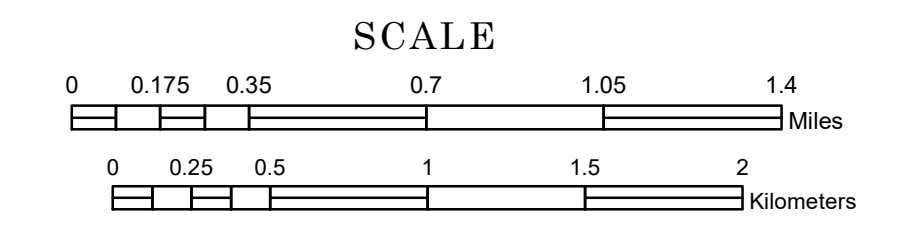


MUNICIPALITY OF SAINT CLOUD

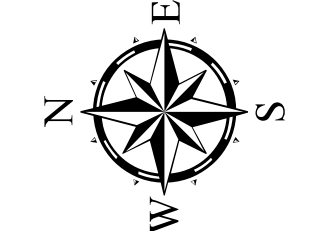
PREPARED BY THE
MINNESOTA DEPARTMENT OF TRANSPORTATION
OFFICE OF TRANSPORTATION SYSTEM MANAGEMENT

IN COOPERATION WITH
U.S. DEPARTMENT OF TRANSPORTATION
FEDERAL HIGHWAY ADMINISTRATION

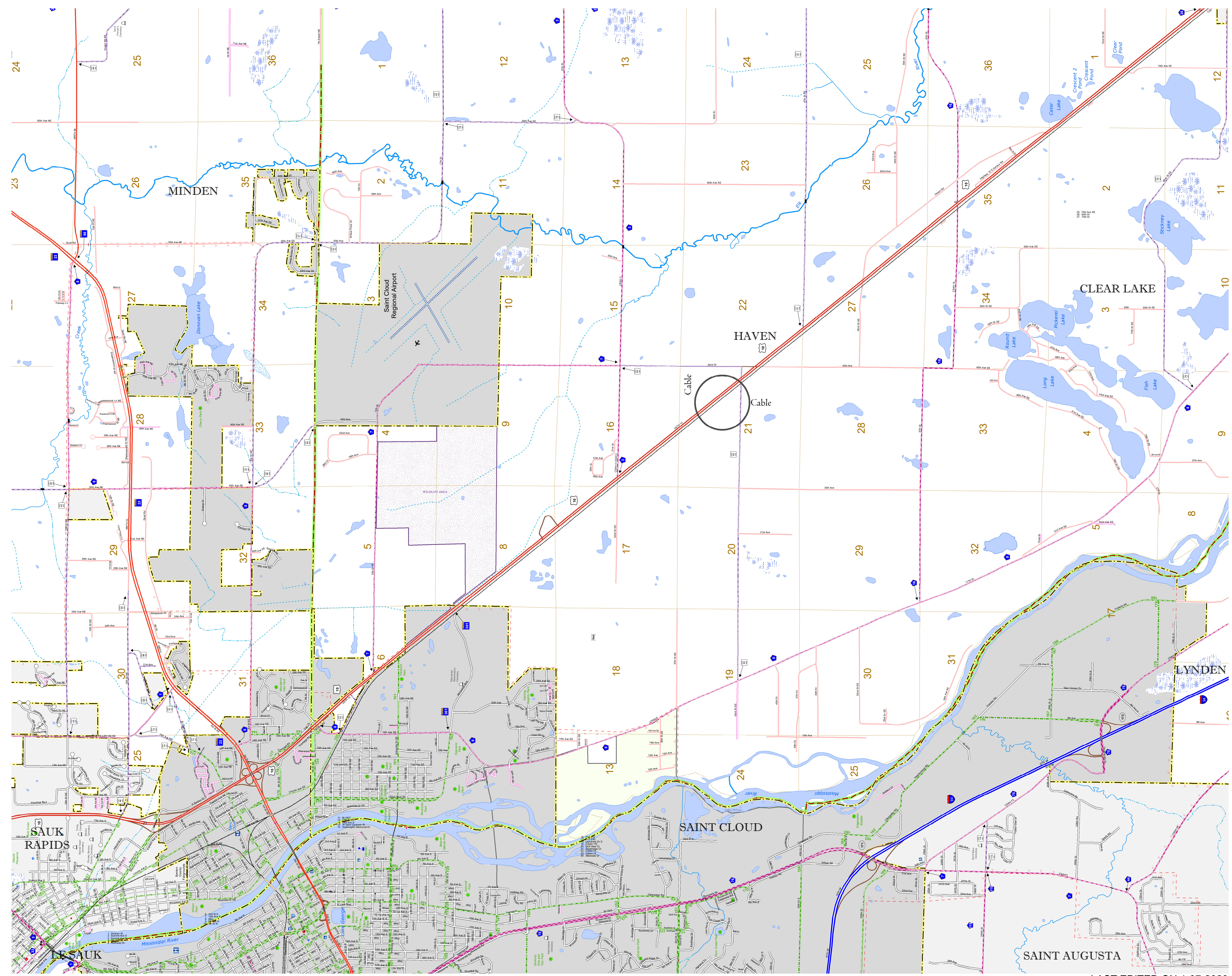


1 in = 2,000 ft
2023

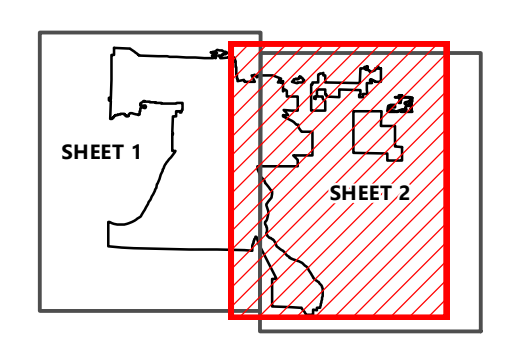
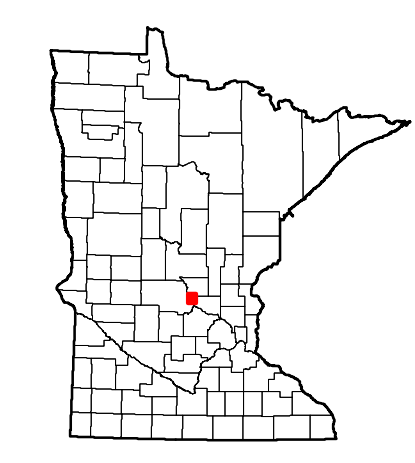
Projection:
Transverse Mercator
NAD 1986
UTM Zone 15



North American Datum
of 1986



ROAD AND ROADWAY FEATURES	PUBLIC SERVICE FEATURES
INTERSTATE	INDOT OFFICE
US HIGHWAY	INDOT TRUCK STATION
STATE HIGHWAY	HIGHWAY PATROL DISTRICT OFFICE
COUNTY STATE AID HIGHWAY	STATE TRAVEL INFORMATION CENTER
COUNTY ROAD	REST AREA (FULL SERVICE)
MUNICIPAL STREET	REST AREA (VALET OR PIU TOLLET)
MUNICIPAL STATE AID STREET	PUBLIC ACCESS POINT
PRIVATE STREET ROAD	LOCAL PARK
TOWNSHIP ROAD	FARMHOUSES
UNORGANIZED TERRITORY ROAD	PORT OF ENTRY
RAMP OR CONNECTOR	PARK AND RIDE LOT
INTERSTATE EXIT	PUBLIC UNIVERSITY COLLEGE
GREAT RIVER ROAD	PRIVATE UNIVERSITY COLLEGE
OTHER ROADS	ELEMENTARY SCHOOL
Facilities	MIDDLE SCHOOL
State Park	HIGH SCHOOL
National	
National Park	
Monument	
National Wildlife State Game	
Military	
RAILROAD AND RAILWAY FEATURES	AVIATION FEATURES
EMPIRE BUILDER STATION (AIR/RAIL)	COMMERCIAL AIRPORT
NORTH STAR STATION (COMMUTER)	GENERAL AIRPORT
LIGHT RAIL	AIRSTRIP
BLUE LINE STATION	SEAPLANE
GREEN LINE STATION	AIRPORT RUNWAY
INFRASTRUCTURE FEATURES	CULTURAL FEATURES
LONGS BRIDGE (100' OR GREATER SPAN)	STATE HISTORICAL MARKER
MAJOR BRIDGE (20' TO 100' SPAN)	HISTORIC DISTRICT
MINOR BRIDGE (5' TO 20' SPAN)	HISTORIC SITE
ROAD TUNNEL (100' OR GREATER SPAN)	MONUMENT
RAILROAD BRIDGE (100' OR GREATER SPAN)	CEMETERY
RAILROAD BRIDGE (MAJOR 100' SPAN)	BOUNDARY FEATURES
SKYWAY	TRIBAL LAND
PEDESTRIAN BRIDGE	COUNTY
PEDESTRIAN TUNNEL	MUNICIPALITY
DAM	ADJACENT MUNICIPALITY
LOCK AND DAM	FEDERAL ADJUSTED URBAN AREA (DAUA)
PUBLIC FACILITIES	MILITARY
STATE CAPITOL	STATE PARK
FEDERAL COURTHOUSE	REGIONAL PARK
CITY HALL	NATIONAL FOREST
COMMUNITY CENTER	NATIONAL AND STATE FOREST
ARENA	STATE FOREST
STADIUM	NATIONAL TRAIL
POST OFFICE	WILDLIFE REFUGE AREA
POLICE STATION	WILDLIFE MANAGEMENT AREA
FIRE STATION	HYDROLOGIC FEATURES
PUBLIC LIBRARY	RIVER OR STREAM (PERMANENT)
EVENT CENTER	LAKE, POND OR RESERVOIR
	STREAM (INTERMITTENT)
	DRAINAGE DITCH
	WETLAND
	ISLAND OR LAND
	REGIONAL WATERSHED
CITY CENTERS	
TRIBAL GOVERNMENT CENTER	
CITY CENTER	
LOCALLY INCORPORATED PLACE	
UNINCORPORATED COMMUNITY	



To request information from this document in an alternative format, call 651-366-4718 or 1-800-657-3774 (Greater Minnesota); 711 or 1-800-627-3529 (Minnesota Relay). You may also send an e-mail to ADarequest.dot@state.mn.us. (Please request at least one week in advance.)

LAST EDITED ON 1-07-2023

Population (U.S. Census 2020): 68,881