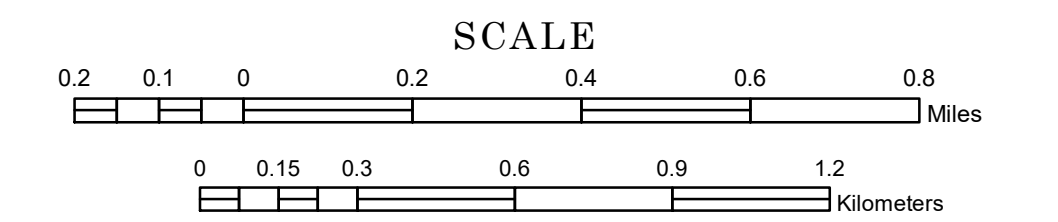


# MUNICIPALITY OF THIEF RIVER FALLS

PREPARED BY THE  
MINNESOTA DEPARTMENT OF TRANSPORTATION  
OFFICE OF TRANSPORTATION SYSTEM MANAGEMENT

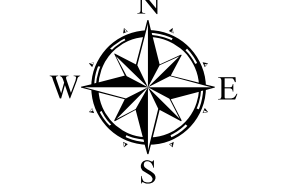
IN COOPERATION WITH  
U.S. DEPARTMENT OF TRANSPORTATION  
FEDERAL HIGHWAY ADMINISTRATION



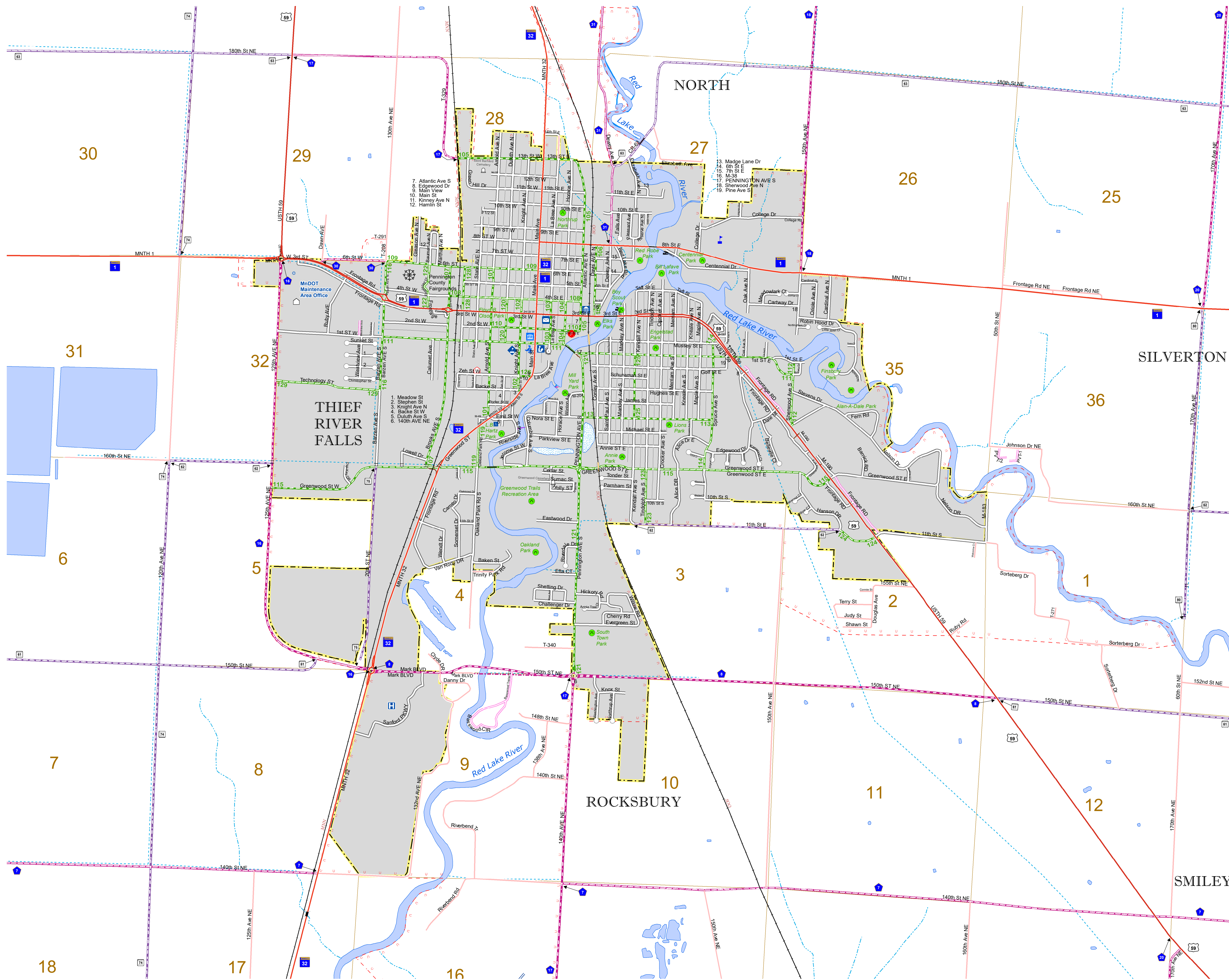
1 in = 1,200 ft

2023

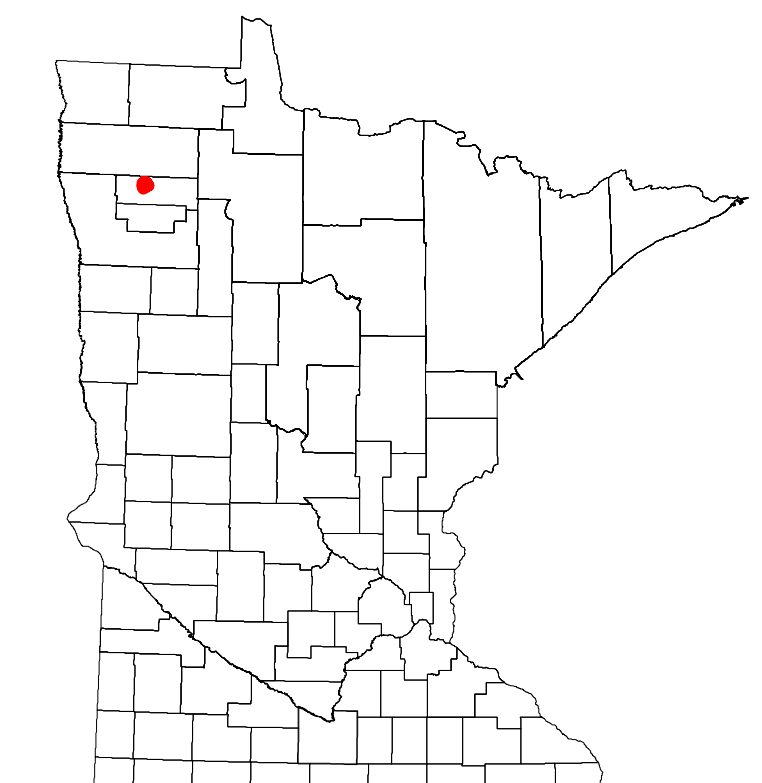
Projection:  
Transverse Mercator  
NAD 1986  
UTM Zone 15



North American Datum  
of 1986



ROAD AND ROADWAY FEATURES	PUBLIC SERVICE FEATURES
INTERSTATE	MNDOT OFFICE
US HIGHWAY	MNDOT TRUCK STATION
MIN HIGHWAY	HIGHWAY PATROL DISTRICT OFFICE
COUNTY STATE AID HIGHWAY	STATE TRAVEL INFORMATION CENTER
COUNTY ROAD	REST AREA (FULL SERVICE)
MUNICIPAL STREET	REST AREA (FAST TRAVEL)
MUNICIPAL STATE AID STREET	WAYSIDE (ONLY ON PVI TRAIL)
TOWNSHIP ROAD	PUBLIC ACCESS POINT
UNORGANIZED TERRITORY ROAD	LOCAL PARK
RAMP OR CONNECTOR	FAIRGROUNDS
INTERSTATE EXIT	PORT OF ENTRY
GREAT RIVER ROAD	PARK AND RIDE LOT
OTHER ROAD	PUBLIC UNIVERSITY COLLEGE
RAILROAD AND RAILWAY FEATURES	PRIVATE UNIVERSITY COLLEGE
EMPIRE BUILDER STATION (AIRPORT)	ELEMENTARY SCHOOL
NORTSTAR STATION (COMMUTER)	MIDDLE SCHOOL
BLUE LINE STATION	HIGH SCHOOL
GREEN LINE STATION	AVIATION FEATURES
LONG BRIDGE (100' OR GREATER SPAN)	COMMERCIAL AIRPORT
MAJOR BRIDGE (20' TO 100' SPAN)	GENERAL AIRPORT
MINOR BRIDGE (20' TO 50' SPAN)	AIRSTRIP
ROAD TUNNEL (100' OR GREATER SPAN)	SEAPLANE
RAILROAD BRIDGE (100' OR GREATER SPAN)	AIRPORT RUNWAY
RAILROAD BRIDGE (LESSER THAN 100' SPAN)	CULTURAL FEATURES
SKYWAY	STATE HISTORIC MARKER
PEDESTRIAN BRIDGE	HISTORIC DISTRICT
PEDESTRIAN TUNNEL	HISTORIC SITE
DAM	MONUMENT
LOCK AND DAM	CEMETERY
PUBLIC FACILITIES	BOUNDARY FEATURES
STATE CAPITOL	TRIBAL LAND
FEDERAL COURTHOUSE	COUNTY
COUNTY COURTHOUSE	MUNICIPALITY
ARMORY	ADJACENT MUNICIPALITY
CITY HALL	FEDERAL ADJUSTED URBAN AREA (2014)
COMMUNITY CENTER	MILITARY
ARENA	STATE PARK
STADIUM	REGIONAL PARK
POST OFFICE	NATIONAL FOREST
POLICE STATION	STATE FOREST
FIRE STATION	NATIONAL TRAIL
PUBLIC LIBRARY	WILDLIFE REFUGE AREA
PUBLIC MUSEUM	WILDLIFE MANAGEMENT AREA
EVENT CENTER	HYDROLOGIC FEATURES
CITY CENTERS	RIVER OR STREAM (PERMANENT)
TRIBAL GOVERNMENT CENTER	LAKE, POND OR RESERVOIR
CITY CENTER	STREAM (PERMANENT)
LOCALLY KNOWN PLACE	WETLAND
UNINCORPORATED COMMUNITY	ISLAND OR LAND
	REGIONAL WATERSHED



To request information from this document in an alternative format, call 651-366-4718 or 1-800-657-3774 (Greater Minnesota); 711 or 1-800-627-3529 (Minnesota Relay). You may also send an e-mail to [ADArequest.dot@state.mn.us](mailto:ADArequest.dot@state.mn.us). (Please request at least one week in advance.)

LAST EDITED ON 12-07-2023

Population (U.S. Census 2020): 8749