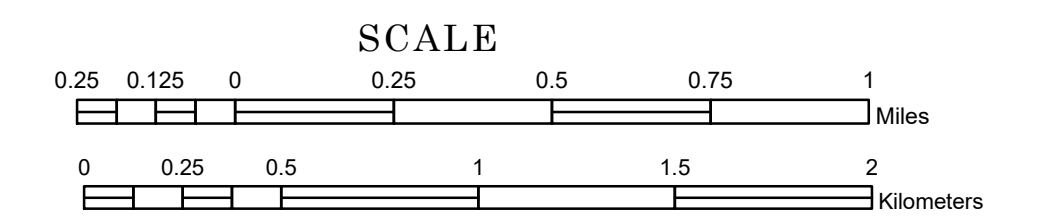


MUNICIPALITY OF CAMBRIDGE

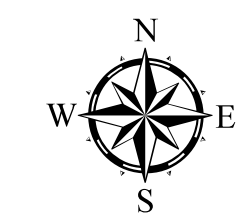
PREPARED BY THE
MINNESOTA DEPARTMENT OF TRANSPORTATION
OFFICE OF TRANSPORTATION SYSTEM MANAGEMENT

IN COOPERATION WITH
U.S. DEPARTMENT OF TRANSPORTATION
FEDERAL HIGHWAY ADMINISTRATION

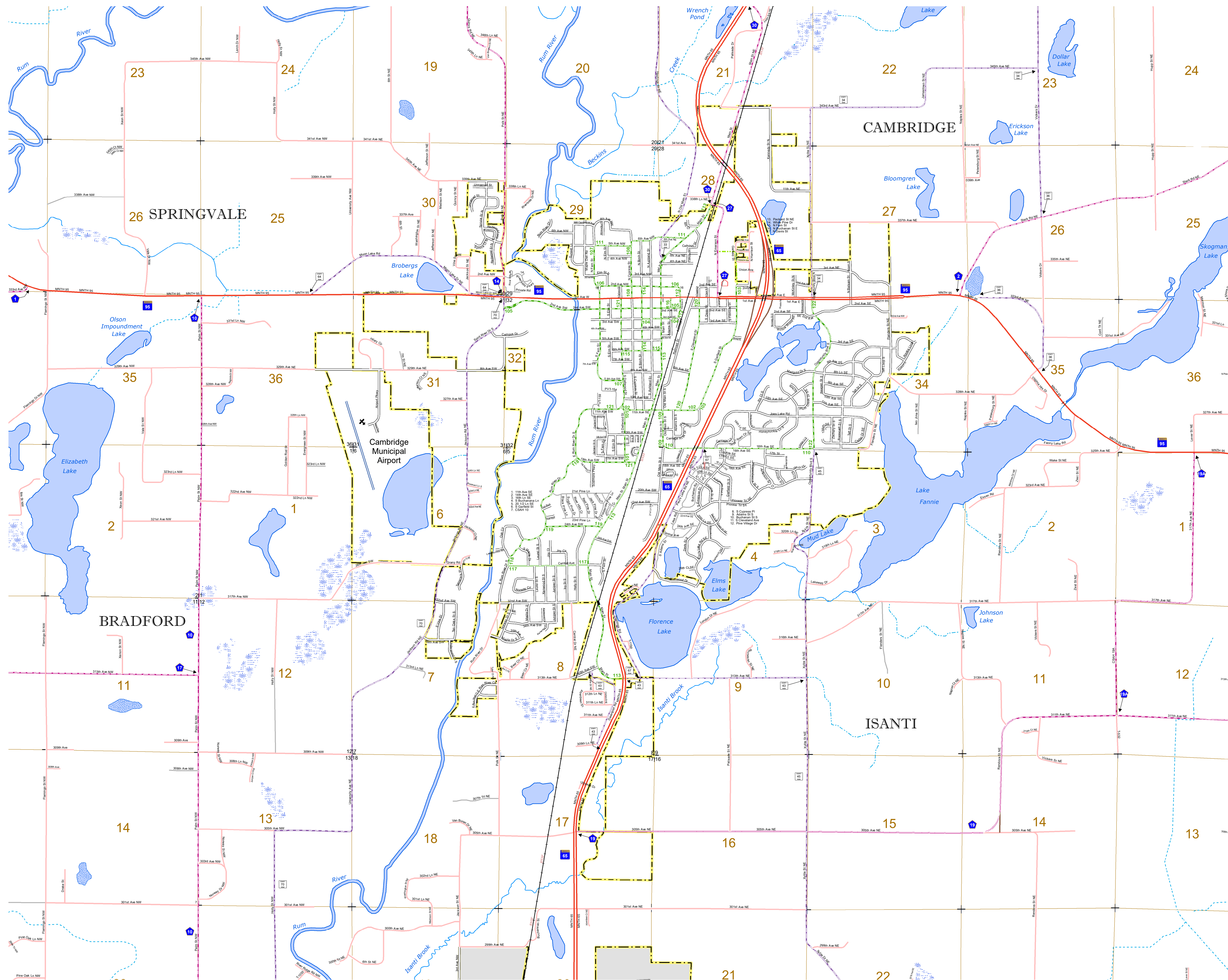


1 in = 1,600 ft
2023

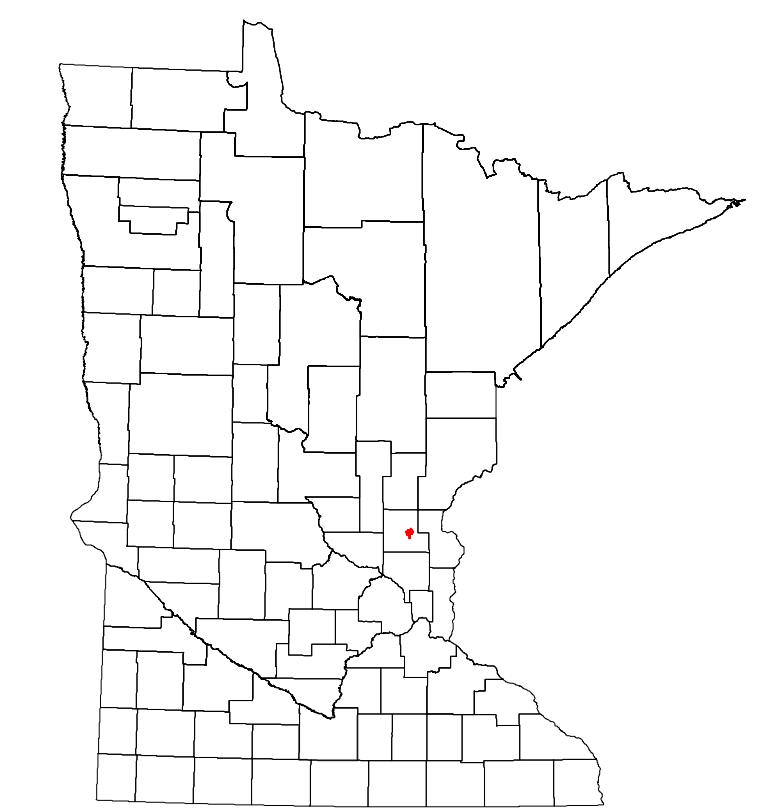
Projection:
Transverse Mercator
NAD 1986
UTM Zone 15



North American Datum
of 1986



| ROAD AND ROADWAY FEATURES | | INFRASTRUCTURE FEATURES | |
|--------------------------------------|--|--|--|
| INTERSTATE | | LONG BRIDGE (100' OR GREATER SPAN) | |
| US HIGHWAY | | MAJOR BRIDGE (20' TO 100' SPAN) | |
| MN HIGHWAY | | MINOR BRIDGE (5' TO 20' SPAN) | |
| COUNTY STATE AID HIGHWAY | | ROAD TUNNEL (100' OR GREATER SPAN) | |
| COUNTY ROAD | | RAILROAD BRIDGE (100' OR GREATER SPAN) | |
| MUNICIPAL STREET | | RAILROAD BRIDGE (Under 100' SPAN) | |
| MUNICIPAL STATE AID STREET | | SKYWAY | |
| PRIVATE STREET/ROAD | | PEDESTRIAN BRIDGE | |
| TOWNSHIP ROAD | | PEDESTRIAN TUNNEL | |
| UNORGANIZED TERRITORY ROAD | | AVIATION FEATURES | |
| RAMP OR CONNECTOR | | COMMERCIAL AIRPORT | |
| GREAT RIVER ROAD | | GENERAL AIRPORT | |
| COUNTY STATE AID HIGHWAY (DNE) | | AIRSTRIP | |
| MUNICIPAL STATE AID STREET (DNE) | | SEAPLANE | |
| TRUNK HIGHWAY FUTURE PROJECTS | | AIRPORT RUNWAY | |
| OTHER ROADS | | HYDROLOGIC FEATURES | |
| FRONTAGE | | RIVER OR STREAM (PERMANENT) | |
| TRAIL SERVICE | | LAKE, POND OR RESERVOIR | |
| MILITARY | | STREAM (INTERMITTENT) | |
| RAILROAD AND RAILWAY FEATURES | | DRAINAGE DITCH | |
| BOUNDARY FEATURES | | WETLAND | |
| COUNTY | | ISLAND OR LAND | |
| MUNICIPALITY | | REGIONAL WATERSHED | |
| | | SECTION CORNER | |
| | | OTHER FEATURES | |
| | | | |



Population (U.S. Census 2020): 9,611

To request information from this document in an alternative format, call 651-366-4718 or 1-800-657-3774 (Greater Minnesota); 711 or 1-800-627-3529 (Minnesota Relay). You may also send an e-mail to ADArequest.dot@state.mn.us. (Please request at least one week in advance.)