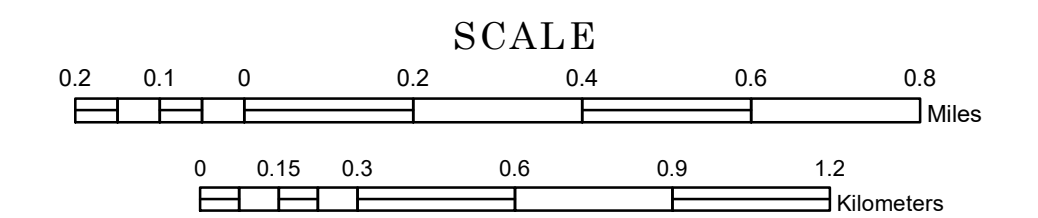


MUNICIPALITY OF REDWOOD FALLS

PREPARED BY THE
MINNESOTA DEPARTMENT OF TRANSPORTATION
OFFICE OF TRANSPORTATION SYSTEM MANAGEMENT

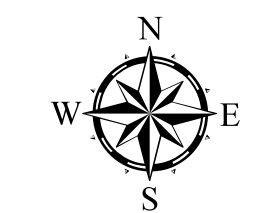
IN COOPERATION WITH
U.S. DEPARTMENT OF TRANSPORTATION
FEDERAL HIGHWAY ADMINISTRATION



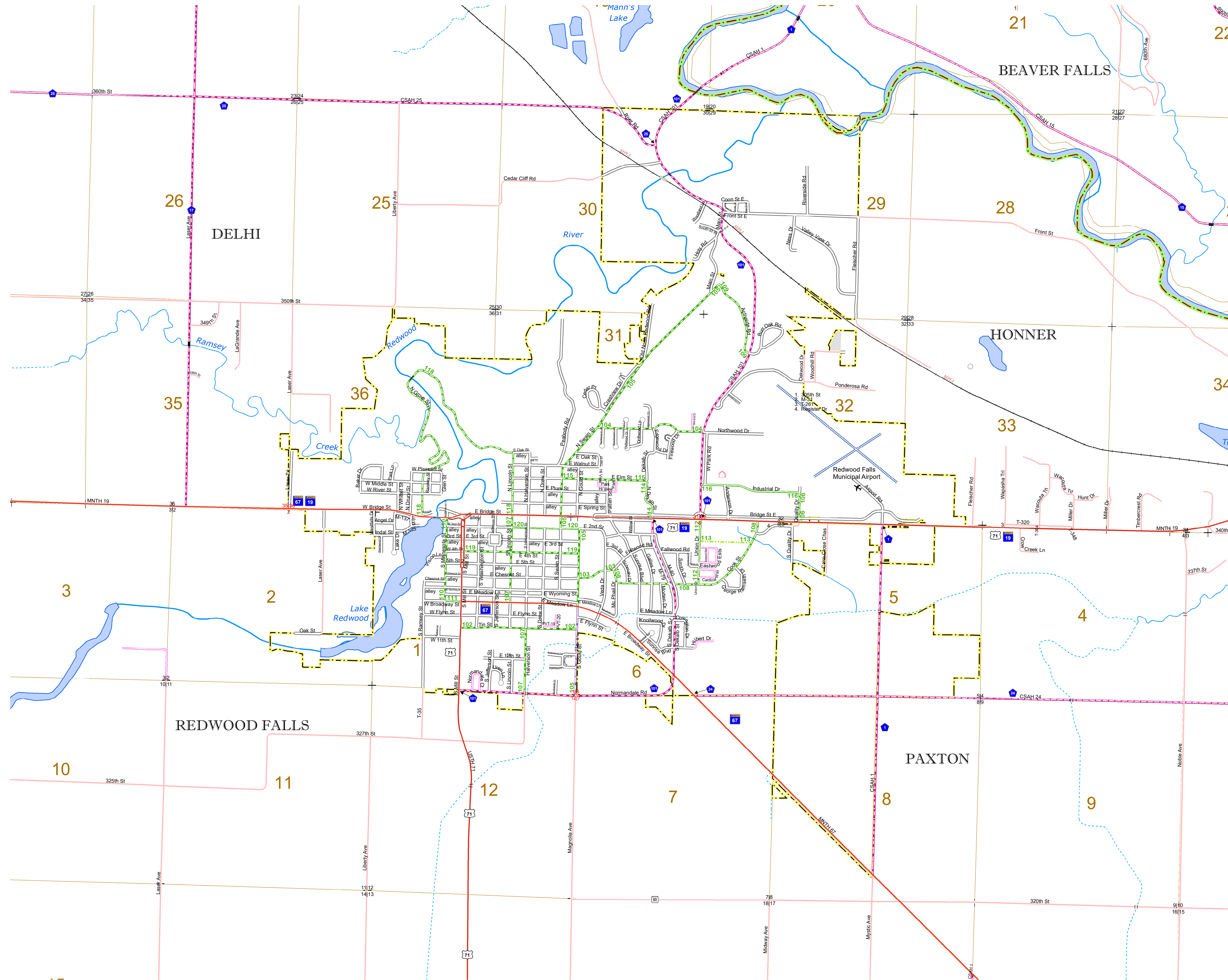
1 in = 1,200 ft

2023

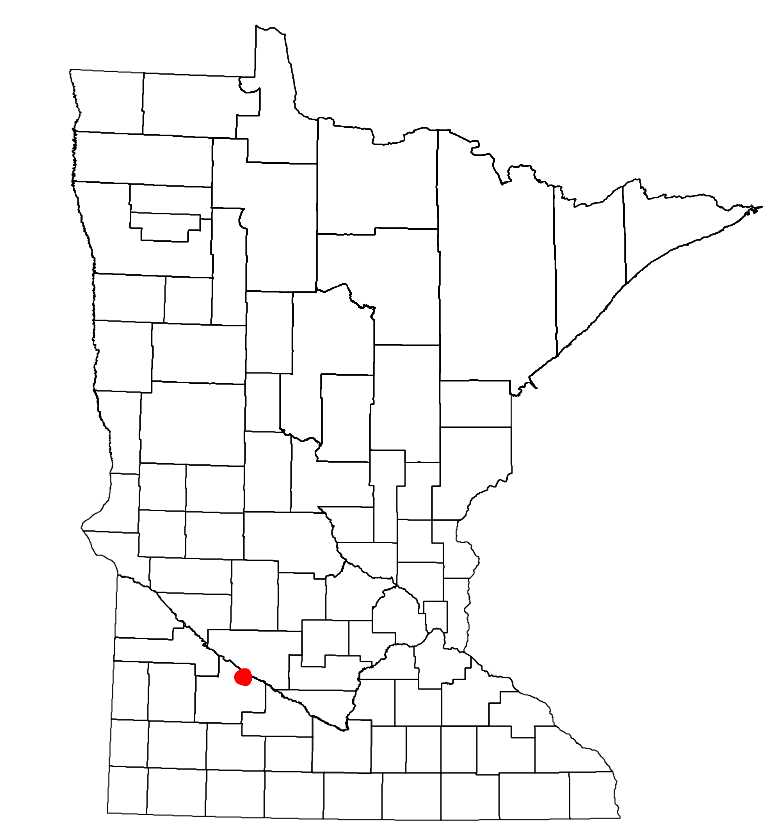
Projection:
Transverse Mercator
NAD 1986
UTM Zone 15



North American Datum
of 1986



ROAD AND ROADWAY FEATURES	INFRASTRUCTURE FEATURES
INTERSTATE	LONG BRIDGE (100' OR GREATER SPAN)
US HIGHWAY	MAJOR BRIDGE (20' TO 100' SPAN)
MN HIGHWAY	MINOR BRIDGE (5' TO 20' SPAN)
COUNTY STATE AID HIGHWAY	ROAD TUNNEL (100' OR GREATER SPAN)
COUNTY ROAD	RAILROAD BRIDGE (100' OR GREATER SPAN)
MUNICIPAL STREET	RAILROAD BRIDGE (UNDER 100' SPAN)
MUNICIPAL STATE AID STREET	SKYWAY
PRIVATE STREET/ROAD	PEDESTRIAN BRIDGE
TOWNSHIP ROAD	PEDESTRIAN TUNNEL
UNORGANIZED TERRITORY ROAD	AVIATION FEATURES
RAMP OR CONNECTOR	COMMERCIAL AIRPORT
GREAT RIVER ROAD	GENERAL AIRPORT
COUNTY STATE AID HIGHWAY (DNE)	AIRSTRIP
MUNICIPAL STATE AID STREET (DNE)	SEAPLANE
TRUNK HIGHWAY FUTURE PROJECTS	AIRPORT RUNWAY
OTHER ROADS	HYDROLOGIC FEATURES
FRONTAGE	RIVER OR STREAM (PERENNIAL)
INDIAN SERVICE	LAKE, POND OR RESERVOIR
NATIONAL	STREAM (INTERMITTENT)
NATIONAL PARK	DRAINAGE DITCH
MONUMENT	WETLAND
STATE FOREST	ISLAND OR LAND
NATIONAL WILDLIFE	REGIONAL WATERSHED
STATE GAME	OTHER FEATURES
RAILROAD AND RAILWAY FEATURES	SECTION CORNER
RAILWAY	
BOUNDARY FEATURES	
COUNTY	
MUNICIPALITY	



Population (U.S. Census 2010): 5254

To request information from this document in an alternative format, call 651-366-4718 or 1-800-657-3774 (Greater Minnesota); 711 or 1-800-627-3529 (Minnesota Relay). You may also send an e-mail to ADAREquest.dot@state.mn.us. (Please request at least one week in advance.)

LAST EDITED ON 4-15-2024