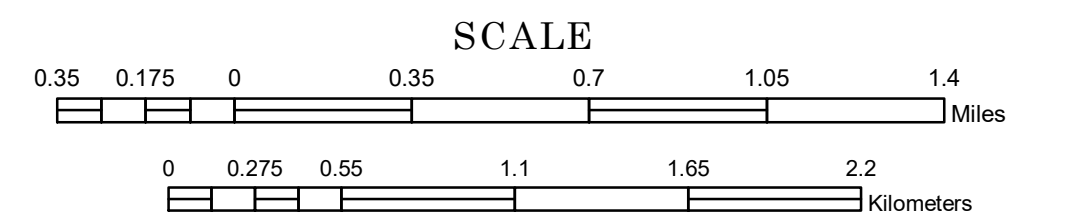


# MUNICIPALITY OF MOORHEAD

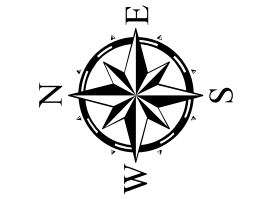
PREPARED BY THE  
MINNESOTA DEPARTMENT OF TRANSPORTATION  
OFFICE OF TRANSPORTATION SYSTEM MANAGEMENT

IN COOPERATION WITH  
U.S. DEPARTMENT OF TRANSPORTATION  
FEDERAL HIGHWAY ADMINISTRATION

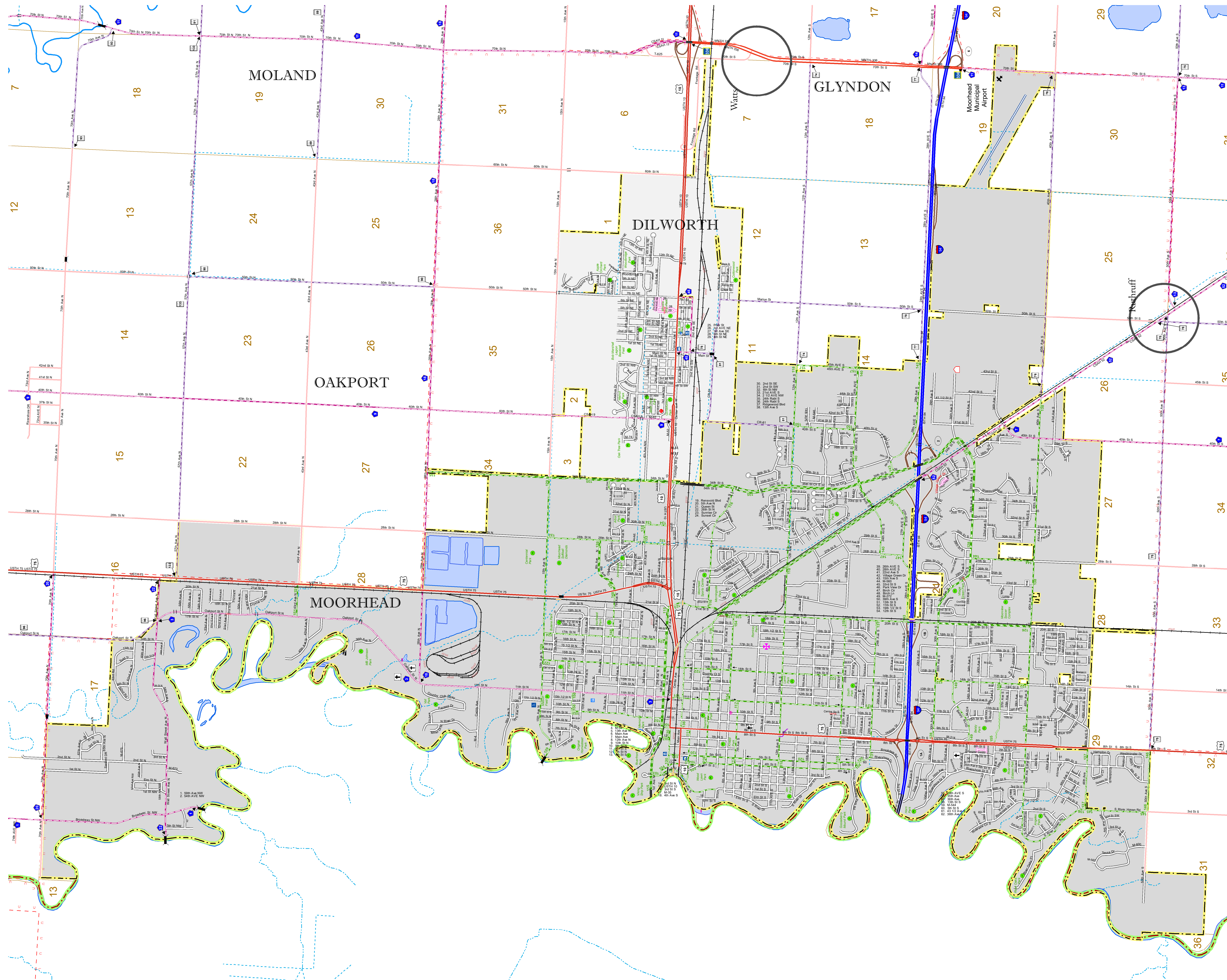


2019

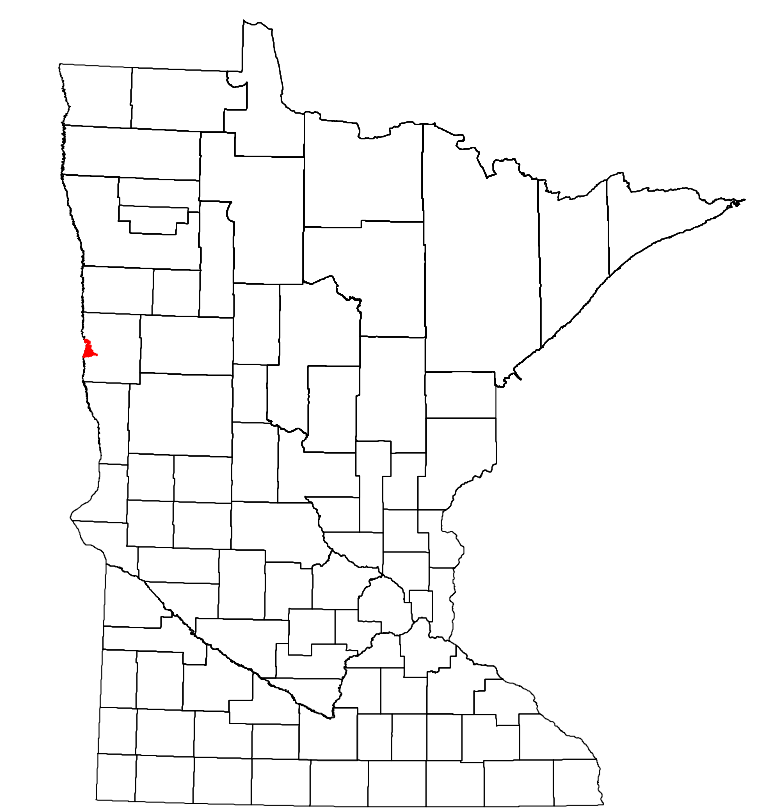
Projection:  
Transverse Mercator  
NAD 1986  
UTM Zone 15



North American Datum  
of 1986



ROAD AND ROADWAY FEATURES		PUBLIC SERVICE FEATURES	
INTERSTATE		MINDOT OFFICE	
US HIGHWAY		MINDOT TRUCK STATION	
MIN HIGHWAY		HIGHWAY PATROL DISTRICT OFFICE	
COUNTY STATE AID HIGHWAY		STATE TRAVEL INFORMATION CENTER	
COUNTY ROAD		REST AREA (FULL SERVICE)	
MUNICIPAL STATE AID STREET		REST AREA (VAULT TOILET)	
MUNICIPAL STREET		WAYSIDE (ONLY OR PVT TOILET)	
PRIVATE STREET/ROAD		LOCAL PARK	
TOWNSHIP ROAD		PUBLIC ACCESS POINT	
UNORGANIZED TERRITORY ROAD		FARMGROUNDS	
RAMP OR CONNECTOR		PORT OF ENTRY	
INTERSTATE EXIT		PARK AND RIDE LOT	
GREAT RIVER ROAD		PUBLIC UNIVERSITY/COLLEGE	
OTHER ROADS		PRIVATE UNIVERSITY/COLLEGE	
FOREST: STATE PARK		CULTURAL FEATURES	
INDIAN SERVICE		HISTORIC DISTRICT	
MILITARY		HISTORIC SITE	
		MONUMENT	
		BOUNDARY FEATURES	
AVIATION FEATURES		TRIBAL LAND	
COMMERCIAL AIRPORT		COUNTY	
GENERAL AIRPORT		MUNICIPALITY	
AIRSTRIP		ADJACENT MUNICIPALITY	
SEAPLANE		FEDERAL ADJUSTED URBAN AREA (2014)	
AIRPORT RUNWAY		MILITARY	
RAILROAD AND RAILWAY FEATURES		VOYAGEURS NATIONAL PARK	
RAILWAY		BOUNDARY WATERS CANOE AREA WILDERNESS	
EMPIRE BUILDER STATION (AMTRAK)		STATE PARK	
NORTHSTAR STATION (COMMUTER)		REGIONAL PARK	
LIGHT RAIL		NATIONAL FOREST	
BLUE LINE		NATIONAL AND STATE FOREST	
GREEN LINE		STATE FOREST	
INFRASTRUCTURE FEATURES		NATIONAL TRAIL	
LONG BRIDGE (100' OR GREATER SPAN)		WILDLIFE REFUGE AREA	
MAJOR BRIDGE (20' TO 100' SPAN)		WILDLIFE MANAGEMENT AREA	
MINOR BRIDGE (5' TO 20' SPAN)		HYDROLOGIC FEATURES	
DAM		RIVER OR STREAM (PERENNIAL)	
LOCK AND DAM		LAKE, POND OR RESERVOIR	
PUBLIC FACILITIES		STREAM (INTERMITTENT)	
STATE CAPITOL		DRAINAGE DITCH	
FEDERAL COURTHOUSE		WETLAND	
COUNTY COURTHOUSE		ISLAND OR LAND	
ARMORY		REGIONAL WATERSHED	
CITY CENTERS			
TRIBAL GOVERNMENT CENTER			
CITY CENTER			
LOCALLY KNOWN PLACE			
UNINCORPORATED COMMUNITY			



Population (U.S. Census 2010): 38065

To request information from this document in an alternative format, call 651-366-4718 or 1-800-657-3774 (Greater Minnesota); 711 or 1-800-627-3529 (Minnesota Relay). You may also send an e-mail to [ADArequest.dot@state.mn.us](mailto:ADArequest.dot@state.mn.us). (Please request at least one week in advance.)