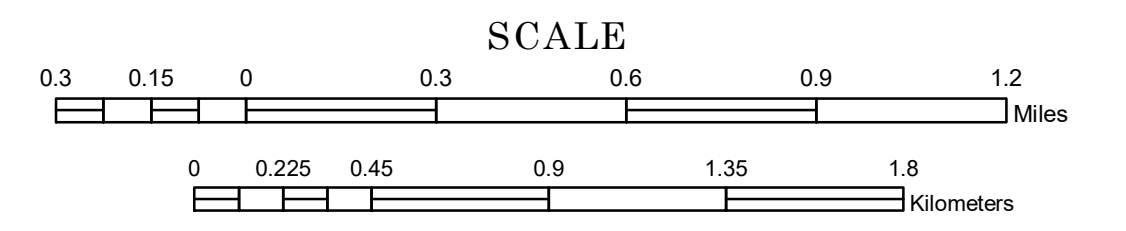


MUNICIPALITY OF OAK GROVE

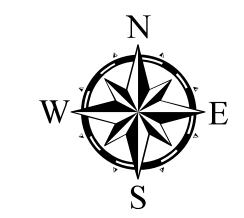
PREPARED BY THE
MINNESOTA DEPARTMENT OF TRANSPORTATION
OFFICE OF TRANSPORTATION SYSTEM MANAGEMENT

IN COOPERATION WITH
U.S. DEPARTMENT OF TRANSPORTATION
FEDERAL HIGHWAY ADMINISTRATION

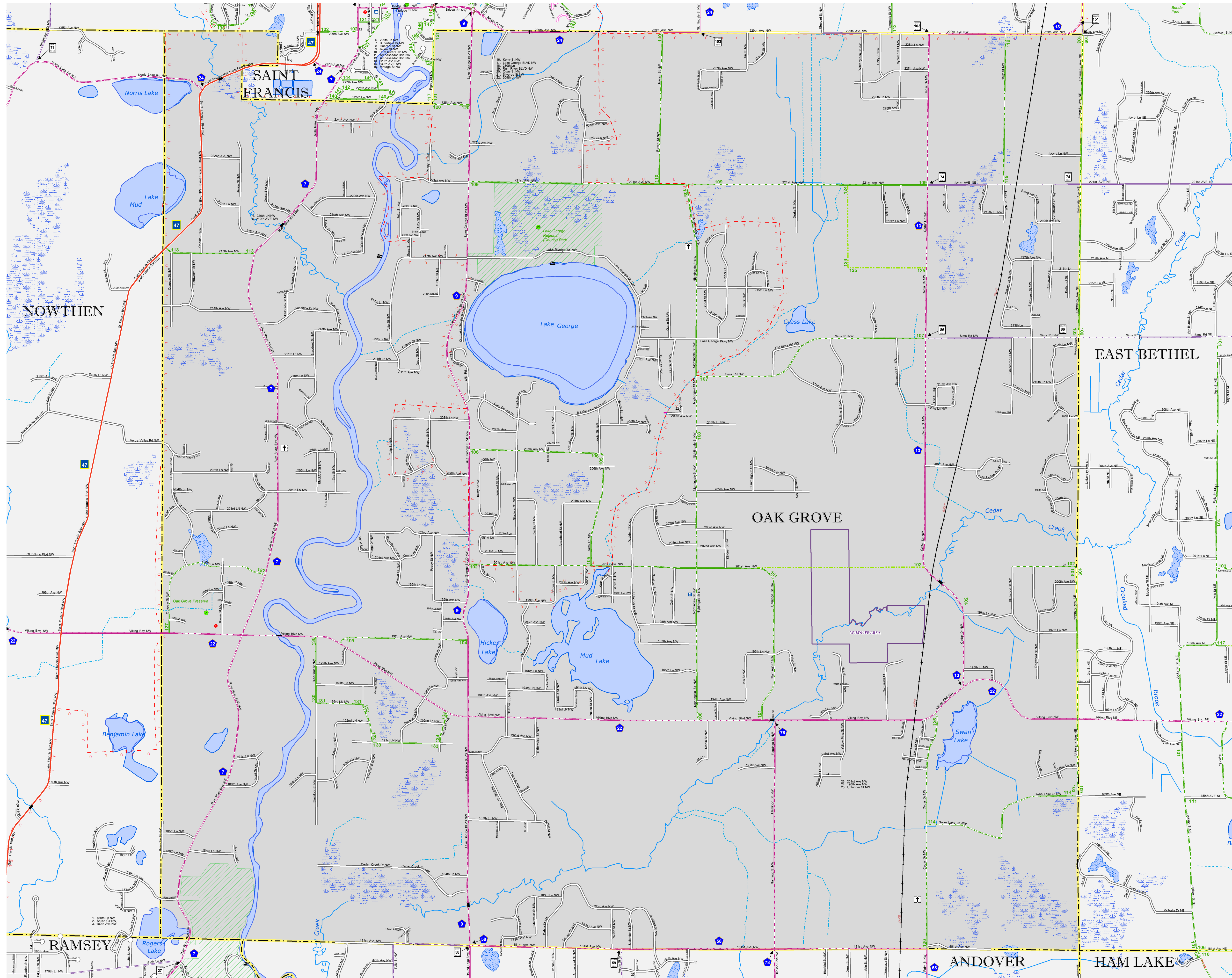


1 in = 1,600 ft
2019

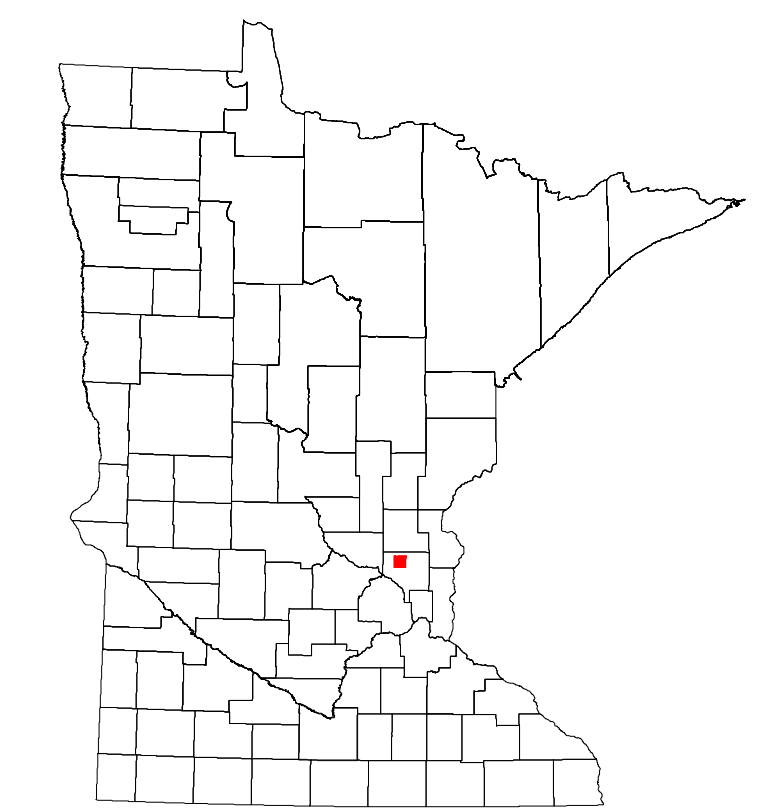
Projection:
Transverse Mercator
NAD 1986
UTM Zone 15



North American Datum
of 1986



ROAD AND ROADWAY FEATURES		PUBLIC SERVICE FEATURES	
INTERSTATE		MINDOT OFFICE	
US HIGHWAY		MINDOT TRUCK STATION	
MN HIGHWAY		HIGHWAY PATROL DISTRICT OFFICE	
COUNTY STATE AID HIGHWAY		STATE TRAVEL INFORMATION CENTER	
COUNTY ROAD		REST AREA (FULL SERVICE)	
MUNICIPAL STATE AID STREET		REST AREA (VAULT TOILET)	
MUNICIPAL STREET		WAYSIDE (DUMP OR PVI TOILET)	
PRIVATE STREET/ROAD		LOCAL PARK	
TOWNSHIP ROAD		PUBLIC ACCESS POINT	
UNORGANIZED TERRITORY ROAD		FARMGROUNDS	
RAMP OR CONNECTOR		PORT OF ENTRY	
INTERSTATE EXIT		PARK AND RIDE LOT	
GREAT RIVER ROAD		PUBLIC UNIVERSITY/COLLEGE	
OTHER ROADS		PRIVATE UNIVERSITY/COLLEGE	
Frontage		State Park	
National Forest		National Monument	
National Wildlife Refuge		State Forest	
Military		State Game	
AVIATION FEATURES		CULTURAL FEATURES	
COMMERCIAL AIRPORT		STATE HISTORICAL MARKER	
GENERAL AIRPORT		HISTORIC DISTRICT	
AIRSTRIP		HISTORIC SITE	
SEAPLANE		MONUMENT	
AIRPORT RUNWAY		BOUNDARY FEATURES	
RAILROAD AND RAILWAY FEATURES		TRIBAL LAND	
RAILWAY		COUNTY	
EMPIRE BUILDER STATION (AMTRAK)		MUNICIPALITY	
NORTHSTAR STATION (COMRAILER)		ADJACENT MUNICIPALITY	
LIGHT RAIL		FEDERAL ADJUSTED URBAN AREA (2014)	
BLUE LINE		MILITARY	
GREEN LINE		VOYAGEURS NATIONAL PARK	
LONG BRIDGE (100' OR GREATER SPAN)		BOUNDARY WATERS CANOE AREA WILDERNESS	
MAJOR BRIDGE (20' TO 100' SPAN)		STATE PARK	
MINOR BRIDGE (5' TO 20' SPAN)		REGIONAL PARK	
DAM		NATIONAL FOREST	
LOCK AND DAM		NATIONAL AND STATE FOREST	
STATE CAPITOL		STATE FOREST	
FEDERAL COURTHOUSE		NATIONAL TRAIL	
COUNTY COURTHOUSE		WILDLIFE REFUGE AREA	
ARMORY		WILDLIFE MANAGEMENT AREA	
CITY CENTERS		HYDROLOGIC FEATURES	
TRIBAL GOVERNMENT CENTER		RIVER OR STREAM (PERMANENT)	
CITY CENTER		LAKE, POND OR RESERVOIR	
LOCALLY KNOWN PLACE		STREAM (INTERMITTENT)	
UNINCORPORATED COMMUNITY		DRAINAGE DITCH	
ISLAND OR LAND		WETLAND	
REGIONAL WATERSHED			



Population (U.S. Census 2010): 8031

To request information from this document in an alternative format, call 651-366-4718 or 1-800-657-3774 (Greater Minnesota); 711 or 1-800-627-3529 (Minnesota Relay). You may also send an e-mail to ADRequest.dot@state.mn.us. (Please request at least one week in advance.)