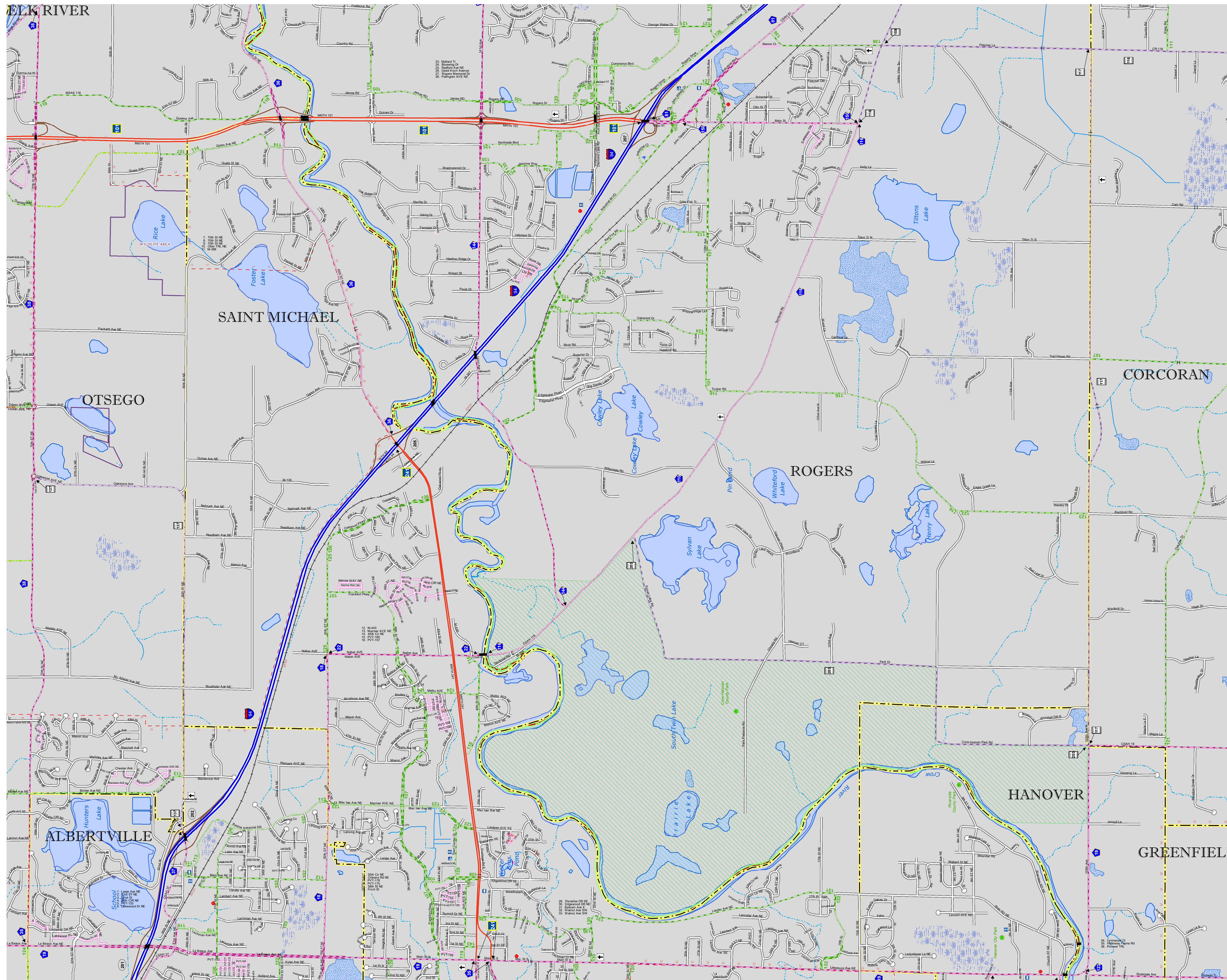




ELK RIVER

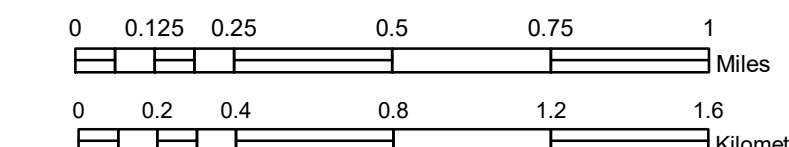


# MUNICIPALITY OF SAINT MICHAEL

PREPARED BY THE  
MINNESOTA DEPARTMENT OF TRANSPORTATION  
OFFICE OF TRANSPORTATION SYSTEM MANAGEMENT

IN COOPERATION WITH  
U.S. DEPARTMENT OF TRANSPORTATION  
FEDERAL HIGHWAY ADMINISTRATION

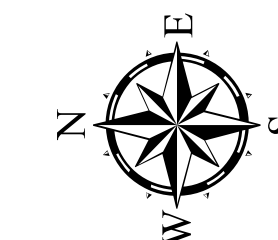
SCALE



1 in = 1,600 ft

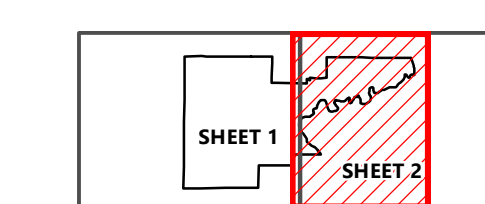
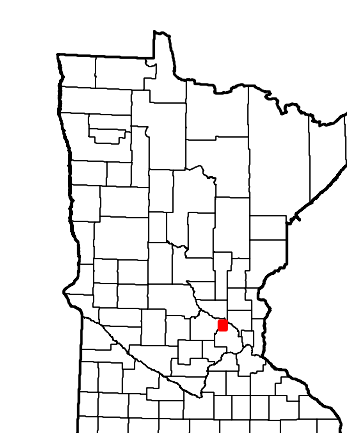
2019

Projection:  
Transverse Mercator  
NAD 1986  
UTM Zone 15



North American Datum  
of 1986

| ROAD AND ROADWAY FEATURES          | PUBLIC SERVICE FEATURES                        |
|------------------------------------|--|
| INTERSTATE                         | MINDOT OFFICE                                  |
| US HIGHWAY                         | MINDOT TRUCK STATION                           |
| MN HIGHWAY                         | HIGHWAY PATROL DISTRICT OFFICE                 |
| COUNTY STATE AID HIGHWAY           | STATE TRAVEL INFORMATION CENTER                |
| COUNTY ROAD                        | REST AREA (FULL SERVICE)                       |
| MUNICIPAL STATE AID STREET         | REST AREA (VAULT TOILET)                       |
| MUNICIPAL STREET                   | WAYSIDE (VAULT OR PIT TOILET)                  |
| PRIVATE STREET/ROAD                | LOCAL PARK                                     |
| TOWNSHIP ROAD                      | PUBLIC ACCESS POINT                            |
| UNORGANIZED TERRITORY ROAD         | FAIRGROUNDS                                    |
| RAMP OR CONNECTOR                  | PORT OF ENTRY                                  |
| INTERSTATE EXIT                    | PARK AND RIDE LOT                              |
| GREAT RIVER ROAD                   | MN STATE COLLEGE AND UNIVERSITY SYSTEM (MNSCU) |
| OTHER ROADS                        | UNIVERSITY OF MN SYSTEM                        |
| FRONTAGE                           | CULTURAL FEATURES                              |
| INDIAN SERVICE                     | STATE HISTORICAL MARKER                        |
| NATIONAL PARK                      | HISTORIC DISTRICT                              |
| NATIONAL FOREST                    | HISTORIC SITE                                  |
| NATIONAL WILDLIFE                  | MONUMENT                                       |
| STATE FOREST                       | BOUNDARY FEATURES                              |
| STATE GAME                         | TRIBAL LAND                                    |
| AVIATION FEATURES                  | COUNTY   |
| COMMERCIAL AIRPORT                 | MUNICIPALITY                                   |
| GENERAL AIRPORT                    | ADJACENT MUNICIPALITY                          |
| AIRSTRIP                           | FEDERAL ADJUSTED URBAN AREA (2014)             |
| SEAPLANE                           | MILITARY                                       |
| AIRPORT RUNWAY                     | VOYAGEURS NATIONAL PARK                        |
| RAILROAD AND RAILWAY FEATURES      | BOUNDARY WATERS CANOE AREA WILDERNESS          |
| EMPIRE BUILDER STATION (AMTRAK)    | STATE PARK                                     |
| NORTHSTAR STATION (COMMUTER)       | REGIONAL PARK                                  |
| LIGHT RAIL                         | NATIONAL FOREST                                |
| BLUE LINE                          | NATIONAL AND STATE FOREST                      |
| GREEN LINE                         | STATE FOREST                                   |
| INFRASTRUCTURE FEATURES            | NATIONAL TRAIL                                 |
| LONG BRIDGE (300' OR GREATER SPAN) | WILDLIFE REFUGE AREA                           |
| MAJOR BRIDGE (25' TO 300' SPAN)    | WILDLIFE MANAGEMENT AREA                       |
| MINOR BRIDGE (8' TO 25' SPAN)      | HYDROLOGIC FEATURES                            |
| DAM                                | RIVER OR STREAM (PERMANENT)                    |
| LOCK AND DAM                       | LAKE, POND OR RESERVOIR                        |
| STATE CAPITOL                      | STREAM (INTERMITTENT)                          |
| FEDERAL COURTHOUSE                 | DRAINAGE DITCH                                 |
| COUNTY COURTHOUSE                  | WETLAND  |
| ARMORY                             | ISLAND OR LAND                                 |
| CITY CENTERS                       | REGIONAL WATERSHED                             |
| TRIBAL GOVERNMENT CENTER           |  |
| CITY CENTER                        |  |
| LOCALLY INCORPORATED PLACE         |  |
| UNINCORPORATED COMMUNITY           |  |



To request information from this document in an alternative format, call 651-366-4718 or 1-800-657-3774 (Greater Minnesota); 711 or 1-800-627-3529 (Minnesota Relay). You may also send an e-mail to [ADArequest.dot@state.mn.us](mailto:ADArequest.dot@state.mn.us). (Please request at least one week in advance.)

Population (U.S. Census 2010): 16,399