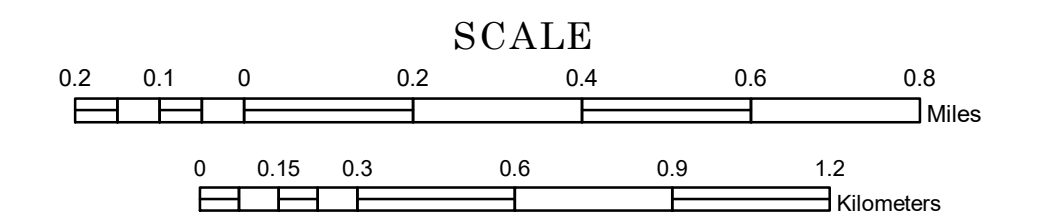


# MUNICIPALITY OF THIEF RIVER FALLS

PREPARED BY THE  
MINNESOTA DEPARTMENT OF TRANSPORTATION  
OFFICE OF TRANSPORTATION SYSTEM MANAGEMENT

IN COOPERATION WITH  
U.S. DEPARTMENT OF TRANSPORTATION  
FEDERAL HIGHWAY ADMINISTRATION

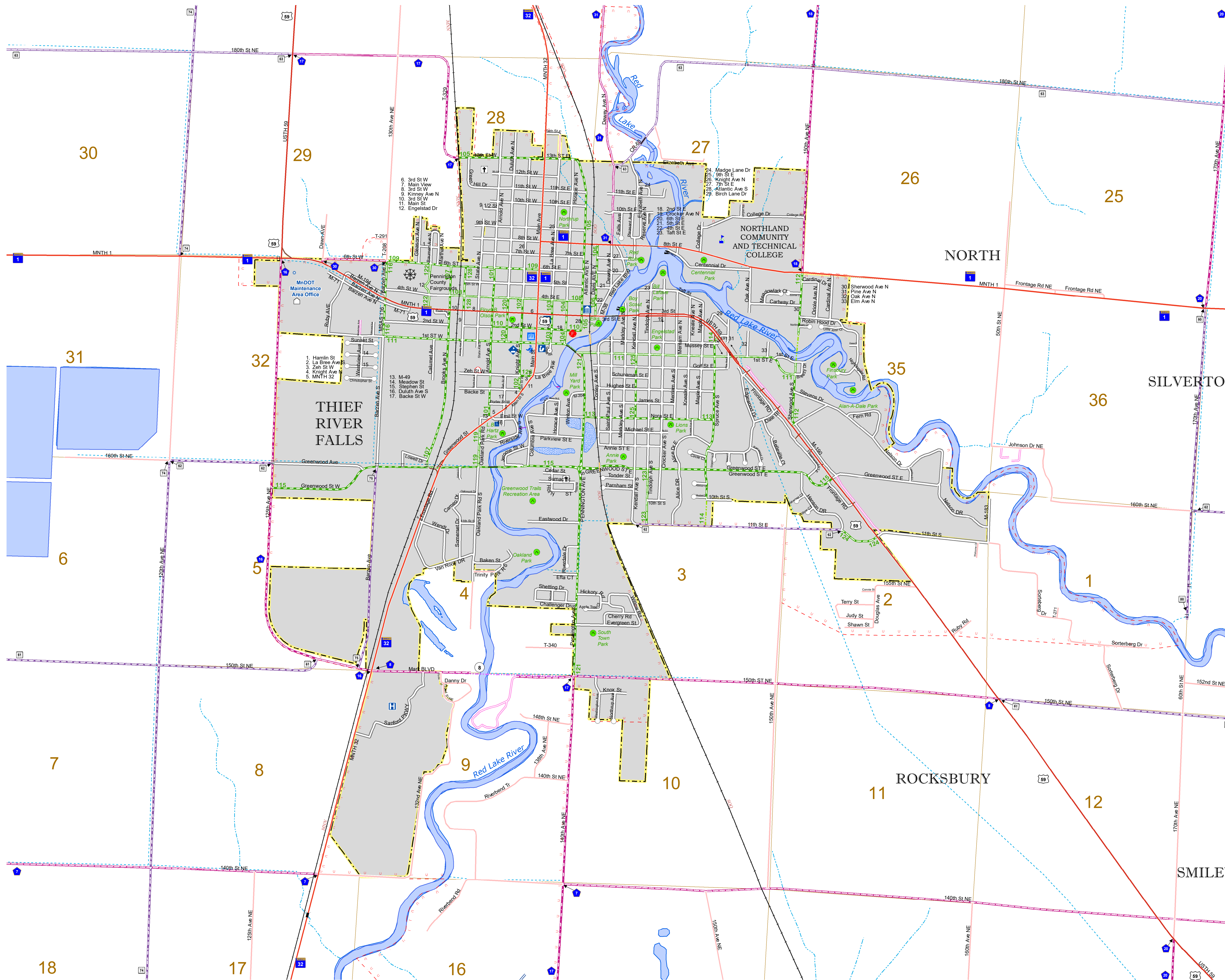


1 in = 1,200 ft  
**2020**

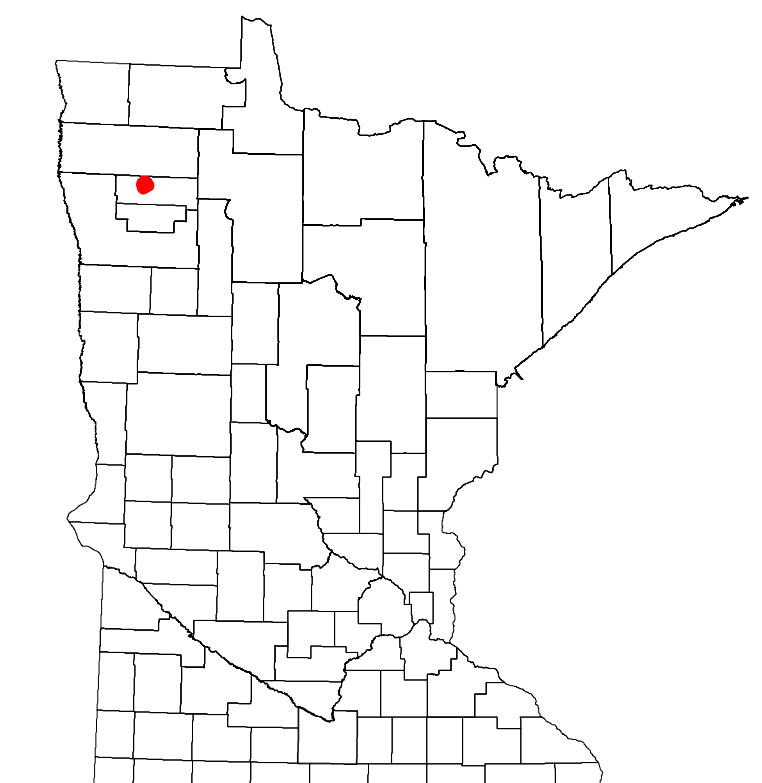
Projection:  
Transverse Mercator  
NAD 1986  
UTM Zone 15



North American Datum  
of 1986



ROAD AND ROADWAY FEATURES	PUBLIC SERVICE FEATURES
INTERSTATE	MNDOT OFFICE
US HIGHWAY	MNDOT TRUCK STATION
MN HIGHWAY	HIGHWAY PATROL DISTRICT OFFICE
COUNTY STATE AID HIGHWAY	STATE TRAVEL INFORMATION CENTER
COUNTY ROAD	REST AREA (FULL SERVICE)
MUNICIPAL STATE AID STREET	REST AREA (VALET TOILET)
MUNICIPAL STREET	WAYSIDE (VALET OR PIT TOILET)
PRIVATE STREET/ROAD	LOCAL PARK
TOWNSHIP ROAD	PUBLIC ACCESS POINT
UNORGANIZED TERRITORY ROAD	FAIRGROUNDS
RAMP OR CONNECTOR	PORT OF ENTRY
INTERSTATE EXIT	PARK AND RIDE LOT
GREAT RIVER ROAD	PUBLIC UNIVERSITY/COLLEGE
OTHER ROADS	PRIVATE UNIVERSITY/COLLEGE
FRONTAGE	STATE HISTORICAL MONUMENT
INDUSTRIAL PARK	CULTURAL FEATURES
NATIONAL FOREST	HISTORIC DISTRICT
STATE FOREST	HISTORIC SITE
MILITARY	MONUMENT
ADJACENT MUNICIPALITY	BOUNDARY FEATURES
TRIBAL LAND	COUNTY
MUNICIPALITY	FEDERAL ADJUSTED URBAN AREA (2014)
ADJACENT MUNICIPALITY	MILITARY
VOYAGEURS NATIONAL PARK	BOUNDARY WATERS CANOE AREA WILDERNESS
STATE PARK	STATE PARK
REGIONAL PARK	REGIONAL PARK
NATIONAL FOREST	NATIONAL FOREST
NATIONAL AND STATE FOREST	NATIONAL FOREST
STATE FOREST	NATIONAL TRAIL
WILDLIFE REFUGIA AREA	WILDLIFE REFUGIA AREA
WILDLIFE MANAGEMENT AREA	HYDROLOGIC FEATURES
RIVER OR STREAM (PERMANENT)	LAKE, POND OR RESERVOIR
LAKE, POND OR RESERVOIR	STREAM (INTERMITTENT)
STREAM (INTERMITTENT)	DRAINAGE DITCH
WETLAND	WETLAND
ISLAND OR LAND	ISLAND OR LAND
REGIONAL WATERSHED	REGIONAL WATERSHED



Population (U.S. Census 2010): 8573

To request information from this document in an alternative format, call 651-366-4718 or 1-800-657-3774 (Greater Minnesota); 711 or 1-800-627-3529 (Minnesota Relay). You may also send an e-mail to ADRequest.dot@state.mn.us. (Please request at least one week in advance.)

LAST EDITED ON 2-25-2020