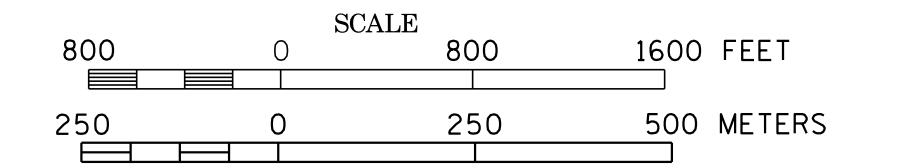
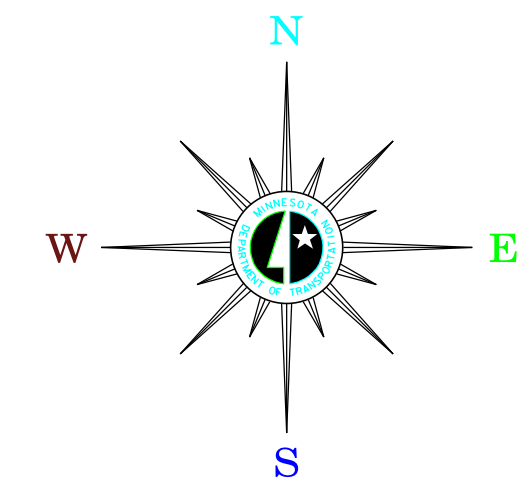


MUNICIPALITIES OF
CARVER CO.

PREPARED BY THE
MINNESOTA DEPARTMENT OF TRANSPORTATION
OFFICE OF TRANSPORTATION SYSTEM MANAGEMENT
IN COOPERATION WITH
U.S. DEPARTMENT OF TRANSPORTATION
FEDERAL HIGHWAY ADMINISTRATION



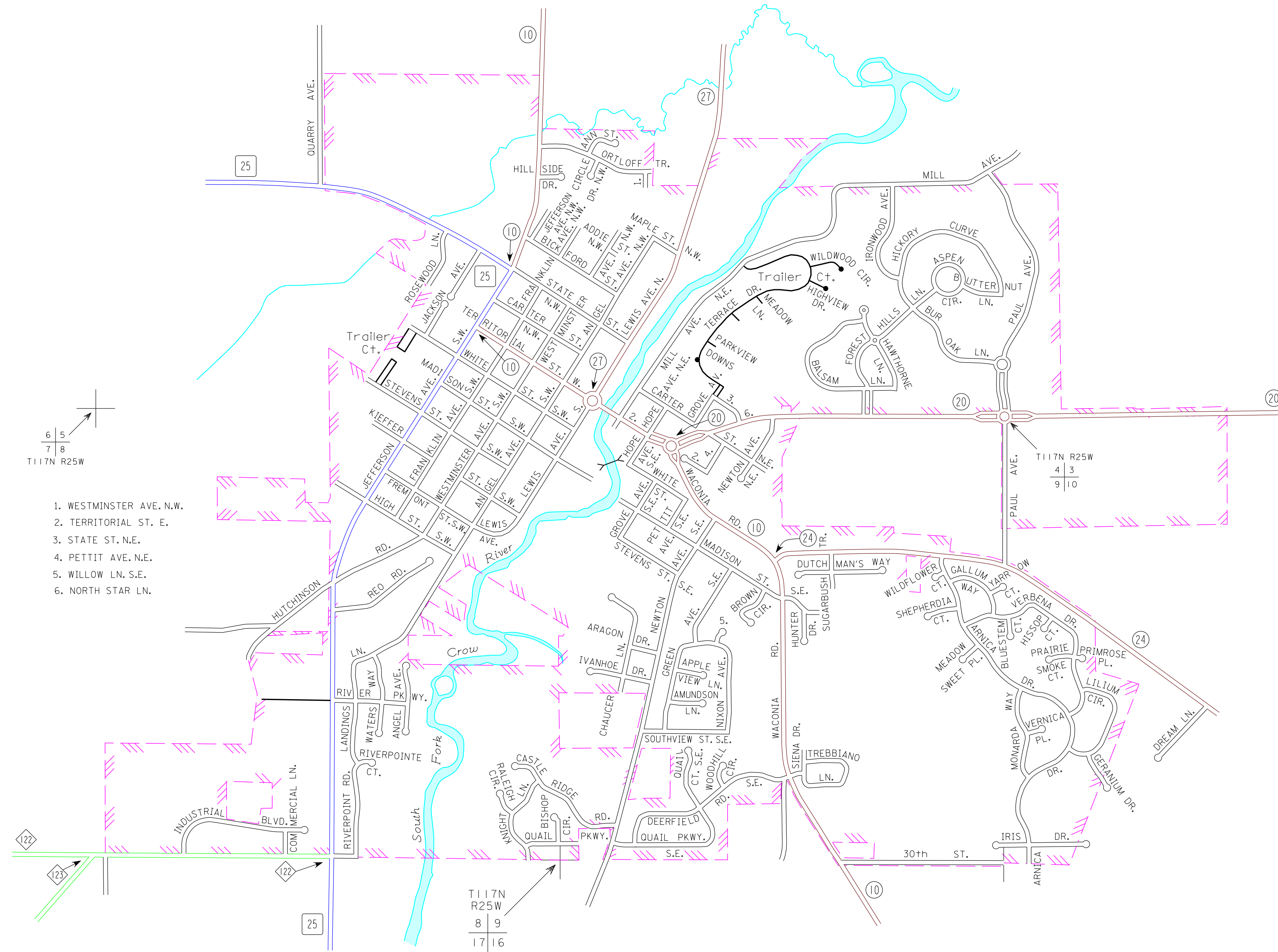
2015
BASIC DATA - 2013



LEGEND

- INTERSTATE TRUNK HIGHWAY..... (35)
- U.S. TRUNK HIGHWAY..... (10)
- STATE TRUNK HIGHWAY..... (55)
- COUNTY STATE AID HIGHWAY..... (23)
- COUNTY ROAD..... (15)
- PUBLIC ROAD
- PRIVATE ROAD
- CORPORATE LIMITS.....

WATERTOWN
CARVER COUNTY
POP. 4,205



6 5
7 8
T117N R25W

1. WESTMINSTER AVE. N.W.
2. TERRITORIAL ST. E.
3. STATE ST. N.E.
4. PETTIT AVE. N.E.
5. WILLOW LN. S.E.
6. NORTH STAR LN.

T117N
R25W
8 9
17 16

MUNICIPALITIES SHOWN
ON THIS SHEET
WATERTOWN

To request information from this document in an alternative format, call 651-366-4718 or 1-800-657-3774 (Greater Minnesota); 711 or 1-800-627-3529 (Minnesota Relay). You may also send an e-mail to ADRequest.dor@state.mn.us. (Please request at least one week in advance).

NOTE: 2010 U.S. CENSUS FIGURES SHOWN FOR ALL MUNICIPALITIES UNLESS OTHERWISE STATED.