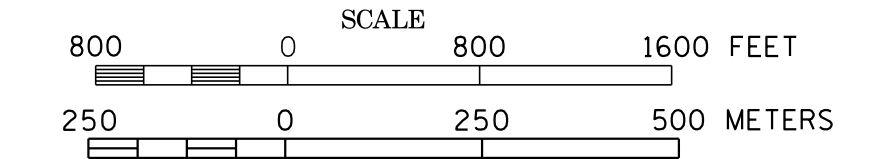
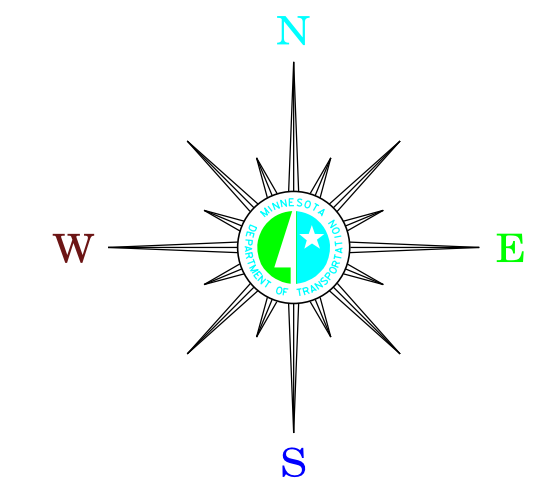


MUNICIPALITIES OF CHIPPEWA CO.

PREPARED BY THE
MINNESOTA DEPARTMENT OF TRANSPORTATION
OFFICE OF TRANSPORTATION SYSTEM MANAGEMENT
IN COOPERATION WITH
U.S. DEPARTMENT OF TRANSPORTATION
FEDERAL HIGHWAY ADMINISTRATION



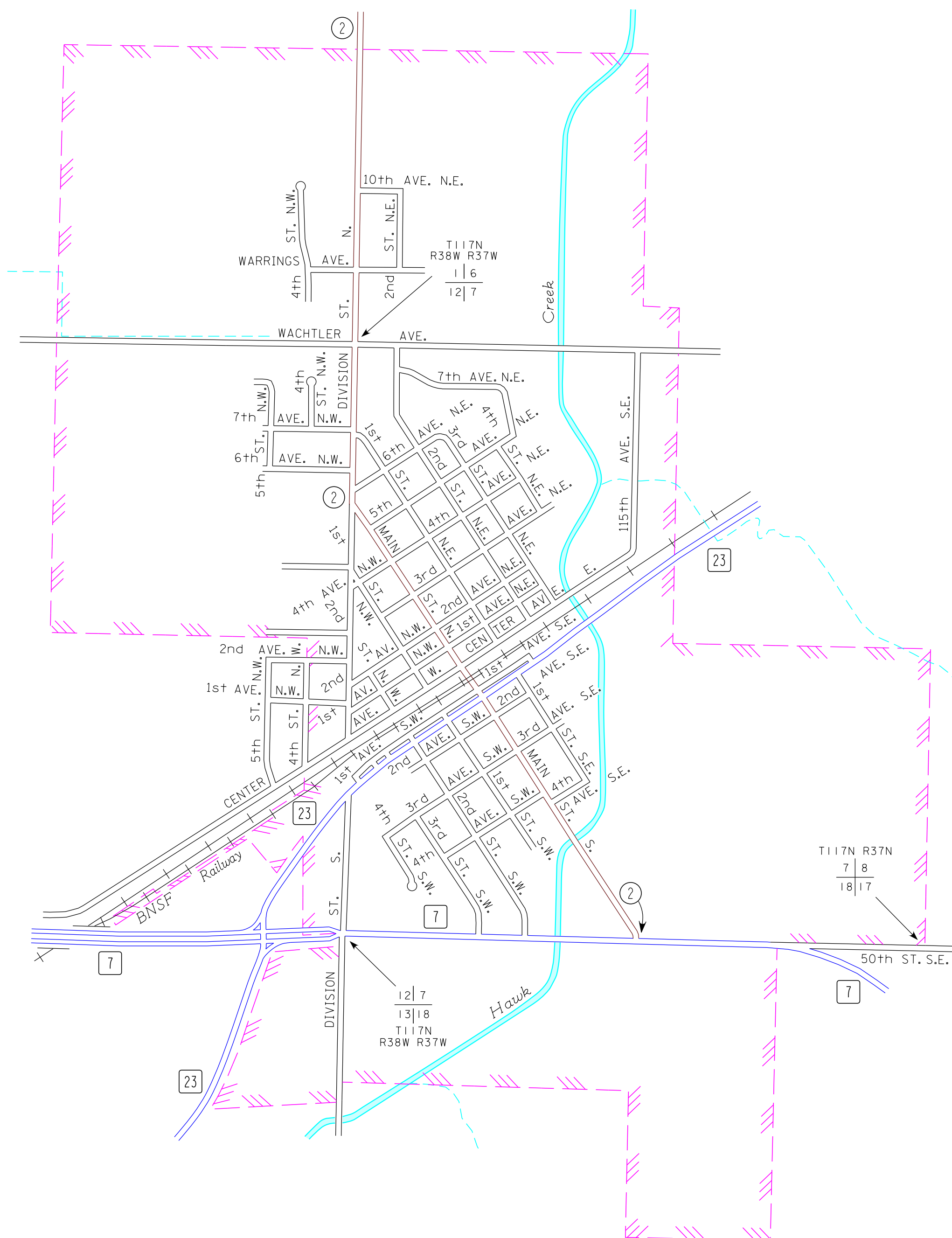
2015
BASIC DATA - 2010



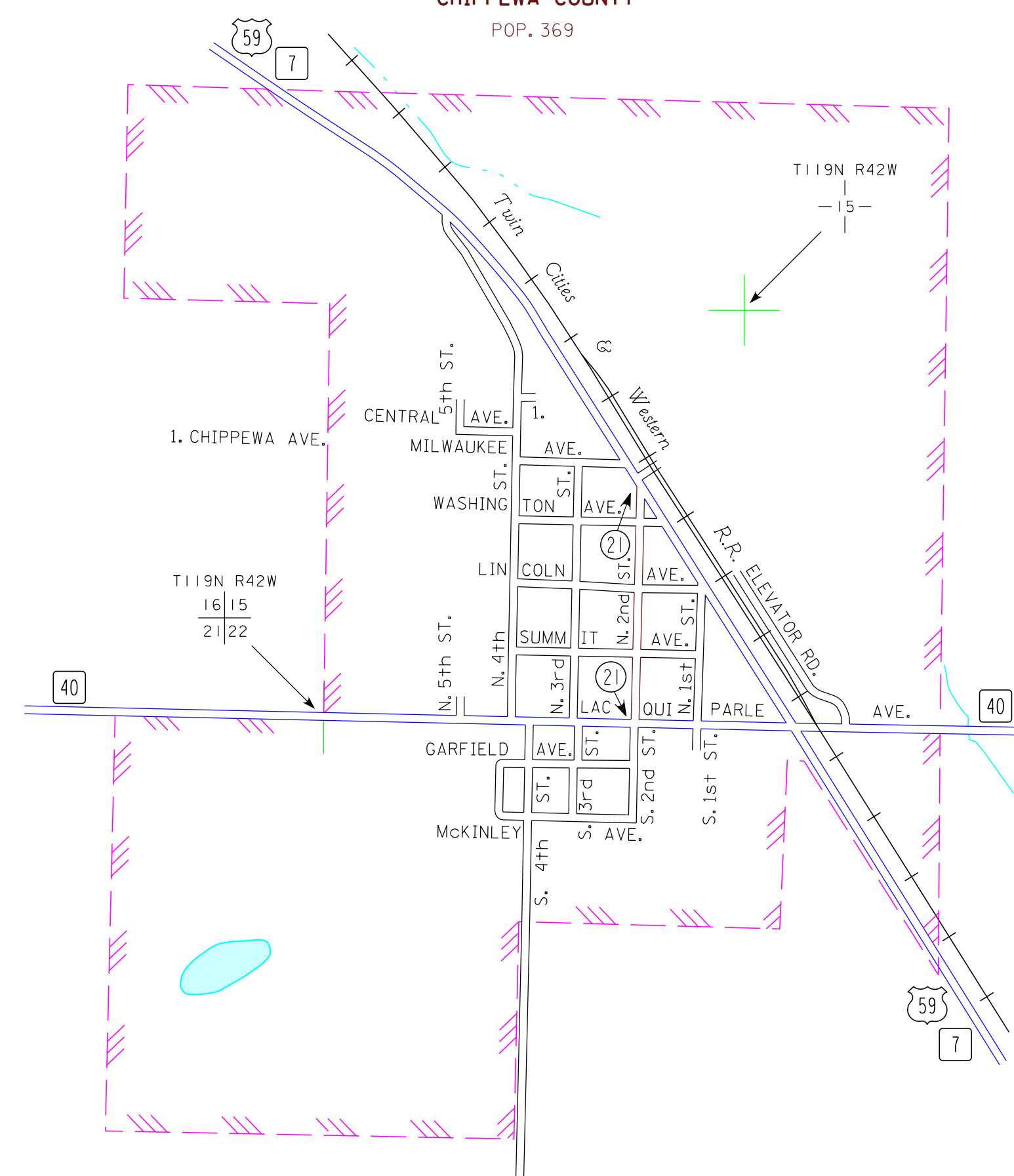
LEGEND

- INTERSTATE TRUNK HIGHWAY..... (I-95)
- U. S. TRUNK HIGHWAY..... (168)
- STATE TRUNK HIGHWAY..... (55)
- COUNTY STATE AID HIGHWAY..... (23)
- COUNTY ROAD..... (19)
- PUBLIC ROAD
- PRIVATE ROAD
- CORPORATE LIMITS.....

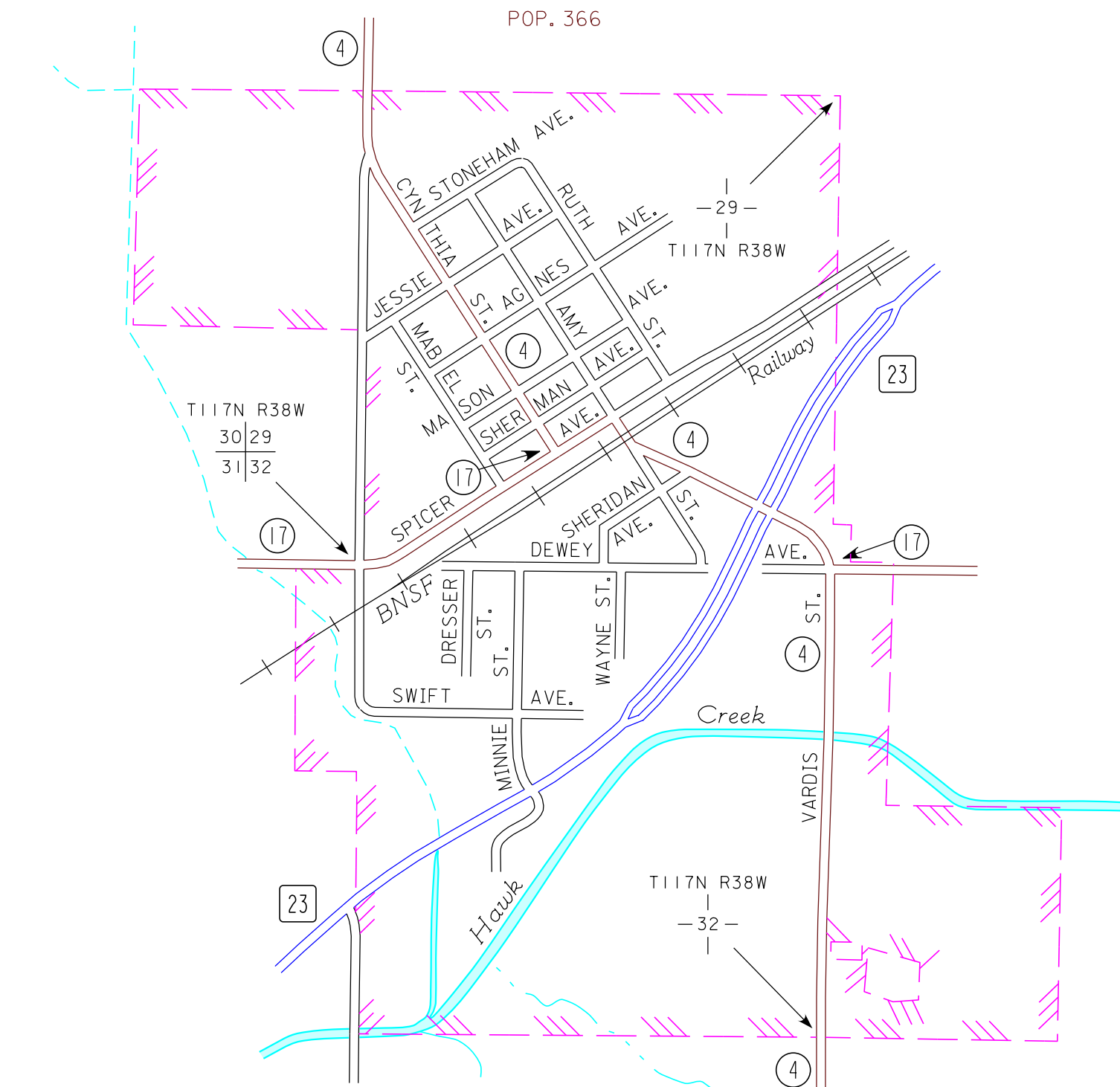
CLARA CITY CHIPPEWA COUNTY POP. 1,360



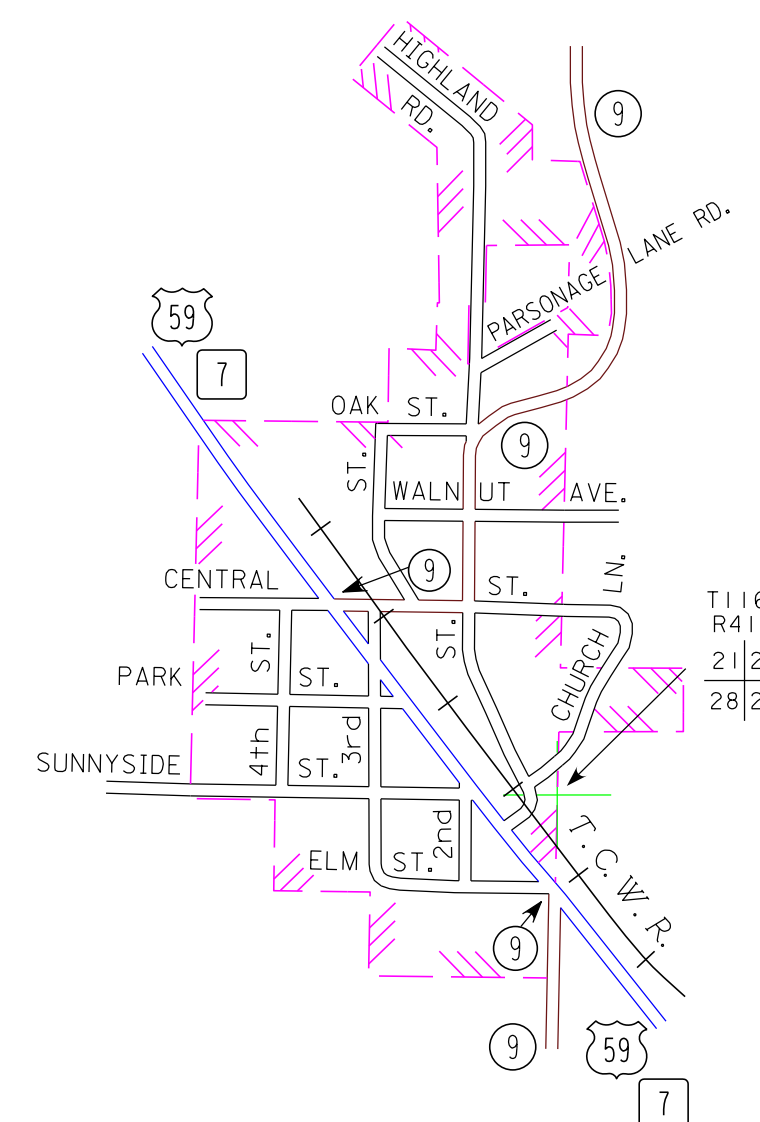
MILAN CHIPPEWA COUNTY POP. 369



MAYNARD CHIPPEWA COUNTY POP. 366



WATSON CHIPPEWA COUNTY POP. 205



- MUNICIPALITIES SHOWN
ON THIS SHEET
- CLARA CITY
 - MAYNARD
 - MILAN
 - WATSON
- GRANITE FALLS:
See
Yellow Medicine Co.
Sheet 3 of 3

To request information from this document in an alternative format, call 651-369-4718 or 1-800-657-3774 (Greater Minnesota), 711 or 1-800-627-3529 (Minnesota Relay). You may also send an e-mail to ADRequest.dot@state.mn.us. (Please request at least one week in advance).

NOTE: 2010 U.S. CENSUS FIGURES SHOWN FOR ALL MUNICIPALITIES UNLESS OTHERWISE STATED.