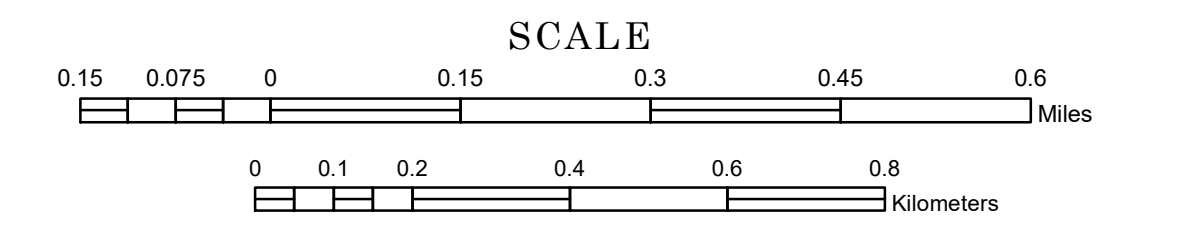


# MUNICIPALITY OF MIZPAH

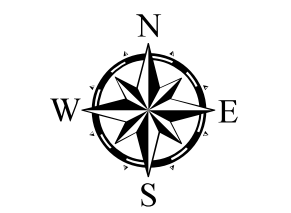
PREPARED BY THE  
MINNESOTA DEPARTMENT OF TRANSPORTATION  
OFFICE OF TRANSPORTATION SYSTEM MANAGEMENT

IN COOPERATION WITH  
U.S. DEPARTMENT OF TRANSPORTATION  
FEDERAL HIGHWAY ADMINISTRATION

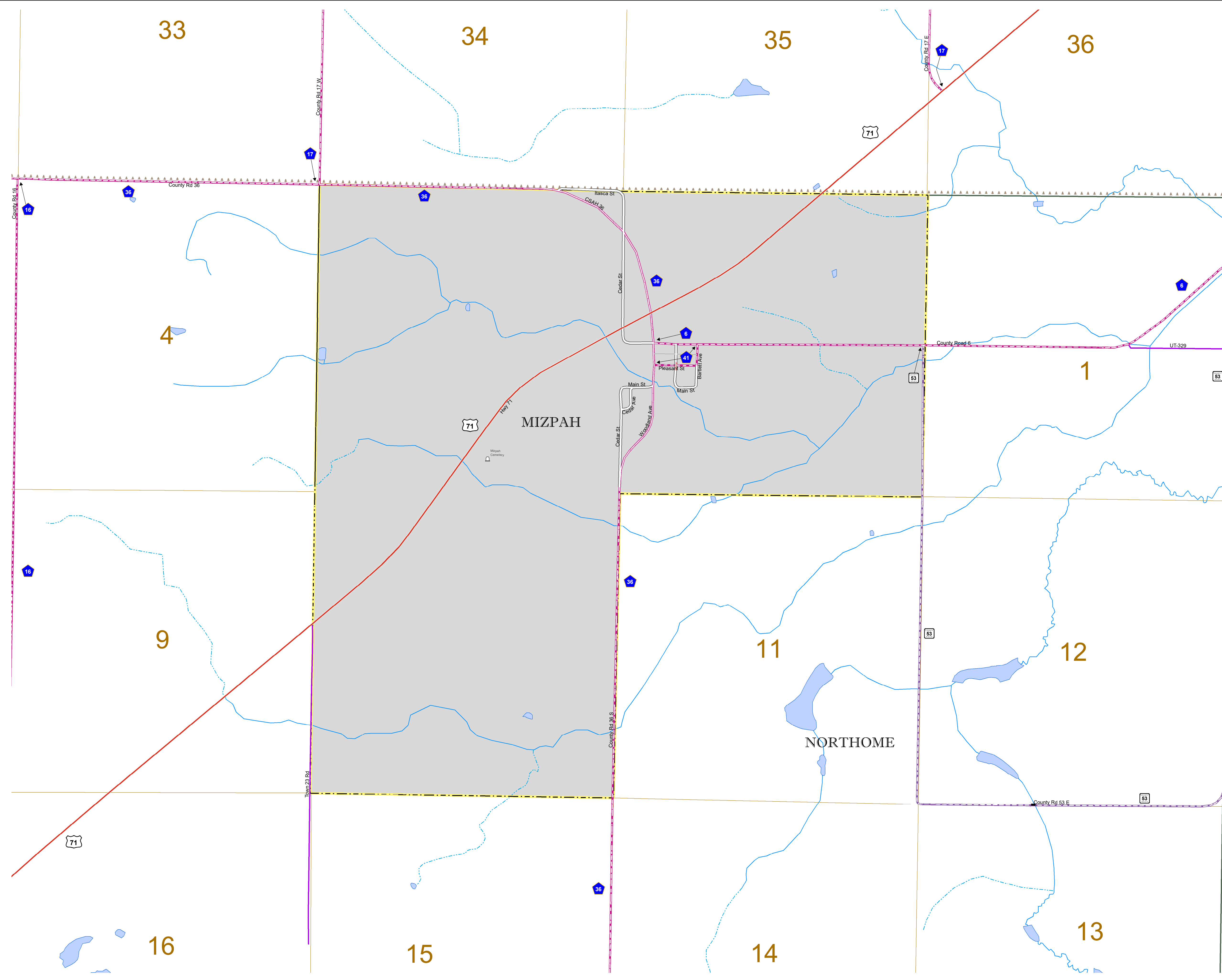


2023

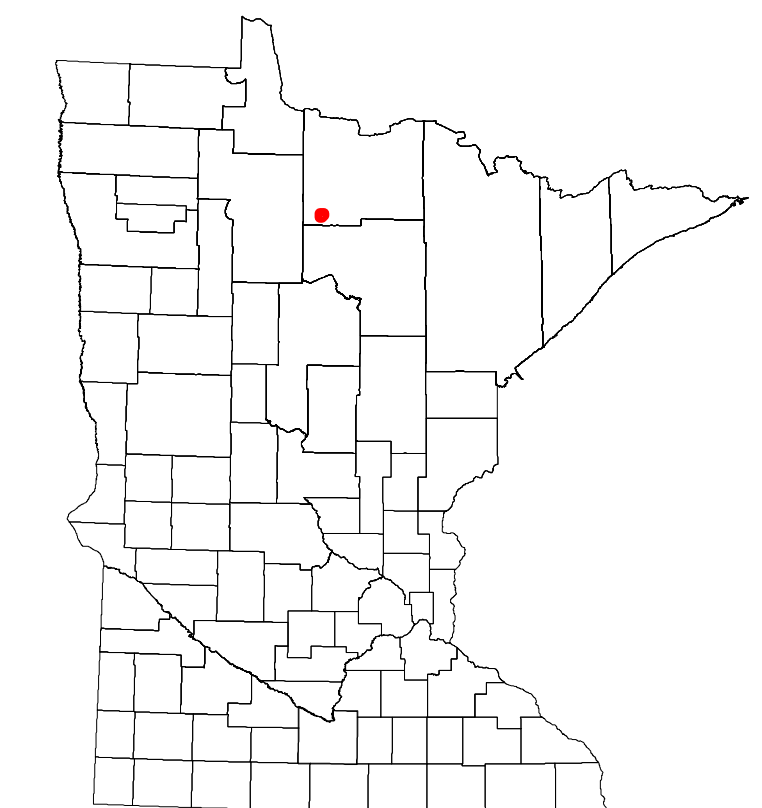
Projection:  
Transverse Mercator  
NAD 1986  
UTM Zone 15



North American Datum  
of 1986



ROAD AND ROADWAY FEATURES	PUBLIC SERVICE FEATURES
INTERSTATE	MINOT OFFICE
US HIGHWAY	MINOT TRUCK STATION
MIN HIGHWAY	HIGHWAY PATROL DISTRICT OFFICE
COUNTY STATE AID HIGHWAY	STATE TRAVEL INFORMATION CENTER
MUNICIPAL STREET	REST AREA (Full Service)
MUNICIPAL STATE AID STREET	REST AREA (Quick Turn)
PRIVATE STREET/ROAD	WAYSIDE (Only on Pk or Trk)
TOWNSHIP ROAD	PUBLIC ACCESS POINT
UNORGANIZED TERRITORY ROAD	LOCAL PARK
RAMP OR CONNECTOR	FARMS/GROUNDS
INTERSTATE EXIT	PORT OF ENTRY
GREAT RIVER ROAD	PARK AND RIDE LOT
OTHER ROADS	PUBLIC UNIVERSITY/COLLEGE
FARMROAD	PRIVATE UNIVERSITY/COLLEGE
STATE PARK	ELEMENTARY SCHOOL
NATIONAL PARK	MIDDLE SCHOOL
MONUMENT	HIGH SCHOOL
STATE FOREST	
NATIONAL FOREST	
NATIONAL WILDLIFE STATE GAME	
RAILROAD AND RAILWAY FEATURES	AVIATION FEATURES
EMPIRE BUILDER STATION (Amtrak)	COMMERCIAL AIRPORT
NORTHSTAR STATION (Commuter)	GENERAL AIRPORT
LIGHT RAIL	AIRSTRIP
BLUE LINE STATION	SEAPLANE
GREEN LINE STATION	AIRPORT RUNWAY
INFRASTRUCTURE FEATURES	CULTURAL FEATURES
LONG BRIDGE (100' OR GREATER SPAN)	STATE HISTORICAL MARKER
MAJOR BRIDGE (20' TO 100' SPAN)	HISTORIC DISTRICT
MINOR BRIDGE (2' TO 20' SPAN)	HISTORIC SITE
ROAD TUNNEL (100' OR GREATER SPAN)	MONUMENT
RAILROAD BRIDGE (100' OR GREATER SPAN)	CEMETERY
RAILROAD BRIDGE (LESSER 100' SPAN)	
SKYWAY	TRIBAL LAND
PEDESTRIAN BRIDGE	COUNTY
PEDESTRIAN TUNNEL	MUNICIPALITY
DAM	ADJACENT MUNICIPALITY
LOCK AND DAM	FEDERAL ADJUSTED URBAN AREA (2014)
PUBLIC FACILITIES	MILITARY
STATE CAPITOL	STATE PARK
FEDERAL COURTHOUSE	REGIONAL PARK
COUNTY COURTHOUSE	NATIONAL FOREST
ARMORY	NATIONAL AND STATE FOREST
CITY HALL	STATE FOREST
TOWN HALL	NATIONAL TRAIL
COMMUNITY CENTER	WILDLIFE REFUGE AREA
ARENA	WILDLIFE MANAGEMENT AREA
STADIUM	HYDROLOGIC FEATURES
POST OFFICE	RIVER OR STREAM (PERMANENT)
POLICE STATION	LAKE, POND OR RESERVOIR
FIRE STATION	STREAM (INTERMITTENT)
PUBLIC LIBRARY	DRAINAGE DITCH
PUBLIC MUSEUM	
EVENT CENTER	WETLAND
CITY CENTERS	ISLAND OR LAND
TRIBAL GOVERNMENT CENTER	REGIONAL WATERSHED
CITY CENTER	
LOCALLY INCORPORATED PLACE	
UNINCORPORATED COMMUNITY	



To request information from this document in an alternative format, call 651-366-4718 or 1-800-657-3774 (Greater Minnesota); 711 or 1-800-627-3529 (Minnesota Relay). You may also send an e-mail to ADarequest.dot@state.mn.us. (Please request at least one week in advance.)

LAST EDITED ON 12-10-2023

Population (U.S. Census 2020): 58