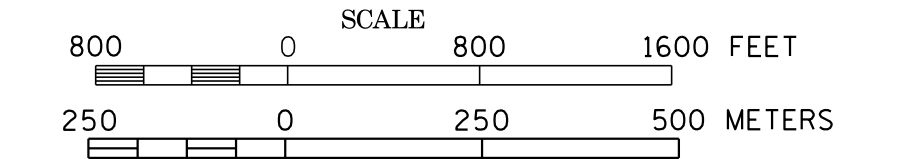
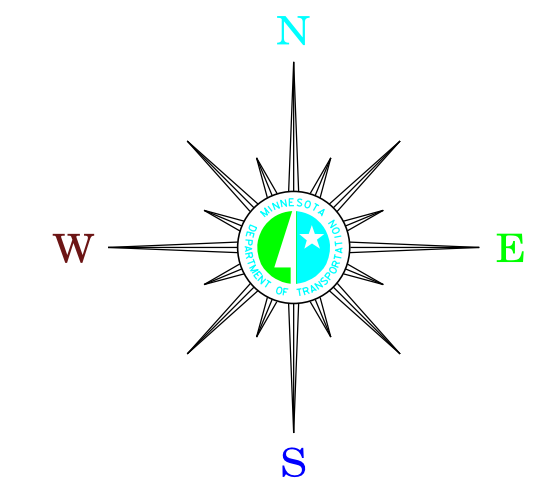


MUNICIPALITIES OF
OTTER TAIL CO.

PREPARED BY THE
MINNESOTA DEPARTMENT OF TRANSPORTATION
OFFICE OF TRANSPORTATION SYSTEM MANAGEMENT
IN COOPERATION WITH
U.S. DEPARTMENT OF TRANSPORTATION
FEDERAL HIGHWAY ADMINISTRATION

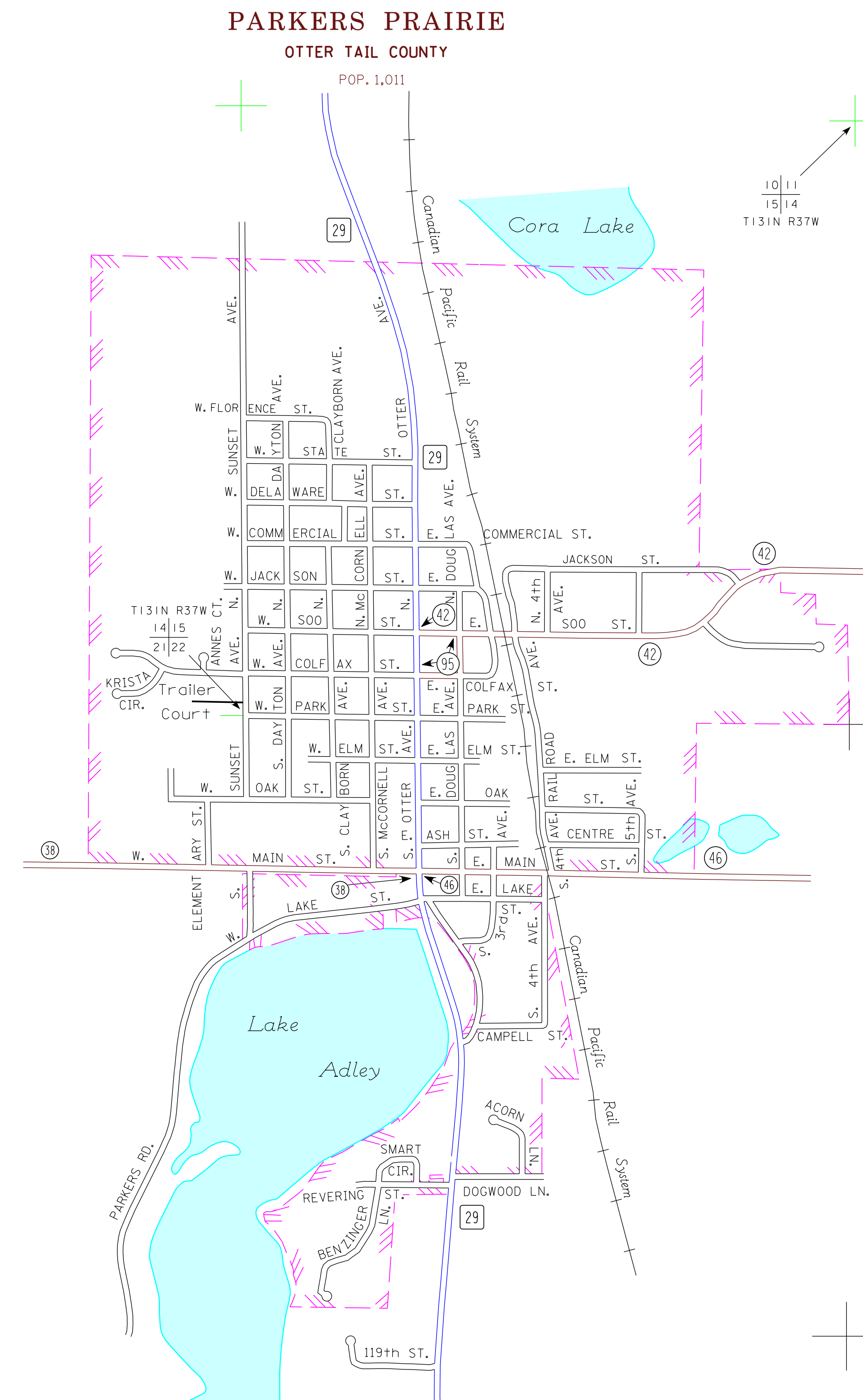
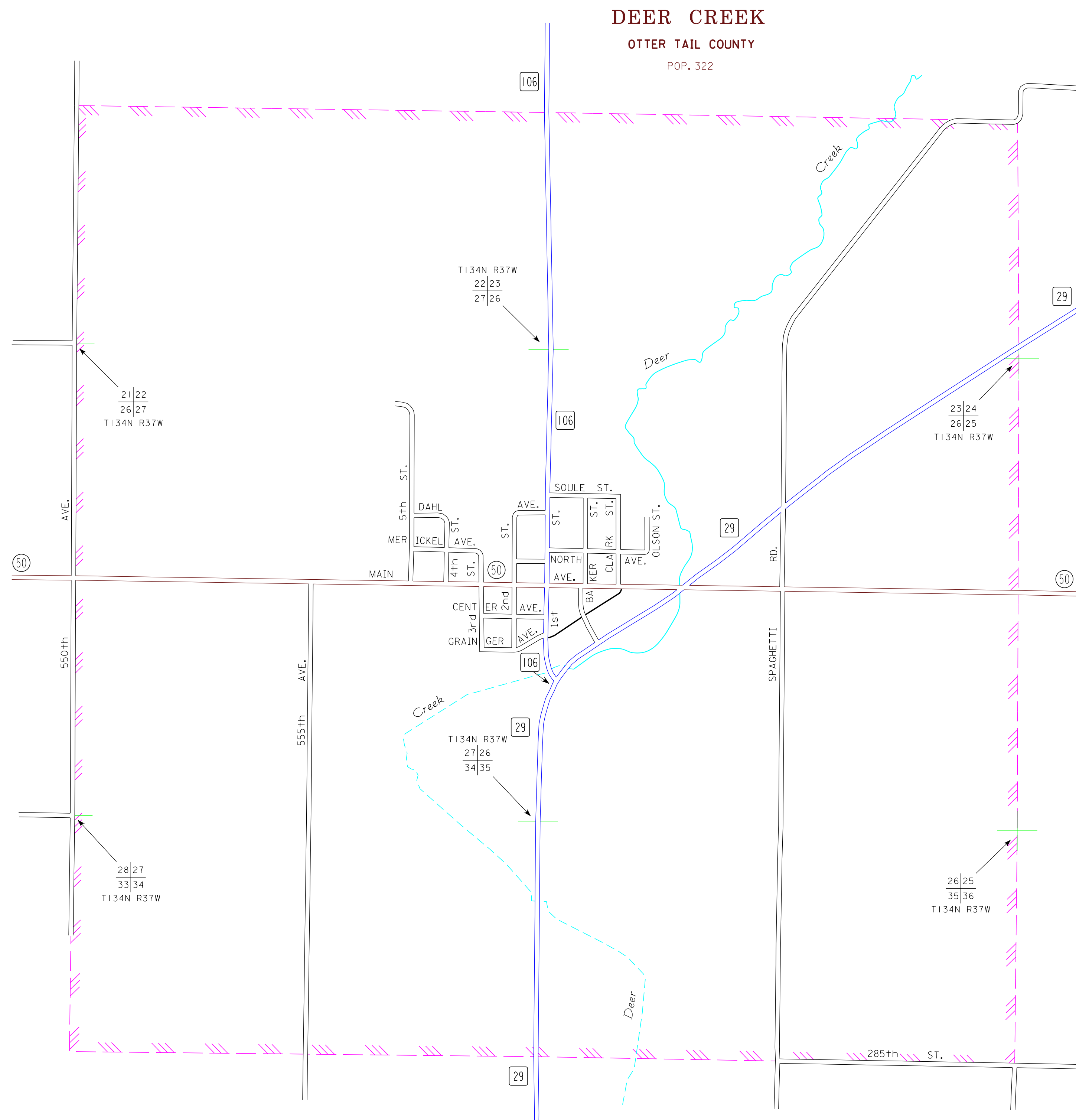


2015
BASIC DATA - 2013



LEGEND

- INTERSTATE TRUNK HIGHWAY..... (I-35)
- U.S. TRUNK HIGHWAY..... (106)
- STATE TRUNK HIGHWAY..... (29)
- COUNTY STATE AID HIGHWAY..... (50)
- COUNTY ROAD..... (29)
- PUBLIC ROAD.....
- PRIVATE ROAD.....
- CORPORATE LIMITS.....



MUNICIPALITIES SHOWN
ON THIS SHEET
DEER CREEK
PARKERS PRAIRIE

To request information from this document in an alternative format, call 651-366-4718 or 1-800-657-3774 (Greater Minnesota), 711 or 1-800-627-3529 (Minnesota Relay). You may also send an e-mail to ADRequest@state.mn.us. (Please request at least one week in advance).

NOTE: 2010 U.S. CENSUS FIGURES SHOWN FOR ALL MUNICIPALITIES UNLESS OTHERWISE STATED.