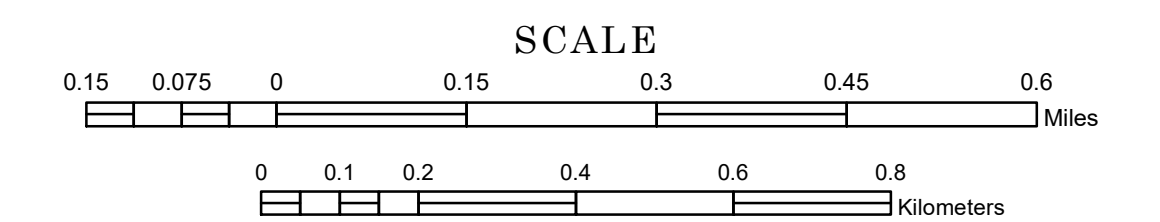


MUNICIPALITY OF BELTRAMI

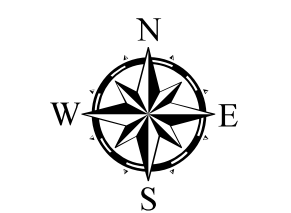
PREPARED BY THE
MINNESOTA DEPARTMENT OF TRANSPORTATION
OFFICE OF TRANSPORTATION SYSTEM MANAGEMENT

IN COOPERATION WITH
U.S. DEPARTMENT OF TRANSPORTATION
FEDERAL HIGHWAY ADMINISTRATION

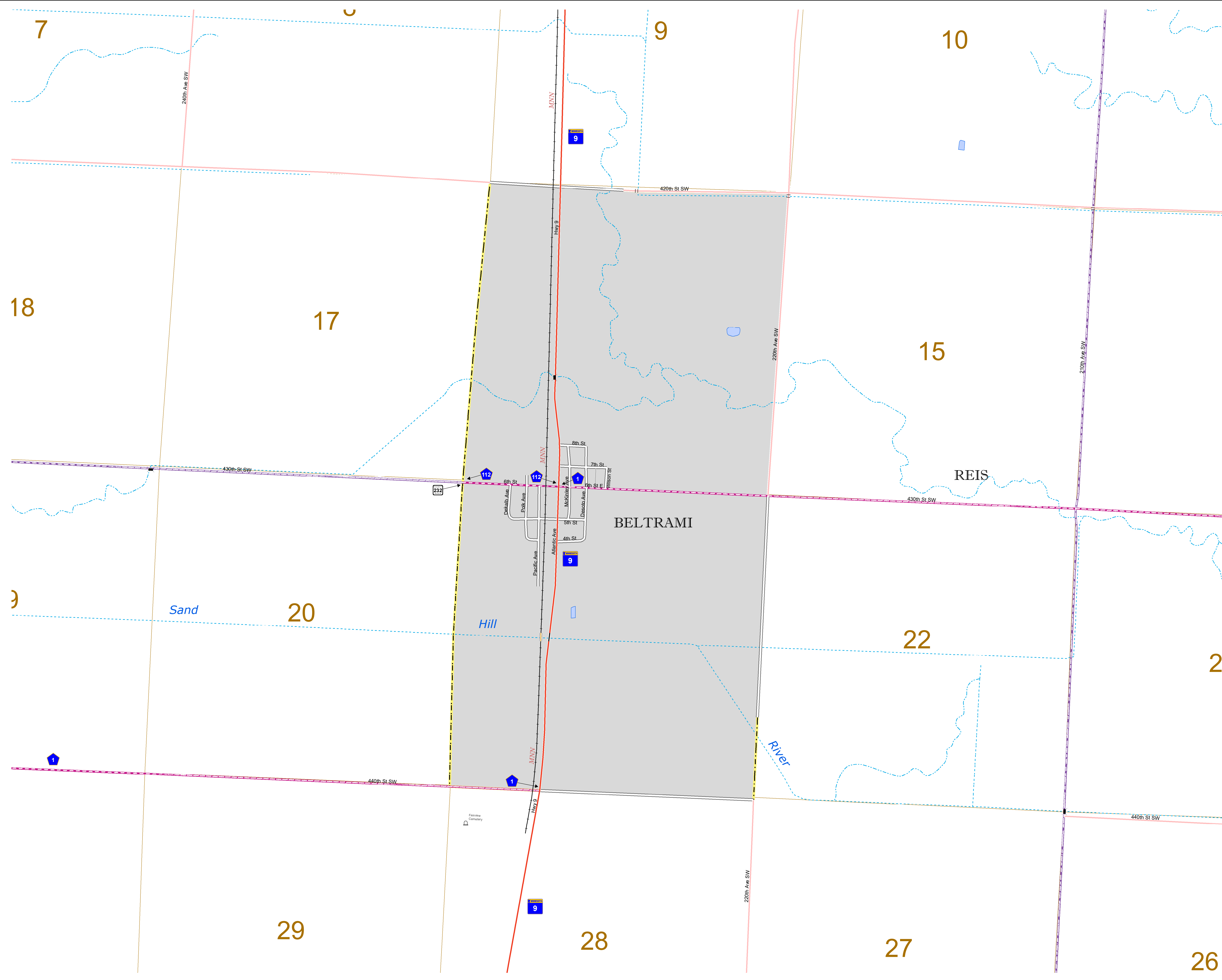


2023

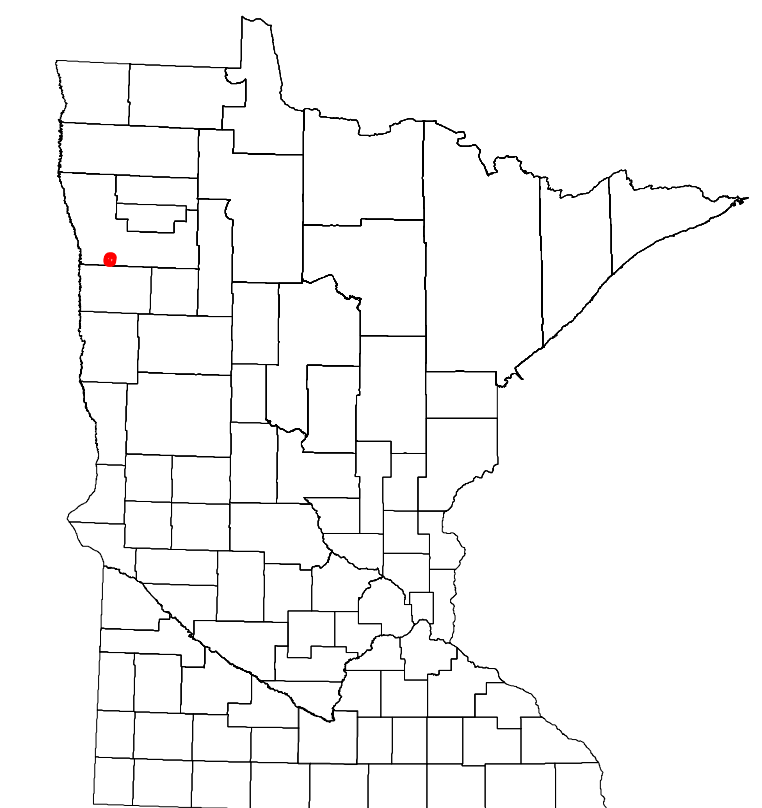
Projection:
Transverse Mercator
NAD 1986
UTM Zone 15



North American Datum
of 1986



ROAD AND ROADWAY FEATURES	PUBLIC SERVICE FEATURES
INTERSTATE	MINOT OFFICE
US HIGHWAY	MINOT TRUCK STATION
STATE AID HIGHWAY	HIGHWAY PATROL DISTRICT OFFICE
COUNTY ROAD	STATE TRAVEL INFORMATION CENTER
MUNICIPAL STREET	REST AREA (Full Service)
MUNICIPAL STATE AID STREET	REST AREA (Quick Turn)
PRIVATE STREET/ROAD	WAYSIDE (Only on Pk Trunk)
TOWNSHIP ROAD	PUBLIC ACCESS POINT
UNORGANIZED TERRITORY ROAD	LOCAL PARK
RAMP OR CONNECTOR	FARMS/ROADS
INTERSTATE EXIT	PORT OF ENTRY
GREAT RIVER ROAD	PARK AND RIDE LOT
OTHER ROADS	PUBLIC UNIVERSITY/COLLEGE
FARMROAD	PRIVATE UNIVERSITY/COLLEGE
STATE PARK	ELEMENTARY SCHOOL
NATIONAL PARK	MIDDLE SCHOOL
NATIONAL MONUMENT	HIGH SCHOOL
NATIONAL WILDLIFE STATE GAME	
RAILROAD AND RAILWAY FEATURES	AVIATION FEATURES
RAILROAD	COMMERCIAL AIRPORT
EMPIRE BUILDER STATION (ARTHRX)	GENERAL AIRPORT
NORTSTAR STATION (COMMUTER)	AIRSTRIP
LIGHT RAIL	SEAPLANE
BLUE LINE STATION	AIRPORT RUNWAY
GREEN LINE STATION	
INFRASTRUCTURE FEATURES	CULTURAL FEATURES
LONG BRIDGE (100' OR GREATER SPAN)	STATE HISTORICAL MARKER
MAJOR BRIDGE (20' TO 100' SPAN)	HISTORIC DISTRICT
MINOR BRIDGE (2' TO 20' SPAN)	HISTORIC SITE
ROAD TUNNEL (100' OR GREATER SPAN)	MONUMENT
RAILROAD TUNNEL (100' OR GREATER SPAN)	CEMETERY
RAILROAD BRIDGE (LARGER 100' SPAN)	
SKYWAY	TRIBAL LAND
PEDESTRIAN BRIDGE	COUNTY
PEDESTRIAN TUNNEL	MUNICIPALITY
DAM	ADJACENT MUNICIPALITY
LOCK AND DAM	FEDERAL ADJUSTED URBAN AREA (2014)
PUBLIC FACILITIES	BOUNDARY FEATURES
STATE CAPITOL	MILITARY
FEDERAL COURTHOUSE	STATE PARK
COUNTY COURTHOUSE	REGIONAL PARK
ARMORY	NATIONAL FOREST
CITY HALL	NATIONAL AND STATE FOREST
TOWN HALL	STATE FOREST
COMMUNITY CENTER	NATIONAL TRAIL
ARENA	WILDLIFE REFUGE AREA
STADIUM	WILDLIFE MANAGEMENT AREA
POST OFFICE	
POLICE STATION	
FIRE STATION	
PUBLIC LIBRARY	
PUBLIC MUSEUM	
EVENT CENTER	
CITY CENTERS	HYDROLOGIC FEATURES
TRIBAL GOVERNMENT CENTER	RIVER OR STREAM (PERMANENT)
CITY CENTER	LAKE, POND OR RESERVOIR
LOCALLY INCORPORATED PLACE	STREAM (PERMANENT)
UNINCORPORATED COMMUNITY	DRAINAGE DITCH
	WETLAND
	ISLAND OR LAND
	REGIONAL WATERSHED



Population (U.S. Census 2020): 88

To request information from this document in an alternative format, call 651-366-4718 or 1-800-657-3774 (Greater Minnesota); 711 or 1-800-627-3529 (Minnesota Relay). You may also send an e-mail to ADRequest.dot@state.mn.us. (Please request at least one week in advance.)

LAST EDITED ON 12-10-2023