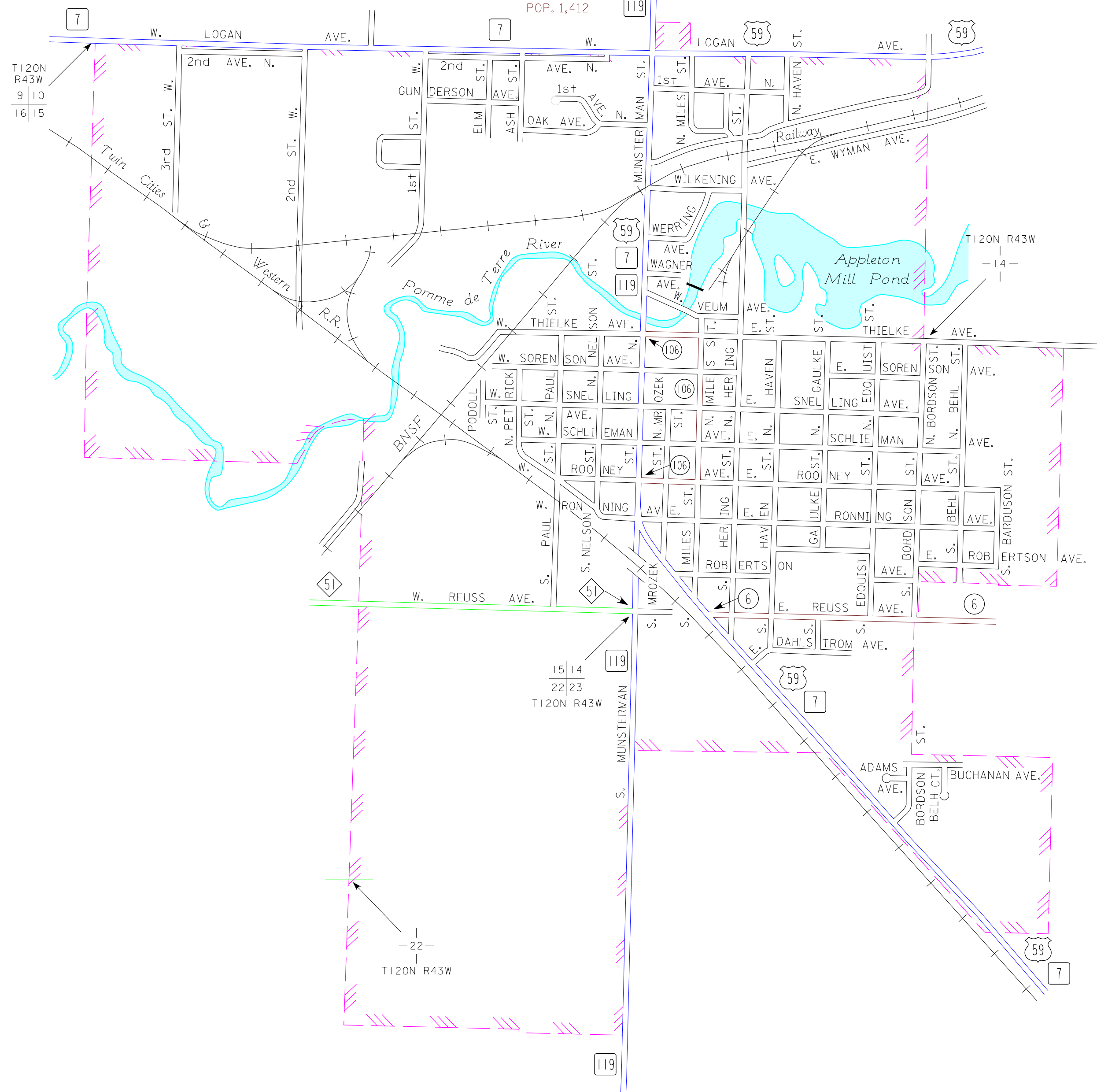
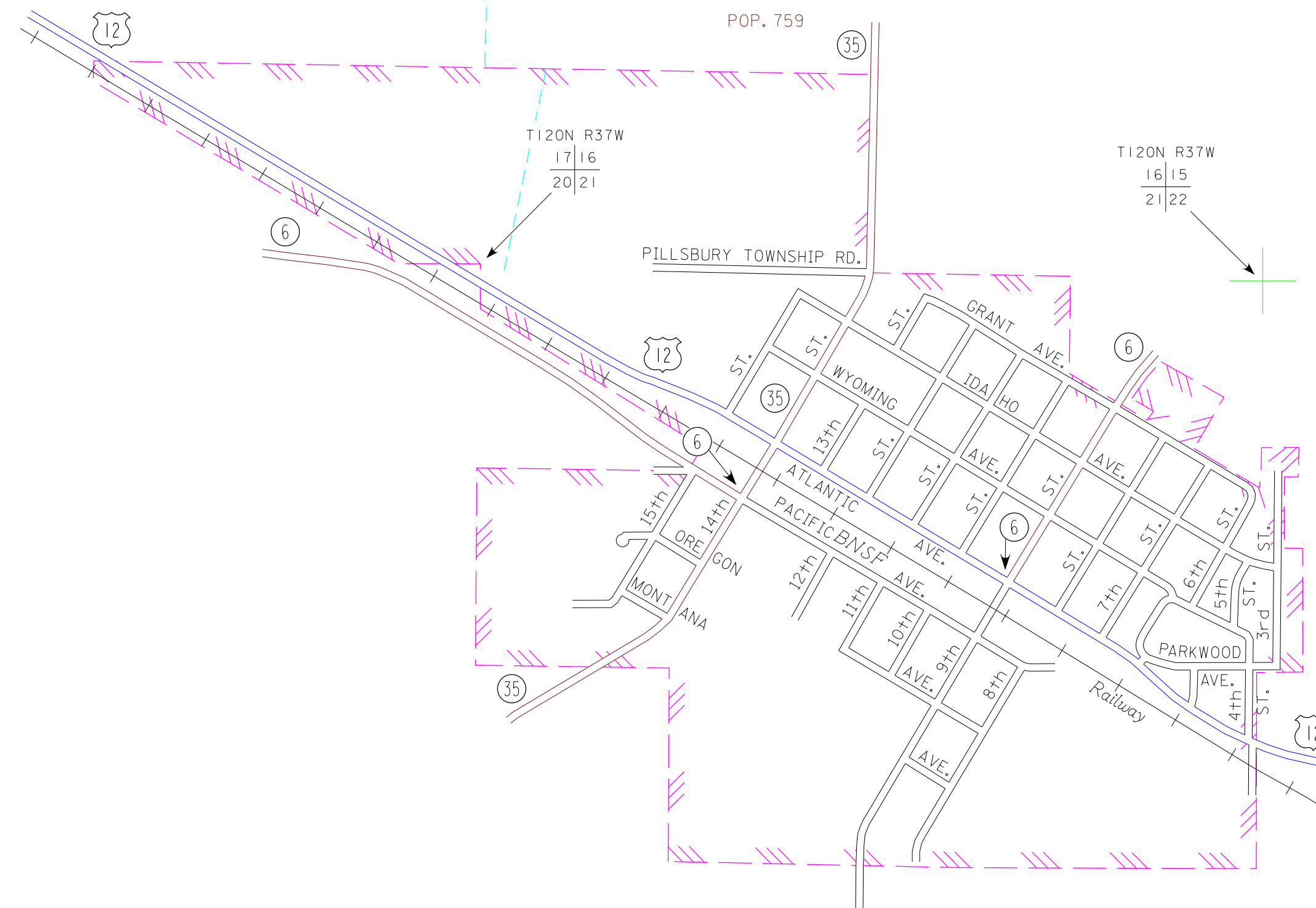


**APPLETON**  
SWIFT COUNTY  
POP. 1,412



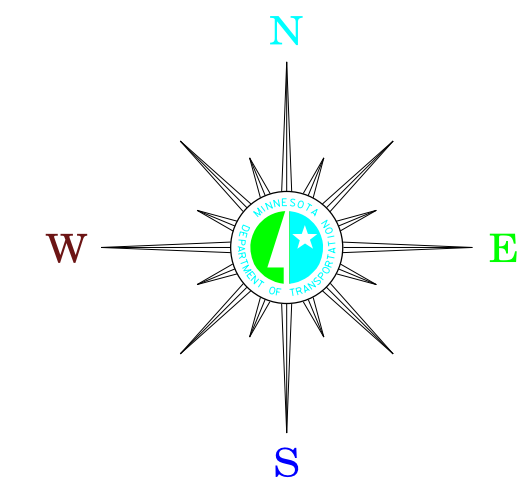
**KERKHOVEN**  
SWIFT COUNTY  
POP. 759



MUNICIPALITIES OF  
**SWIFT CO.**  
PREPARED BY THE  
MINNESOTA DEPARTMENT OF TRANSPORTATION  
OFFICE OF TRANSPORTATION SYSTEM MANAGEMENT  
IN COOPERATION WITH  
U.S. DEPARTMENT OF TRANSPORTATION  
FEDERAL HIGHWAY ADMINISTRATION



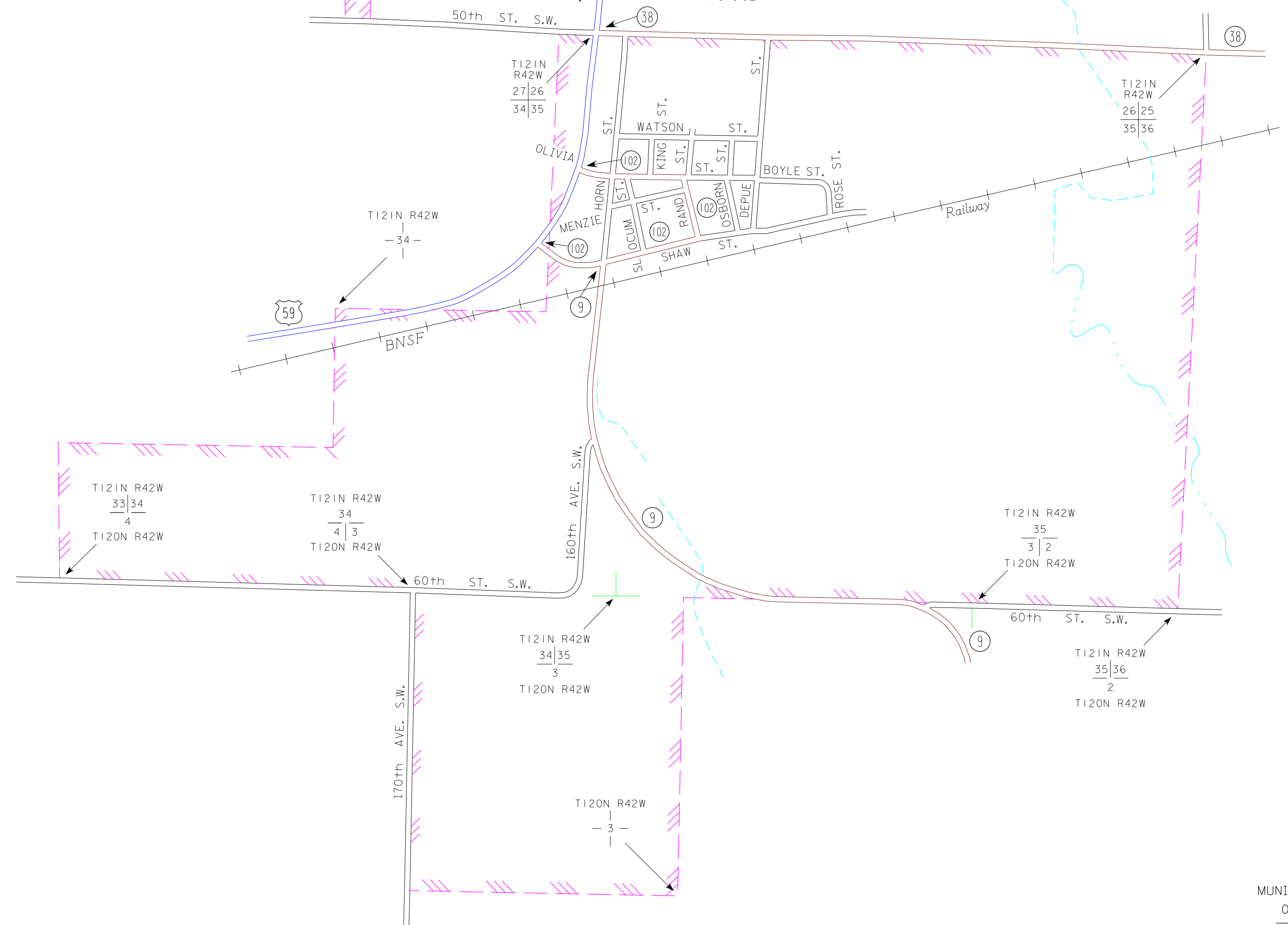
2015  
BASIC DATA - 2009



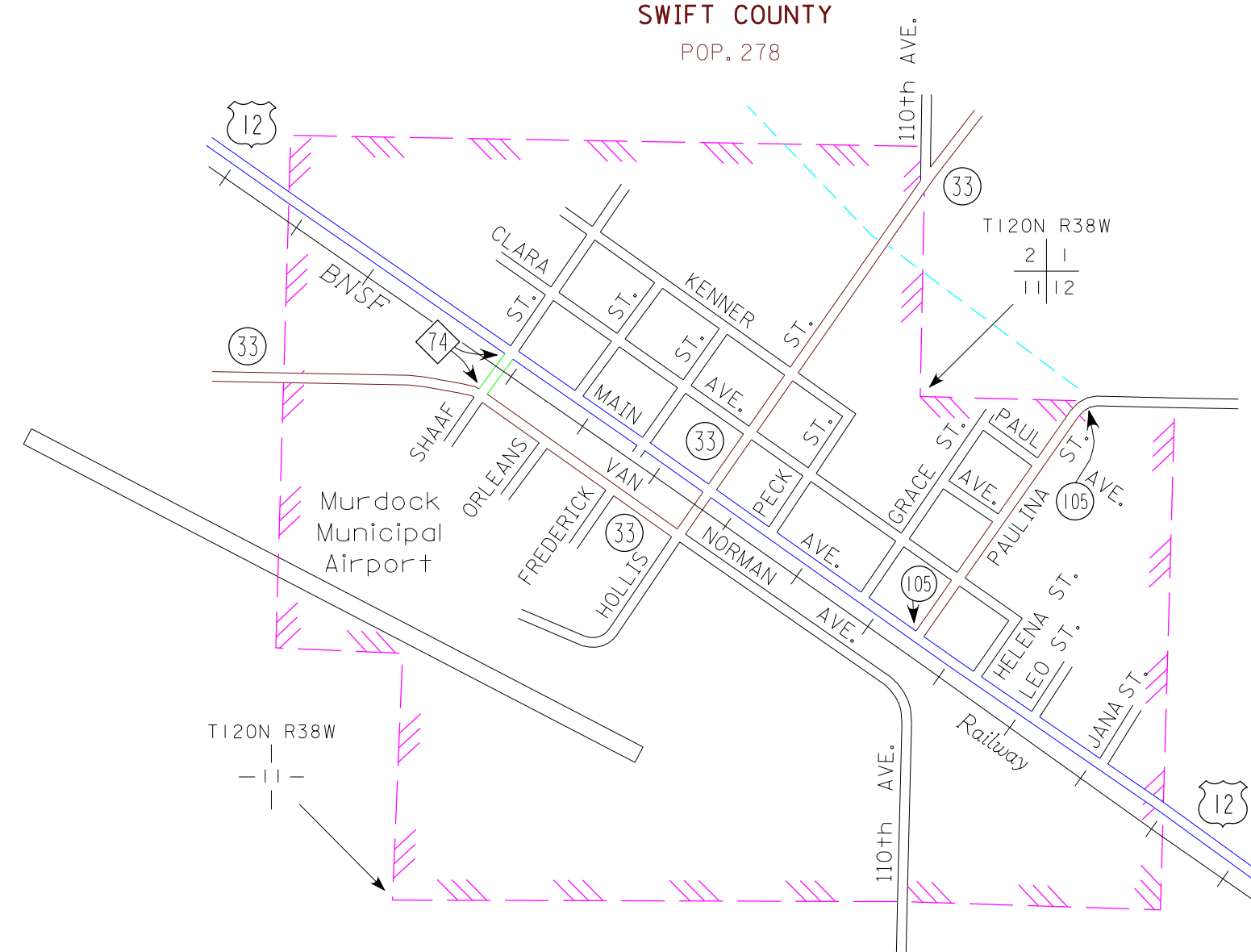
**LEGEND**

- INTERSTATE TRUNK HIGHWAY..... (I-35)
- U.S. TRUNK HIGHWAY..... (US-12)
- STATE TRUNK HIGHWAY..... (ST-35)
- COUNTY STATE AID HIGHWAY..... (CSA-23)
- COUNTY ROAD..... (C-19)
- PUBLIC ROAD..... (PR)
- PRIVATE ROAD..... (PRV)
- CORPORATE LIMITS..... (CL)

**HOLLOWAY**  
SWIFT COUNTY  
POP. 92



**MURDOCK**  
SWIFT COUNTY  
POP. 278



MUNICIPALITIES SHOWN  
ON THIS SHEET  
APPLETON  
HOLLOWAY  
KERKHOVEN  
MURDOCK

To request information from this document in an alternative format, call 651-366-4718 or 1-800-657-3774 (Greater Minnesota); 711 or 1-800-627-3529 (Minnesota Relay). You may also send an e-mail to [ADArequest.dca@state.mn.us](mailto:ADArequest.dca@state.mn.us) (Please request at least one week in advance).

NOTE: 2010 U.S. CENSUS FIGURES SHOWN FOR ALL MUNICIPALITIES UNLESS OTHERWISE STATED.