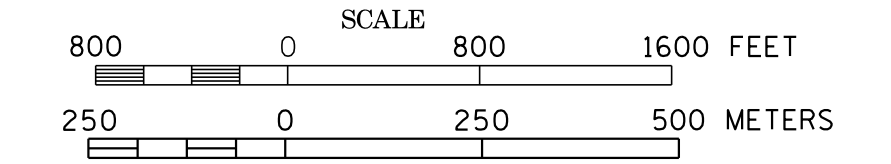
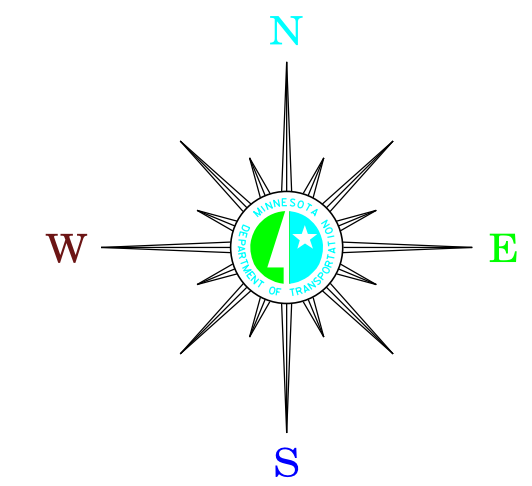


MUNICIPALITIES OF TODD CO.

PREPARED BY THE
MINNESOTA DEPARTMENT OF TRANSPORTATION
OFFICE OF TRANSPORTATION SYSTEM MANAGEMENT
IN COOPERATION WITH
U.S. DEPARTMENT OF TRANSPORTATION
FEDERAL HIGHWAY ADMINISTRATION

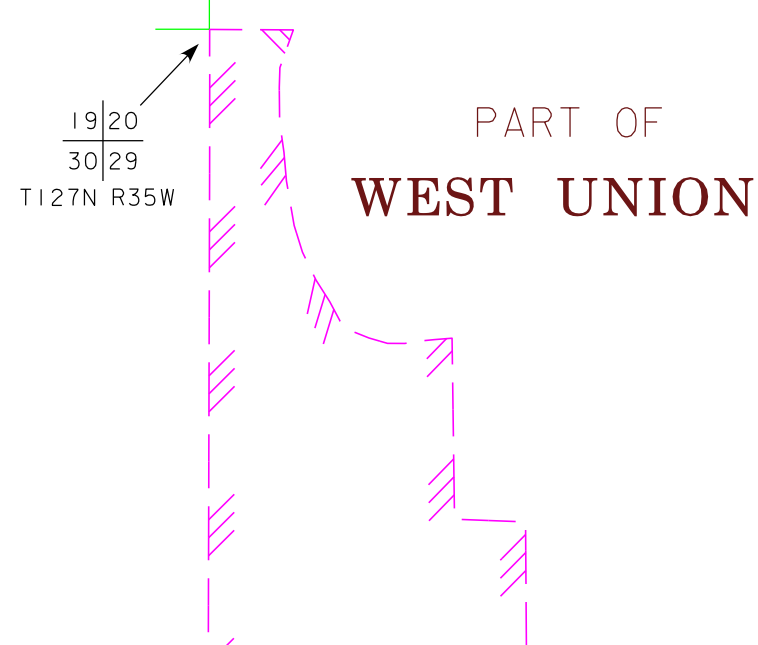
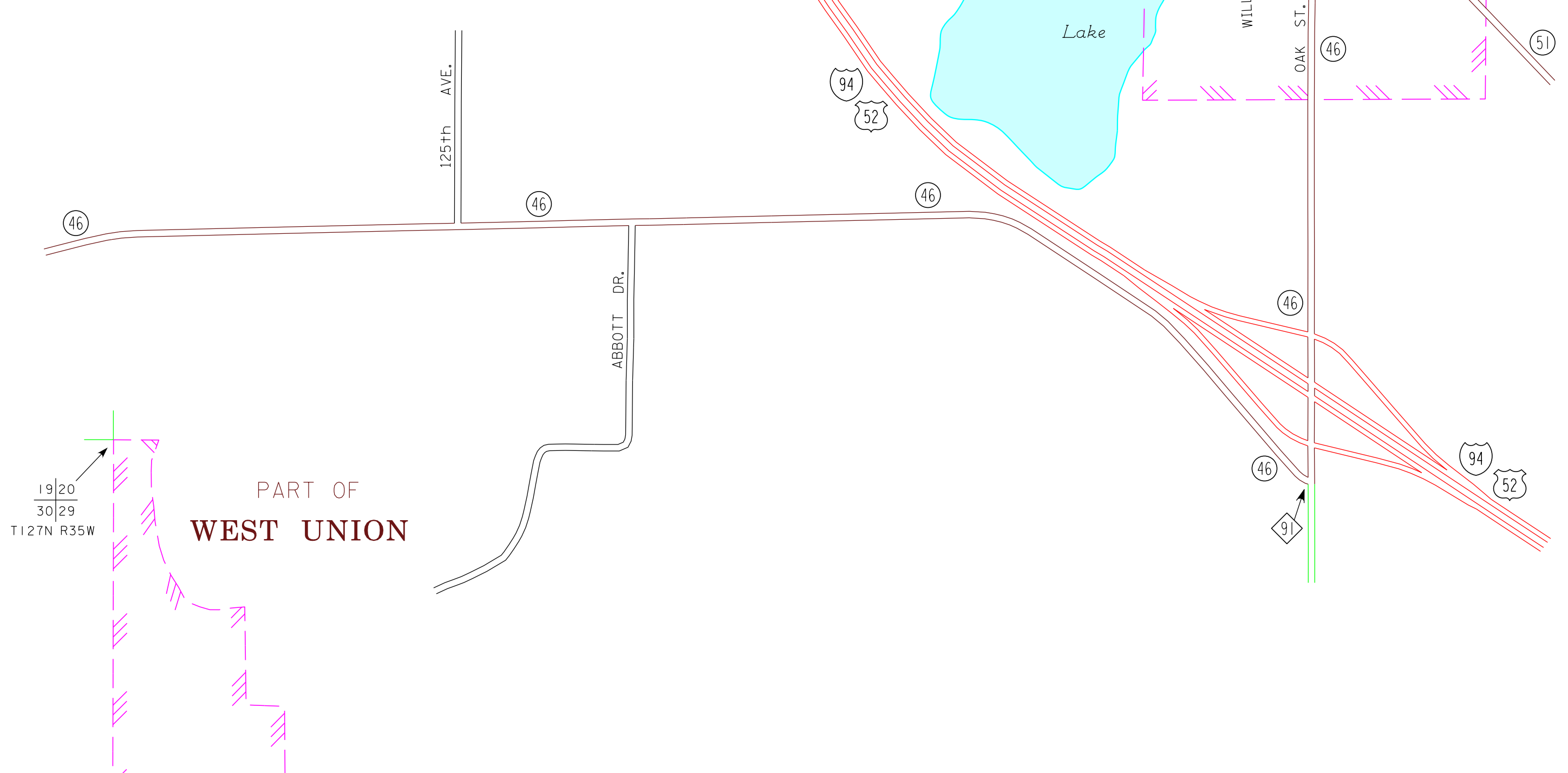
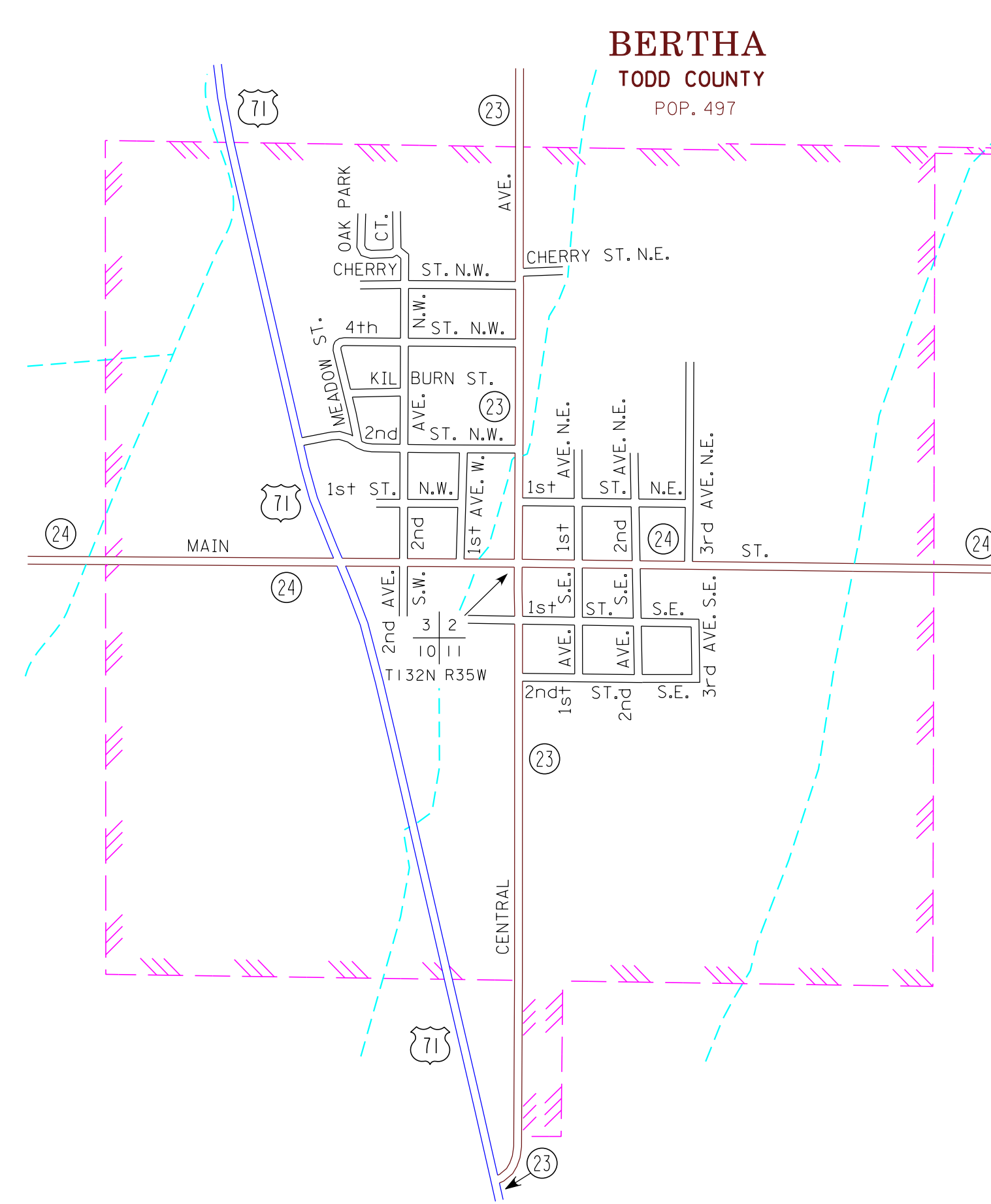
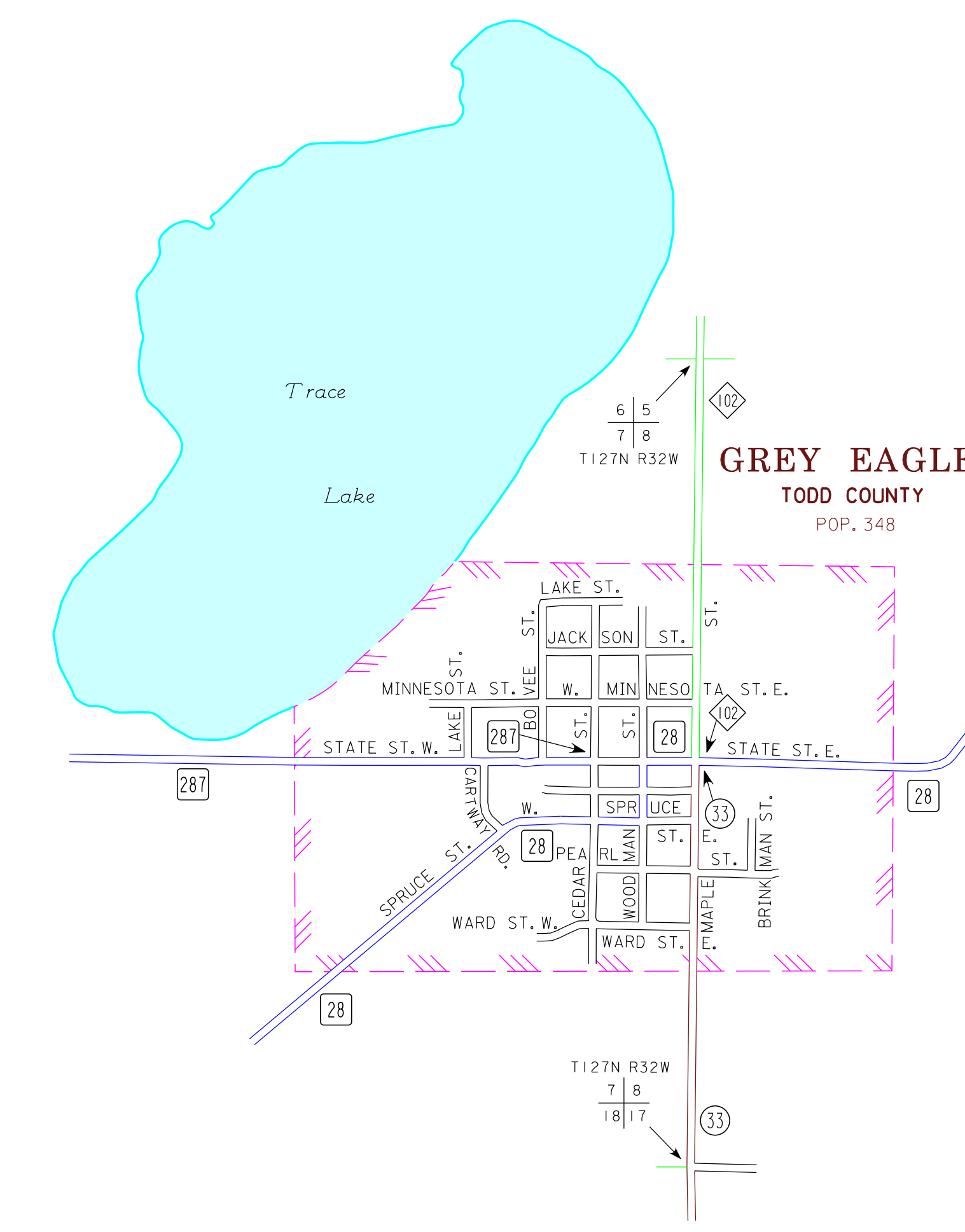
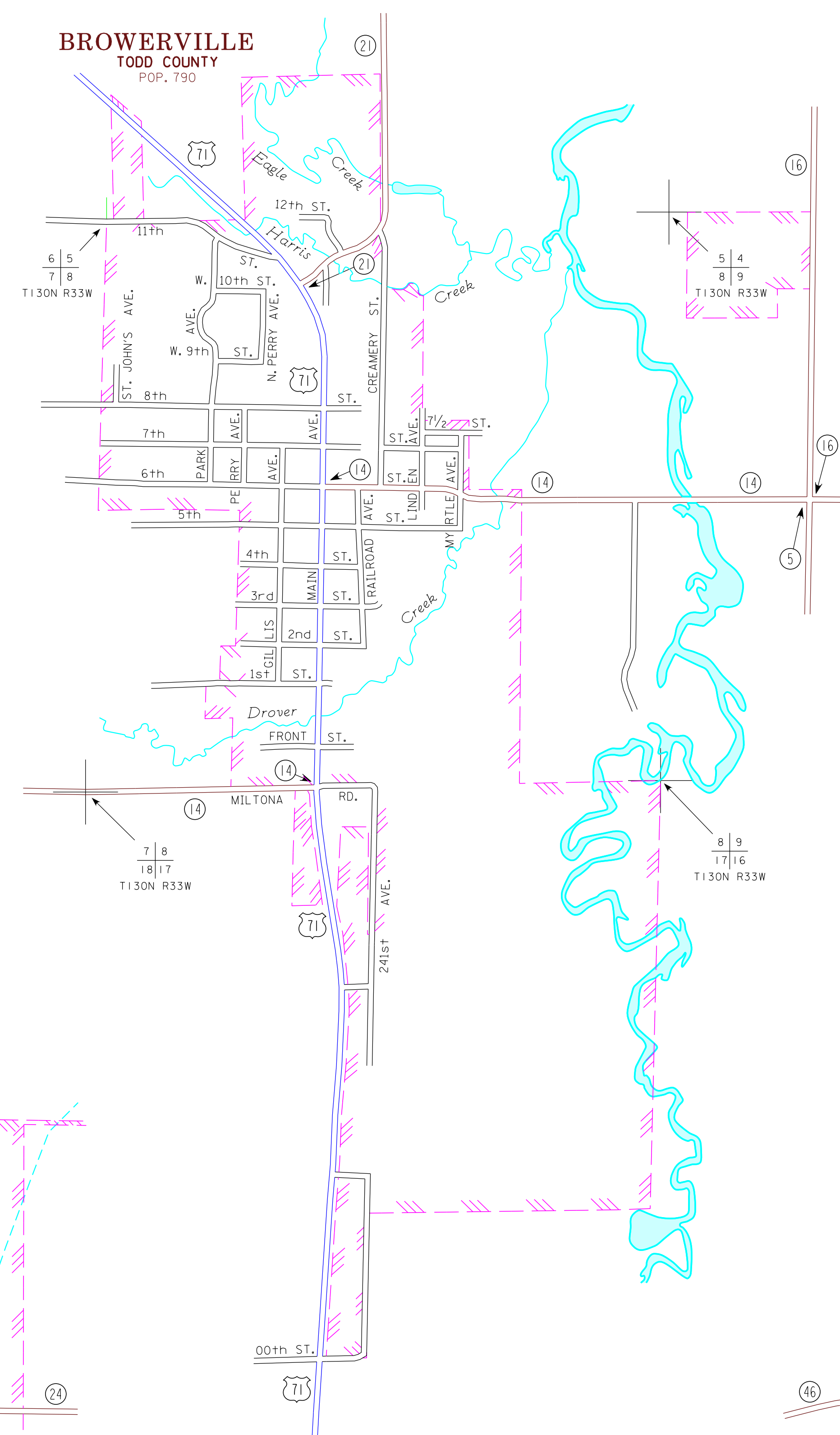


2015
BASIC DATA - 2009



LEGEND

- INTERSTATE TRUNK HIGHWAY..... (I-95)
- U.S. TRUNK HIGHWAY..... (710)
- STATE TRUNK HIGHWAY..... (55)
- COUNTY STATE AID HIGHWAY..... (23)
- COUNTY ROAD..... (14)
- PUBLIC ROAD..... (10)
- PRIVATE ROAD..... (11)
- CORPORATE LIMITS..... (---)



- MUNICIPALITIES SHOWN
ON THIS SHEET
- BERTHA
 - BROWERVILLE
 - GREY EAGLE
 - WEST UNION

- MOTLEY
(See Morrison Co.
3 of 5)
- OSAKIS
(See Douglas Co.
1 of 2)

To request information from this document in an alternative format, call 651-366-4718 or 1-800-657-3774 (Greater Minnesota); 711 or 1-800-627-3529 (Minnesota Relay). You may also send an e-mail to ADArequest.dot@state.mn.us. (Please request at least one week in advance).

NOTE: 2010 U.S. CENSUS FIGURES SHOWN FOR ALL MUNICIPALITIES UNLESS OTHERWISE STATED.