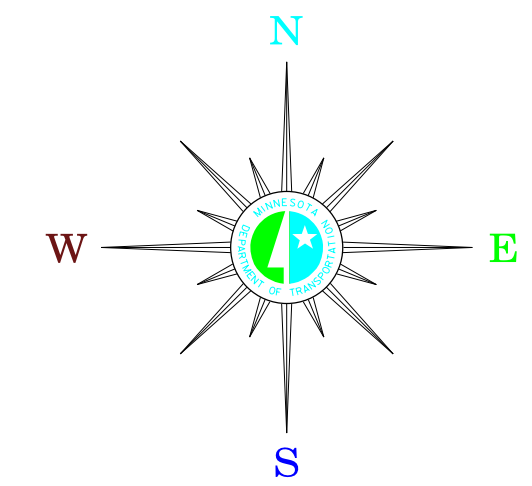


MUNICIPALITIES OF WILKIN CO.

PREPARED BY THE
MINNESOTA DEPARTMENT OF TRANSPORTATION
OFFICE OF TRANSPORTATION SYSTEM MANAGEMENT
IN COOPERATION WITH
U.S. DEPARTMENT OF TRANSPORTATION
FEDERAL HIGHWAY ADMINISTRATION

SCALE*
800 0 800 1600 FEET
250 0 250 500 METERS

2015
BASIC DATA - 2013

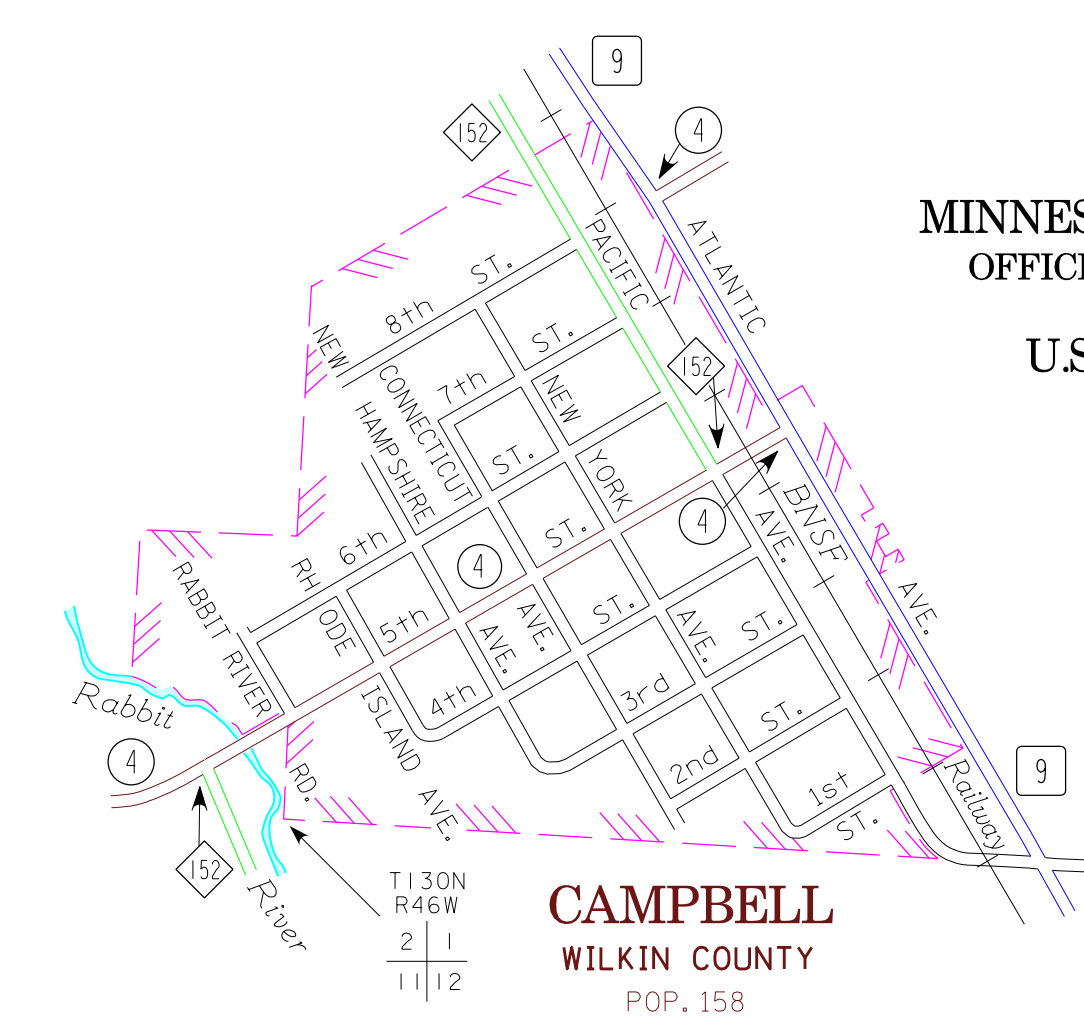
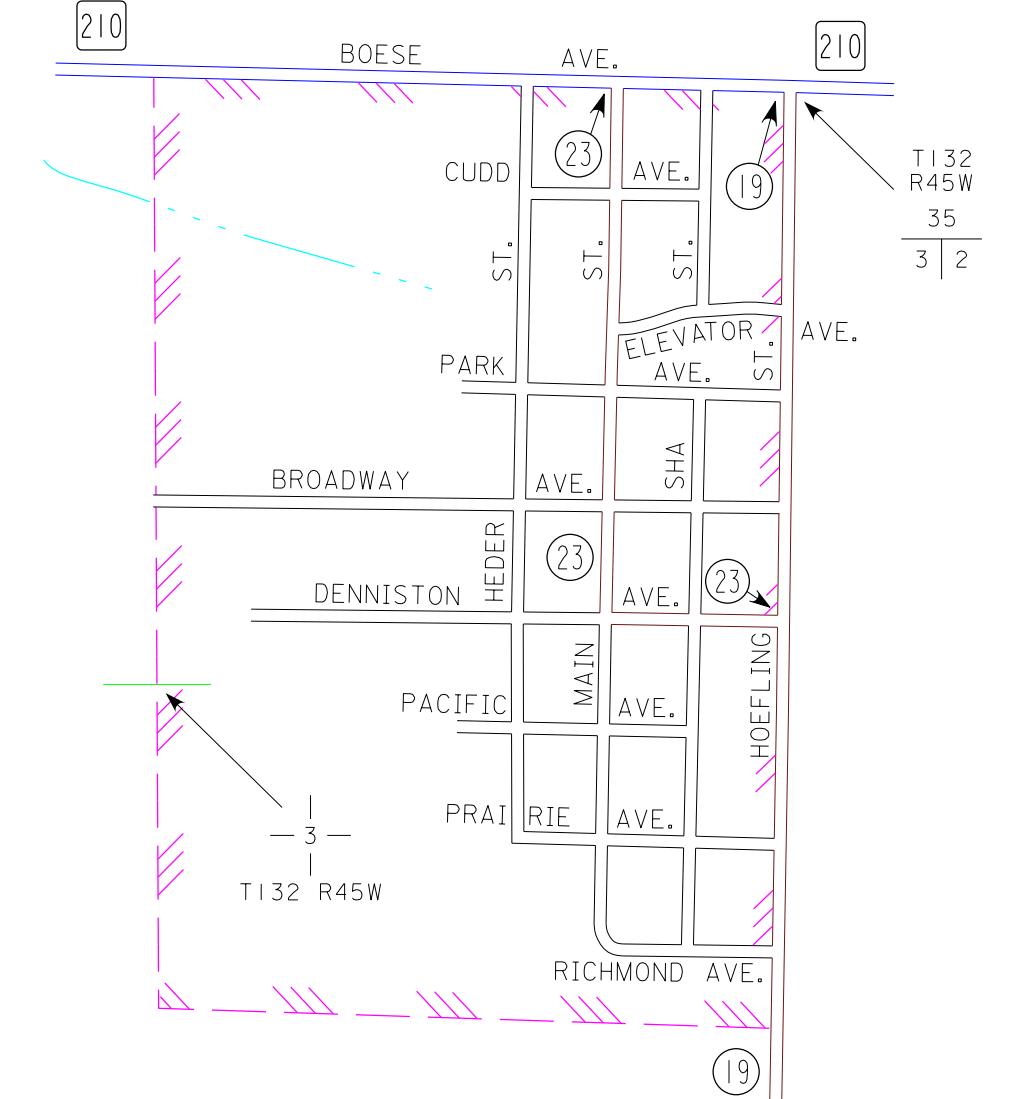


LEGEND

- INTERSTATE TRUNK HIGHWAY..... (I-95)
- U.S. TRUNK HIGHWAY..... (US-75)
- STATE TRUNK HIGHWAY..... (ST-55)
- COUNTY STATE AID HIGHWAY..... (CSA-23)
- COUNTY ROAD..... (C-16)
- PUBLIC ROAD..... (P-12)
- PRIVATE ROAD..... (PR-8)
- CORPORATE LIMITS..... (Dashed line)

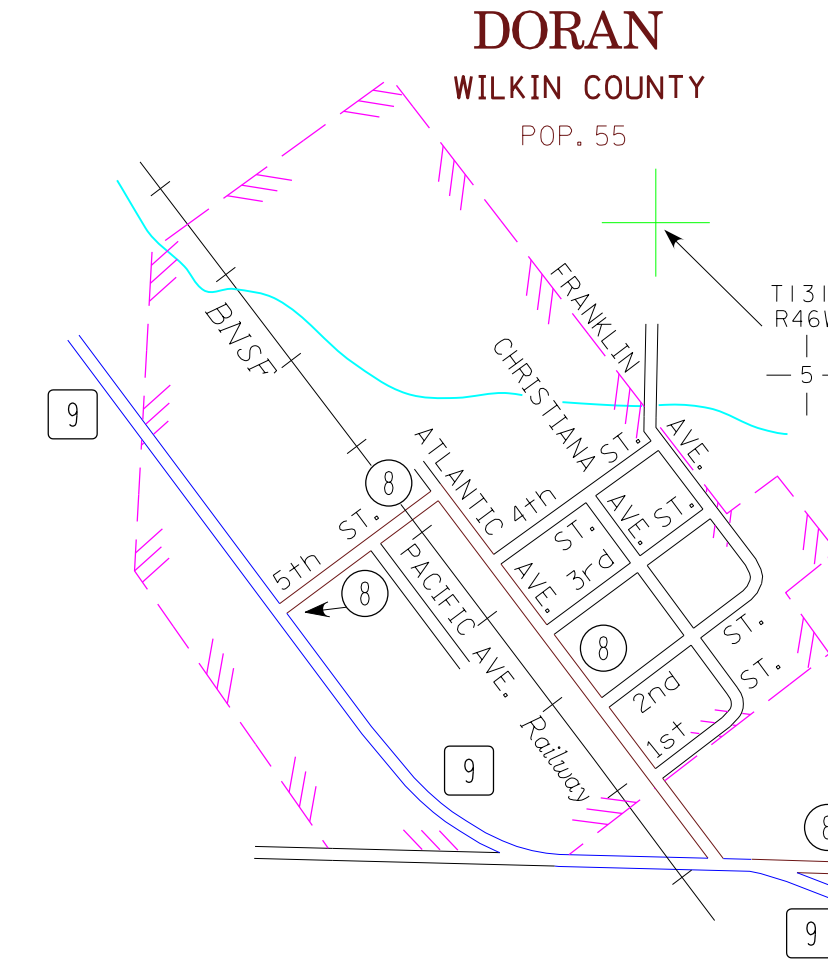
FOXHOME WILKIN COUNTY

POP. 116



CAMPBELL WILKIN COUNTY

POP. 158

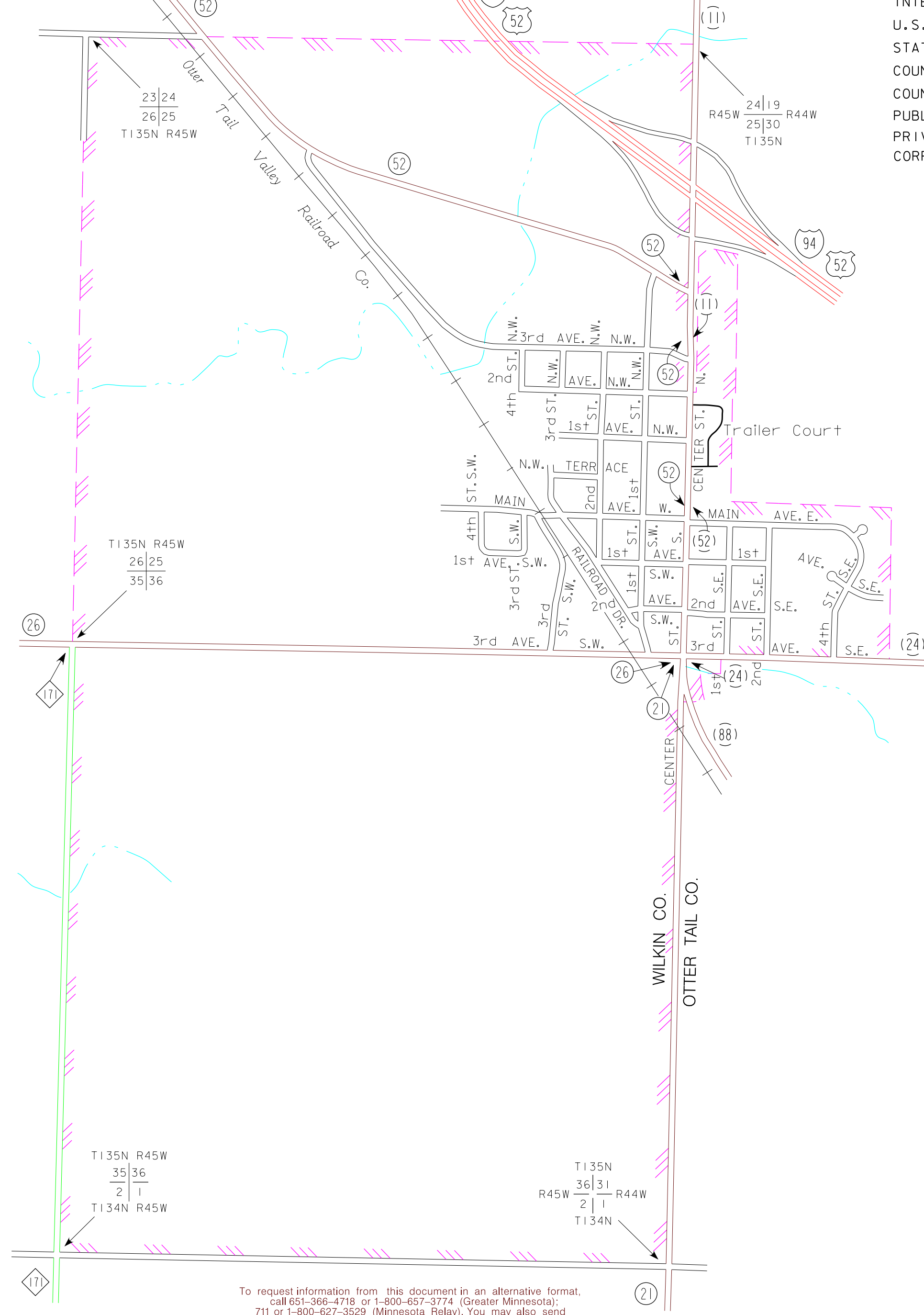


DORAN WILKIN COUNTY

POP. 55

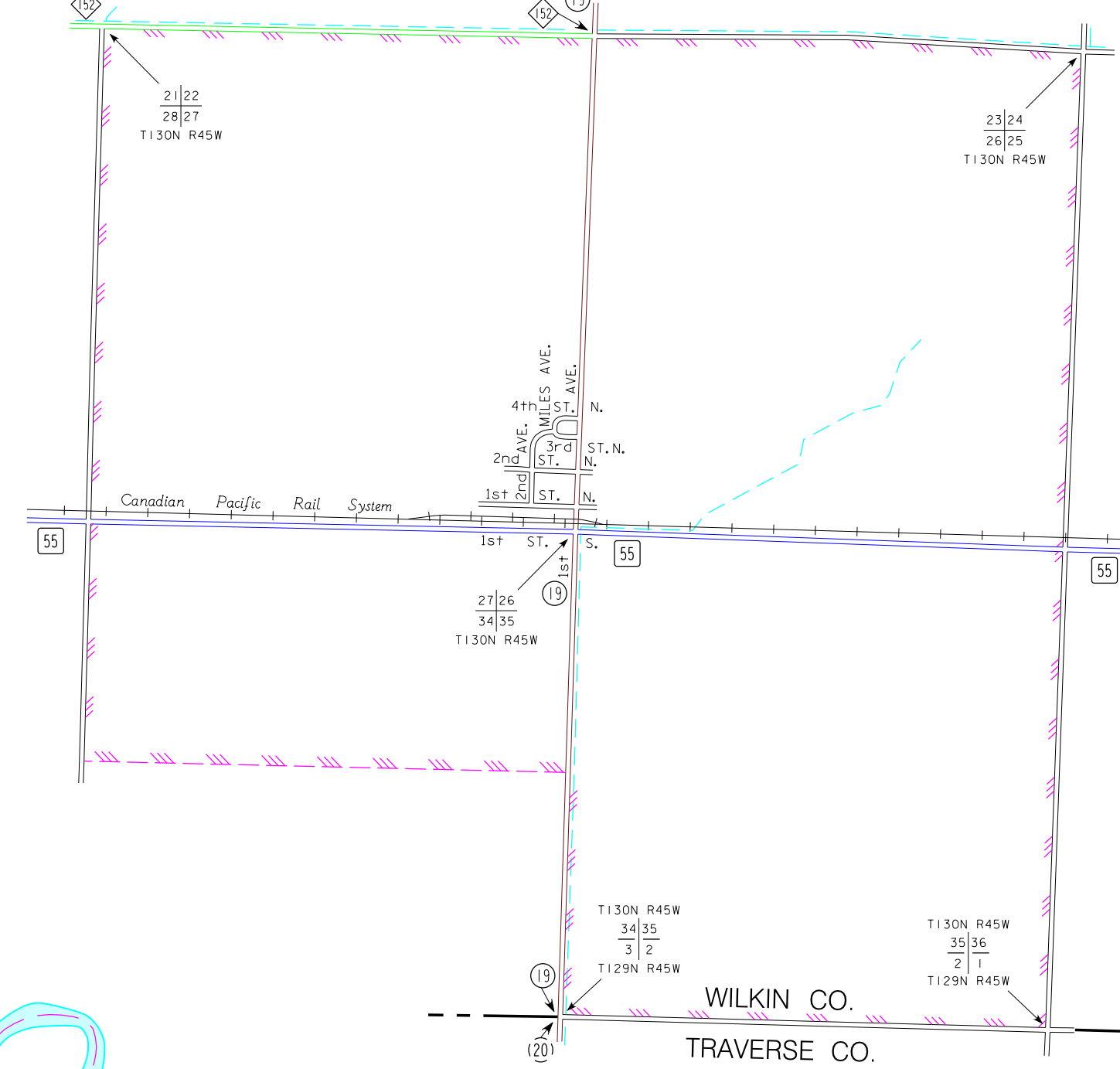
ROTHSAY WILKIN AND OTTERTAIL COUNTIES

POP. 493



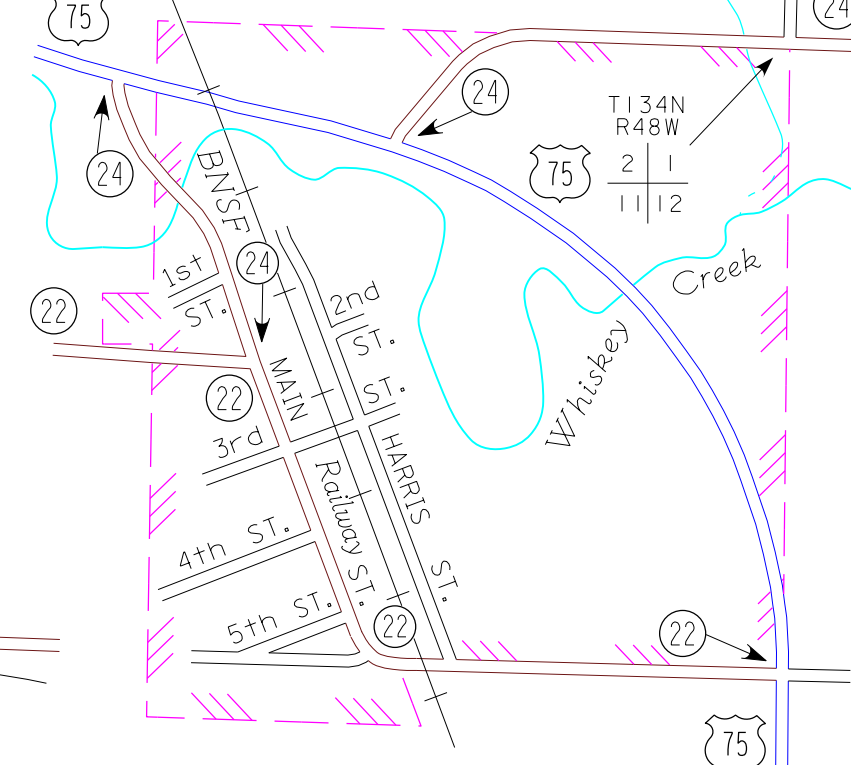
NASHUA WILKIN COUNTY

POP. 68
Scale: 1" = 1600'



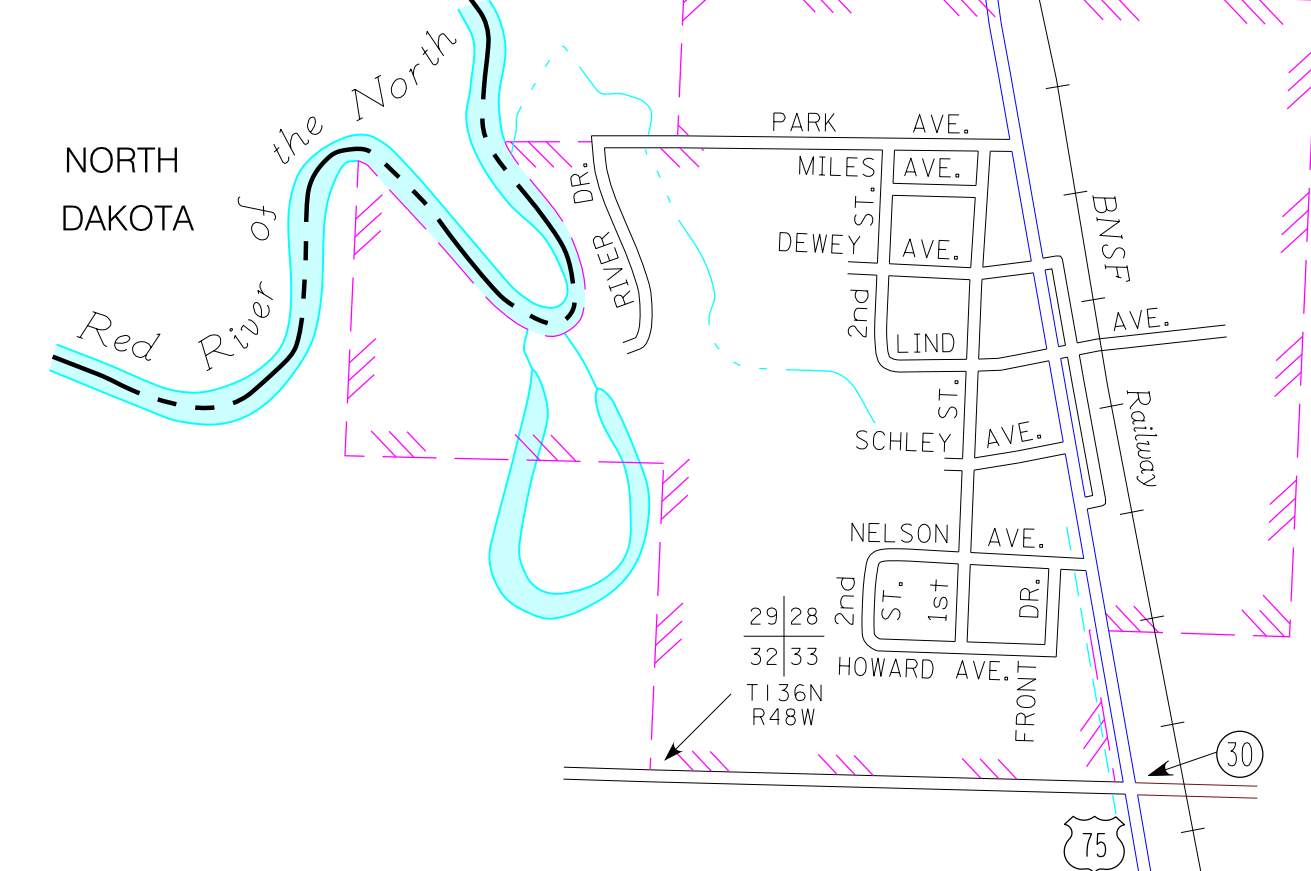
KENT WILKIN COUNTY

POP. 81



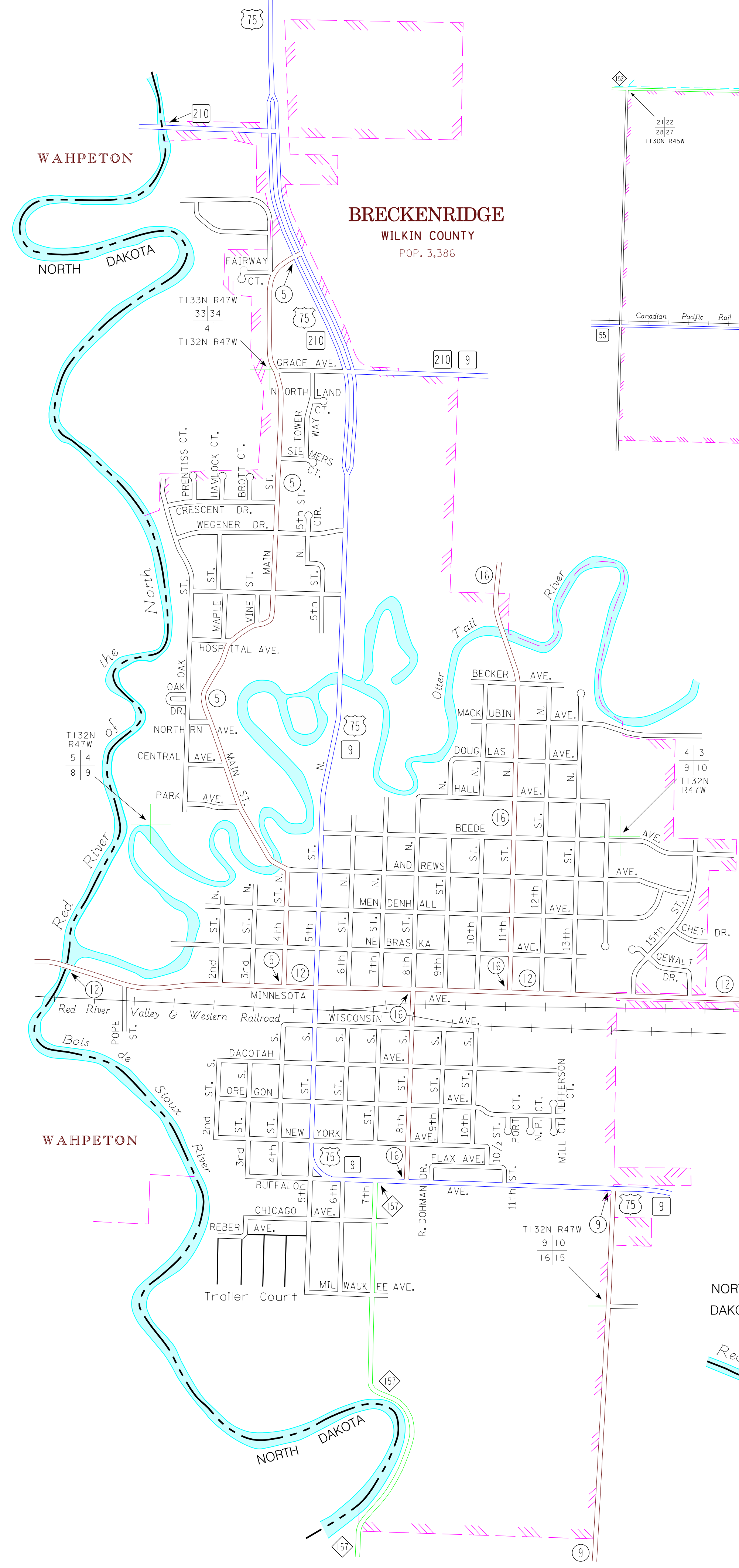
WOLVERTON WILKIN COUNTY

POP. 142



BRECKENRIDGE WILKIN COUNTY

POP. 3,386



MUNICIPALITIES SHOWN ON THIS SHEET

- BRECKENRIDGE
- CAMPBELL
- DORAN
- FOXHOME
- KENT
- NASHUA
- ROTHSAY
- WOLVERTON

To request information from this document in an alternative format, call 651-366-4718 or 1-800-657-3774 (Greater Minnesota); 711 or 1-800-627-3529 (Minnesota Relay). You may also send an e-mail to: ADRequest.dta@state.mn.us (Please request at least one week in advance).

*Note: NASHUA shown at 1" = 1600'

NOTE: 2010 U.S. CENSUS FIGURES SHOWN FOR ALL MUNICIPALITIES UNLESS OTHERWISE STATED.