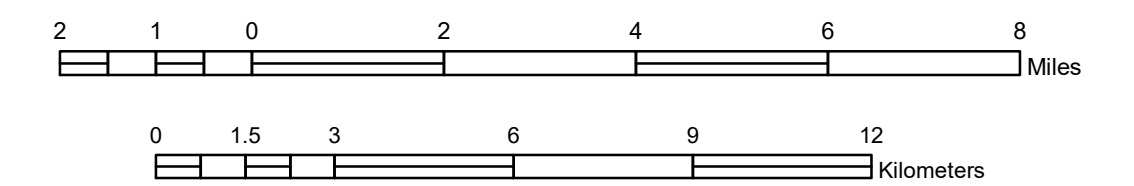


# GENERAL HIGHWAY MAP LYON COUNTY MINNESOTA

PREPARED BY THE  
MINNESOTA DEPARTMENT OF TRANSPORTATION  
OFFICE OF TRANSPORTATION SYSTEM MANAGEMENT  
IN COOPERATION WITH  
U.S. DEPARTMENT OF TRANSPORTATION  
FEDERAL HIGHWAY ADMINISTRATION

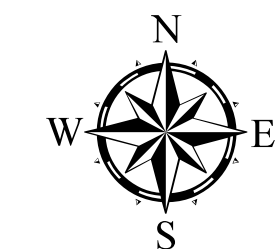
SCALE



1 in = 2 miles

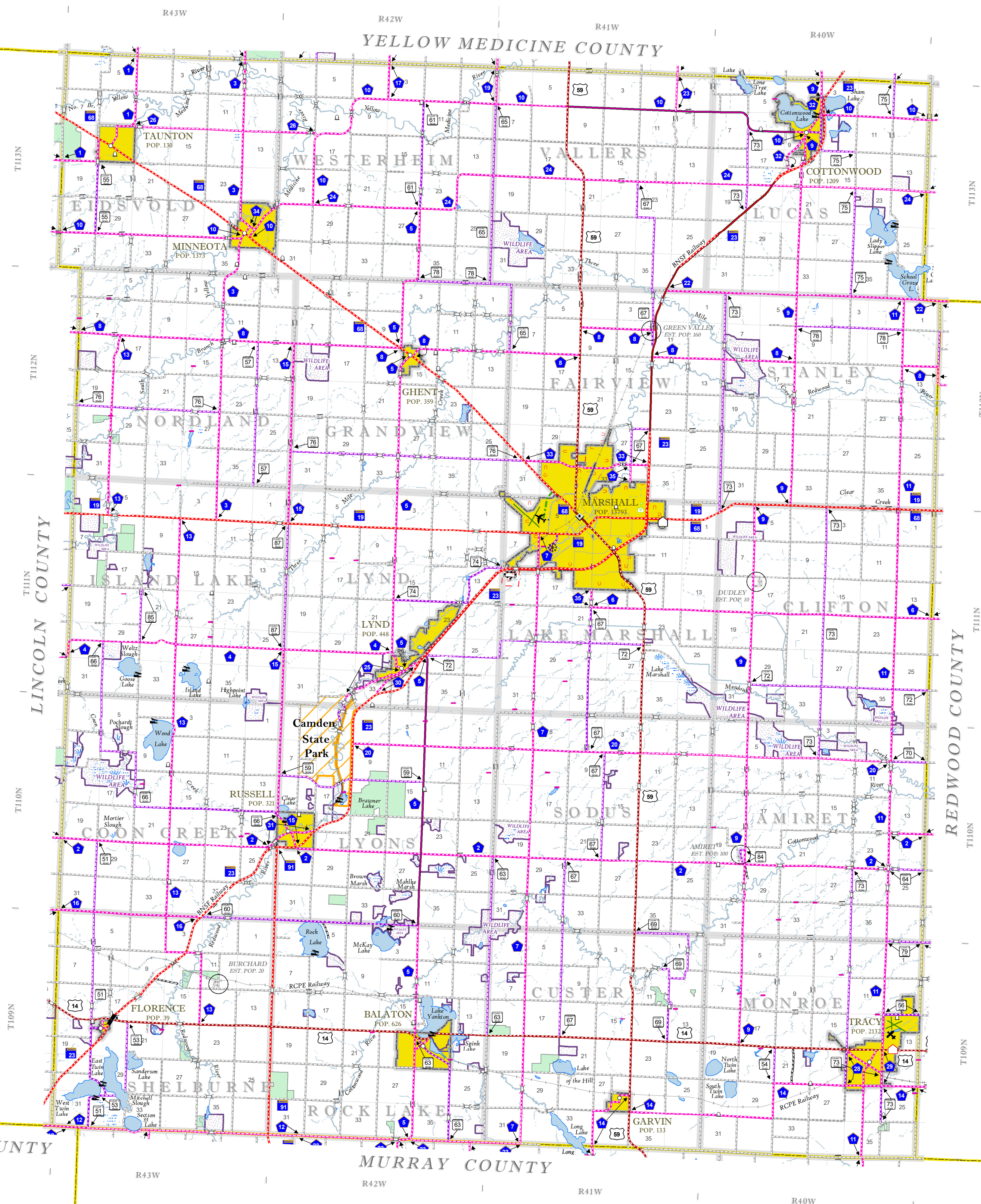
2023

Projection:  
Transverse Mercator  
NAD 1986  
UTM Zone 15

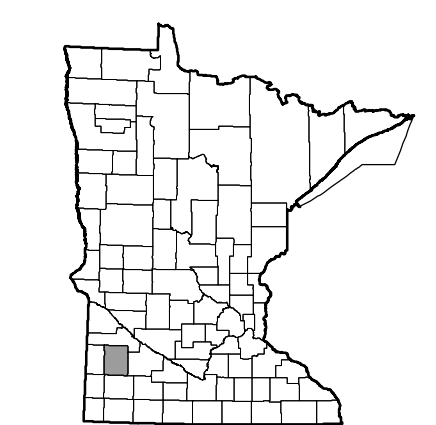


North American Datum  
of 1986

ROAD AND ROADWAY FEATURES	
INTERSTATE	CONCRETE
US HIGHWAY	BITUMINOUS
STATE AID HIGHWAY	GRAVEL
COUNTY ROAD	DIRT/UNIMPROVED
TOWNSHIP ROAD	UNKNOWN
UNORGANIZED TERRITORY ROAD	PROPOSED
PRIVATE ROAD	RAMP OR CONNECTOR
OTHER ROADS:	INTERSTATE EXT.
Municipal	GREAT RIVER ROAD
Military	
National Park	
National Monument	
National Forest	
National Wildlife Refuge	
State Park	
State Forest	
State Game	
RAILROAD AND RAILWAY FEATURES	
EMPIRE BUILDER STATION (AMTRAK)	
NORTHSTAR STATION (COMMUTER)	
INFRASTRUCTURE FEATURES	
LONG BRIDGE (100' or Greater Span)	
MAJOR BRIDGE (20' to 100' Span)	
MINOR BRIDGE (5' to 20' Span)	
DAM	
LOCK AND DAM	
CITY CENTERS	
STATE CAPITAL	
COUNTY BEAT	
CITY CENTER	
TOWNSHIP COMMUNITY	
PUBLIC SERVICE FEATURES	
MINOT OFFICE	
MINOT TRUCK STATION	
HIGHWAY PATROL DISTRICT OFFICE	
STATE TRAVEL INFORMATION CENTER	
REST AREA (Full Service)	
REST AREA (Vault Toilet)	
WAYSIDE (Vault or Pit Toilet)	
PARK AND RIDE LOT	
PORT OF ENTRY	
PUBLIC ACCESS POINT	
PUBLIC UNIVERSITY AND COLLEGE	
PRIVATE UNIVERSITY AND COLLEGE	
FARMLANDS	
CULTURAL FEATURES	
STATE HISTORICAL MARKER	
HISTORIC DISTRICT	
HISTORIC SITE	
MONUMENT	
CEMETERY	
AVIATION FEATURES	
COMMERCIAL AIRPORT (Complete Facilities)	
GENERAL AIRPORT (Limited Facilities)	
ARSTRIP (No Facilities)	
SEAPLANE	
AIRPORT RUNWAY	
BOUNDARY FEATURES	
TRIBAL LAND	
STATE OF MINNESOTA	
COUNTY	
MUNICIPALITY	
UNORGANIZED TERRITORY	
FEDERAL ADJUSTED URBAN AREA (2014)	
CIVIL TOWNSHIP	
CONGRESSIONAL TOWNSHIP	
SECTION	
MILITARY	
VOYAGEURS NATIONAL PARK	
BOUNDARY WATERS CANOE AREA WILDERNESS	
STATE PARK	
REGIONAL PARK	
NATIONAL FOREST	
NATIONAL AND STATE FOREST	
STATE FOREST	
NATIONAL TRAIL	
WILDLIFE REFUGE AREA	
WILDLIFE MANAGEMENT AREA	
HYDROLOGIC FEATURES	
LAKE, POND OR RESERVOIR	
RIVER OR STREAM (Perennial)	
STREAM (Intermittent)	
DRAINAGE DITCH	
WETLAND	
ISLAND OR LAND	
REGIONAL WATERSHED	

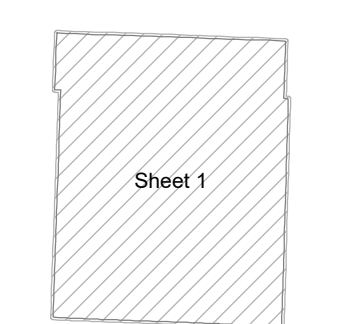


Outline Map of Minnesota showing location of the County within the state.



Outline Map of the County.

Area of this County 722.01 Sq. Miles  
Land Area 714.56 Sq. Miles  
2020 Total County Population 25269



LAST EDITED ON 1-02-2024

SHEET 1 OF 1

To request information from this document in an alternative format, call 651-366-4718 or 1-800-657-3774 (Greater Minnesota); 711 or 1-800-627-3529 (Minnesota Relay). You may also send an e-mail to ADRequest.dot@state.mn.us. (Please request at least one week in advance.)

NOTE: FOR DETAIL OF COUNTY STATE AID HIGHWAYS AND COUNTY ROADS IN INCORPORATED PLACE, SEE MAPS OF MUNICIPALITIES.