

# GENERAL HIGHWAY MAP SAINT LOUIS COUNTY MINNESOTA

PREPARED BY THE  
MINNESOTA DEPARTMENT OF TRANSPORTATION  
OFFICE OF TRANSPORTATION SYSTEM MANAGEMENT  
IN COOPERATION WITH  
U.S. DEPARTMENT OF TRANSPORTATION  
FEDERAL HIGHWAY ADMINISTRATION

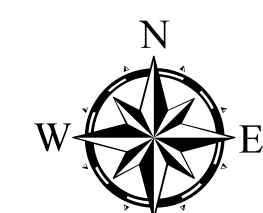
SCALE



1 in = 2 miles

2022

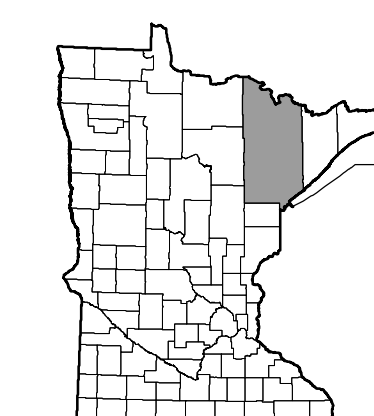
Projection:  
Transverse Mercator  
NAD 1986  
UTM Zone 15



North American Datum  
of 1986

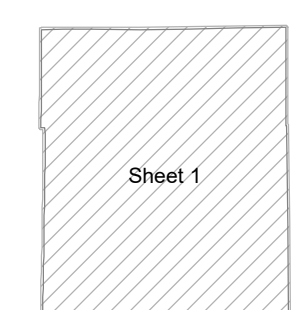
ROAD AND ROADWAY FEATURES	
INTERSTATE	CONCRETE
US HIGHWAY	BITUMINOUS
MINI HIGHWAY	GRAVEL
COUNTY STATE AID HIGHWAY	DIRT/UNIMPROVED
COUNTY ROAD	UNKNOWN
TRIAL ROAD	PROPOSED
TOWNSHIP ROAD	RAMP OR CONNECTOR
UNORGANIZED TERRITORY ROAD	INTERSTATE EXT.
PRIVATE ROAD	GREAT RIVER ROAD
OTHER ROADS:	
MUNICIPAL	
Military	National Forest
National Park	State Park
National Wildlife Refuge	State Game
RAILROAD AND RAILWAY FEATURES	
EMPIRE BUILDER STATION (AMTRAK)	
NORTHSTAR STATION (COMMUTER)	
INFRASTRUCTURE FEATURES	
LONG BRIDGE (100' OR GREATER SPAN)	
MAJOR BRIDGE (20' TO 100' SPAN)	
MINOR BRIDGE (5' TO 20' SPAN)	
DAM	
LOCK AND DAM	
CITY CENTERS	
STATE CAPITAL	COUNTY BEAT
CITY CENTER	TOWNSHIP COMMUNITY
PUBLIC SERVICE FEATURES	
MINOT OFFICE	
MINOT TRUCK STATION	
HIGHWAY PATROL DISTRICT OFFICE	
STATE TRAVEL INFORMATION CENTER	
REST AREA (FULL SERVICE)	
REST AREA (VAULT TOILET)	
WAYSIDE (VAULT OR PVI TOILET)	
PARK AND RIDE LOT	
PORT OF ENTRY	
PUBLIC ACCESS POINT	
PUBLIC UNIVERSITY AND COLLEGE	
PRIVATE UNIVERSITY AND COLLEGE	
FARMGROUNDS	
CULTURAL FEATURES	
STATE HISTORICAL MARKER	
HISTORIC DISTRICT	
HISTORIC SITE	
MONUMENT	
CEMETERY	
AVIATION FEATURES	
COMMERCIAL AIRPORT (COMPLETE FACILITIES)	
GENERAL AIRPORT (LIMITED FACILITIES)	
ARSTRIP (NO FACILITIES)	
SEAPLANE	
AIRPORT RUNWAY	
BOUNDARY FEATURES	
TRIBAL LAND	
STATE OF MINNESOTA	
COUNTY	
MUNICIPALITY	
UNORGANIZED TERRITORY	
FEDERAL ADJUSTED URBAN AREA (2014)	
CIVIL TOWNSHIP	
CONGRESSIONAL TOWNSHIP	
SECTION	
MILITARY	
VOYAGEURS NATIONAL PARK	
BOUNDARY WATERS CANOE AREA WILDERNESS	
STATE PARK	
REGIONAL PARK	
NATIONAL FOREST	
NATIONAL AND STATE FOREST	
STATE FOREST	
NATIONAL TRAIL	
WILDLIFE REFUGE AREA	
WILDLIFE MANAGEMENT AREA	
HYDROLOGIC FEATURES	
LAKE, POND OR RESERVOIR	
RIVER OR STREAM (PERMANENT)	
STREAM (INTERMITTENT)	
DRAINAGE DITCH	
WETLAND	
ISLAND OR LAND	
REGIONAL WATERSHED	

Outline Map of Minnesota showing location of the County within the state.



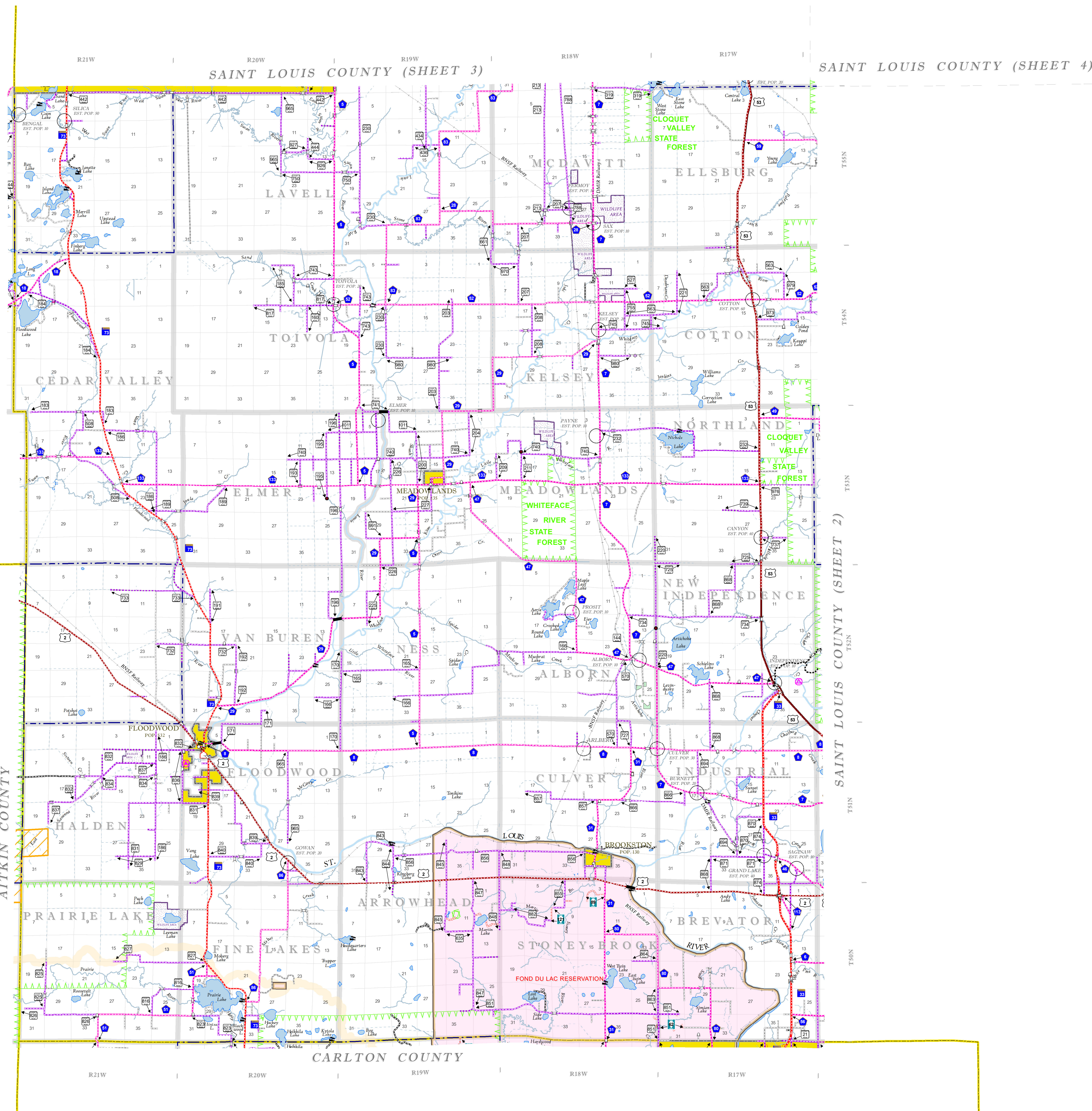
Outline Map of the County.

Area of this County 6,737.86 Sq. Miles  
Land Area 6,247.4 Sq. Miles  
2020 Total County Population 200231



LAST EDITED ON 1-07-2023

SHEET 1 OF 7



To request information from this document in an alternative format, call 651-366-4718 or 1-800-657-3774 (Greater Minnesota); 711 or 1-800-627-3529 (Minnesota Relay). You may also send an e-mail to ADRequest.dot@state.mn.us. (Please request at least one week in advance.)

NOTE: FOR DETAIL OF COUNTY STATE AID HIGHWAYS AND COUNTY ROADS IN INCORPORATED PLACE, SEE MAPS OF MUNICIPALITIES.